

À des fins de recherche uniquement

Anticorps Polyclonal de lapin anti-CCT2



Numéro de catalogue: 24896-1-AP

Phare

5 Publications

Informations de base

Numéro de catalogue: 24896-1-AP	Numéro d'acquisition GenBank: BC113516	Méthode de purification: Purification par affinité contre l'antigène
Taille: 150ul, Concentration: 700 µg/ml by Nanodrop and 473 µg/ml by Bradford method using BSA as the standard;	Identification du gène (NCBI): 10576	Dilutions recommandées: WB 1:500-1:2000 IF 1:20-1:200
Hôte: Lapin	Nom complet: chaperonin containing TCP1, subunit 2 (beta)	
Isotype: IgG	MW calculé: 535 aa, 57 kDa	
Immunogen Catalog Number: AG19264	MW observés: 50-58 kDa	

Applications

Applications testées: IF, WB, ELISA	Contrôles positifs: WB : tissu testiculaire de souris, cellules Jurkat, cellules NIH/3T3 IF : cellules NIH/3T3,
Demandes citées: IF, WB	
Spécificité de l'espèce: Humain, souris	
Espèces citées: Humain, souris	

Informations générales

CCT2 is a gene encoding a molecular chaperone that is a member of the chaperonin containing TCP1 complex (CCT), also known as the TCP1 ring complex (TRiC). The switch of CCT2's role from a chaperonin to a specific aggregophagy receptor is achieved by CCT2 monomer formation. CCT2 functions independently of ubiquitin and the TRiC complex to facilitate the autophagic clearance of solid protein aggregates. CCT2 has 2 isoforms with the molecular mass of 53 and 57 kDa. (PMID: 35699934)

Publications notables

Autrice	Pubmed ID	Journal	Application
Jiale Zhu	35513225	Pharmacol Res	WB
Yu-Cheng Zhang	33475699	J Cell Biol	WB, IF
Boyuan Ma	37321990	Signal Transduct Target Ther	IF

Stockage

Stockage:
Stocker à -20°C. Stable pendant un an après l'expédition.
Tampon de stockage:
PBS avec azoture de sodium à 0,02 % et glycérol à 50 % pH 7,3
L'aliquotage n'est pas nécessaire pour le stockage à -20C

*** Les 20ul contiennent 0,1% de BSA.

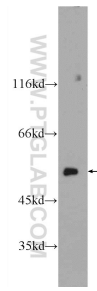
For technical support and original validation data for this product please contact:

T: 1 (888) 4PTGLAB (1-888-478-4522) (toll free in USA), or 1(312) 455-8498 (outside USA)

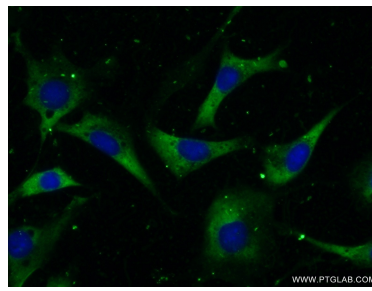
E: proteintech@ptglab.com
W: ptglab.com

This product is exclusively available under Proteintech Group brand and is not available to purchase from any other manufacturer.

Données de validation sélectionnées



mouse testis tissue were subjected to SDS PAGE followed by western blot with 24896-1-AP (CCT2 Antibody) at dilution of 1:1000 incubated at room temperature for 1.5 hours.



Immunofluorescent analysis of (-20°C Ethanol) fixed NIH/3T3 cells using 24896-1-AP (CCT2 antibody) at dilution of 1:50 and Alexa Fluor 488-conjugated AffiniPure Goat Anti-Rabbit IgG(H+L).