

À des fins de recherche uniquement

Anticorps Polyclonal de lapin anti-GRAMD1B



Numéro de catalogue: 24905-1-AP

2 Publications

Informations de base

Numéro de catalogue: 24905-1-AP	Numéro d'acquisition GenBank: BC107480	Méthode de purification: Purification par affinité contre l'antigène
Taille: 150ul , Concentration: 850 µg/ml by Nanodrop;	Identification du gène (NCBI): 57476	Dilutions recommandées: WB 1:500-1:2000 IHC 1:50-1:500 IF 1:20-1:200
Hôte: Lapin	Nom complet: GRAM domain containing 1B	
Isotype: IgG	MW calculé 738 aa, 85 kDa	
Immunogen Catalog Number: AG20670	MW observés: 85 kDa	

Applications

Applications testées: FC, IF, IHC, WB, ELISA	Contrôles positifs: WB : cellules A549, IHC : tissu de cancer du foie humain, IF : cellules A549,
Demandes citées: IF, WB	
Spécificité de l'espèce: Humain, souris	
Espèces citées: Humain, souris	

Remarque-IHC: il est suggéré de démasquer l'antigène avec un tampon de TE buffer pH 9,0; (*) À défaut, 'le démasquage de l'antigène peut être effectué avec un tampon citrate pH 6,0.

Informations générales

GRAMD1B, also named as KIAA1201, contains a transmembrane region and two domains of known function; the GRAM domain and a VAS domain. It is predicted to localize in the nucleus, supported by several nuclear transport signals and nuclear associated motifs. This highly conserved gene is found in a variety of vertebrates and invertebrates, however, it is not found in bacteria or fungi. There're some isoforms with MW 50 kDa and 81-87 kDa. With phosphor modification, it's about 90-110 kDa in WB detection.

Publications notables

Autrice	Pubmed ID	Journal	Application
John-Paul Andersen	32738348	Mol Metab	WB
Sepalika Bandara	37030626	J Lipid Res	WB,IF

Stockage

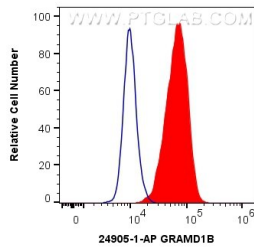
Stockage:
Stocker à -20°C. Stable pendant un an après l'expédition.
Tampon de stockage:
PBS avec azoture de sodium à 0,02 % et glycérol à 50 % pH 7,3
L'aliquotage n'est pas nécessaire pour le stockage à -20C

*** Les 20ul contiennent 0,1% de BSA.

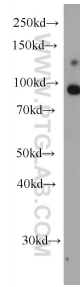
For technical support and original validation data for this product please contact:
T: 1 (888) 4PTGLAB (1-888-478-4522) (toll free in USA), or 1(312) 455-8498 (outside USA)
E: proteintech@ptglab.com
W: ptglab.com

This product is exclusively available under Proteintech Group brand and is not available to purchase from any other manufacturer.

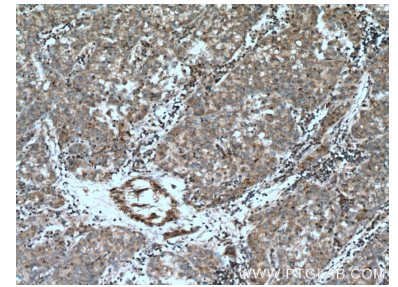
Données de validation sélectionnées



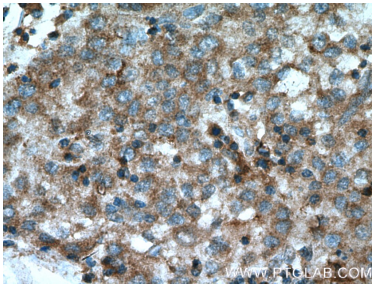
1X10⁶ A549 cells were intracellularly stained with 0.5 ug Anti-Human GRAMD1B (24905-1-AP) and CoraLite@488-Conjugated AffiniPure Goat Anti-Rabbit IgG(H+L) at dilution 1:1000 (red), or 0.5 ug Control Antibody. Cells were fixed with 4% PFA and permeabilized with Flow Cytometry Perm Buffer (PF00011-C).



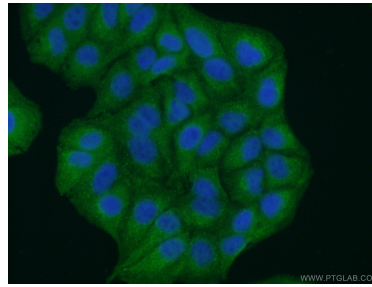
A549 cells were subjected to SDS PAGE followed by western blot with 24905-1-AP (GRAMD1B Antibody) at dilution of 1:1000 incubated at room temperature for 1.5 hours.



Immunohistochemical analysis of paraffin-embedded human liver cancer tissue slide using 24905-1-AP (GRAMD1B Antibody) at dilution of 1:200 (under 10x lens). Heat mediated antigen retrieval with Tris-EDTA buffer (pH 9.0).



Immunohistochemical analysis of paraffin-embedded human liver cancer tissue slide using 24905-1-AP (GRAMD1B Antibody) at dilution of 1:200 (under 40x lens). Heat mediated antigen retrieval with Tris-EDTA buffer (pH 9.0).



Immunofluorescent analysis of (10% Formaldehyde) fixed A549 cells using 24905-1-AP (GRAMD1B antibody) at dilution of 1:50 and Alexa Fluor 488-conjugated AffiniPure Goat Anti-Rabbit IgG(H+L).