

À des fins de recherche uniquement

Anticorps Polyclonal de lapin anti-ILK



Numéro de catalogue: 24926-1-AP

1 Publications

Informations de base

Numéro de catalogue: 24926-1-AP	Numéro d'acquisition GenBank: BC001554	Méthode de purification: Purification par affinité contre l'antigène
Taille: 150ul , Concentration: 500 µg/ml by Nanodrop and 267 µg/ml by Bradford method using BSA as the standard;	Identification du gène (NCBI): 3611	Dilutions recommandées: WB 1:500-1:2000 IHC 1:50-1:500 IF 1:20-1:200
Hôte: Lapin	Nom complet: integrin-linked kinase	
Isotype: IgG	MW calculé: 451 aa, 59 kDa	
Immunogen Catalog Number: AG21494	MW observés: 51 kDa	

Applications

Applications testées: IF, IHC, WB, ELISA	Contrôles positifs: WB : tissu cardiaque de souris, cellules MCF-7 IHC : tissu de cancer du pancréas humain, IF : cellules MCF-7,
Demandes citées: IHC	
Spécificité de l'espèce: Humain, souris	
Espèces citées: souris	
Remarque-IHC: il est suggéré de démasquer l'antigène avec un tampon de TE buffer pH 9,0; (*) A défaut, 'le démasquage de l'antigène peut être 'effectué avec un tampon citrate pH 6,0.	

Informations générales

ILK(Integrin-linked protein kinase) is also named as p59, PAT-4, DKFZp686F1765, ILK-1, ILK-2, ILK1, ILK2, p59ILK and belongs to the TKL Ser/Thr protein kinase family. This protein localizes to multiple sites, including the cytoplasm, and imports into the nucleus through sequences in its N-terminus, via active transport mechanisms that involve nuclear pore complexes(PMID: 18635968). ILK performs crucial roles in the control of intestinal cell and crypt-villus axis homeostasis-especially with regard to basement membrane fibronectin deposition-as well as cell proliferation, spreading, and migration(PMID:19885839).

Publications notables

Autrice	Pubmed ID	Journal	Application
Menghong Xu	35289594	ACS Appl Mater Interfaces	IHC

Stockage

Stockage:
Stocker à -20°C. Stable pendant un an après l'expédition.
Tampon de stockage:
PBS avec azoture de sodium à 0,02 % et glycérol à 50 % pH 7,3
L'aliquotage n'est pas nécessaire pour le stockage à -20C

*** Les 20ul contiennent 0,1% de BSA.

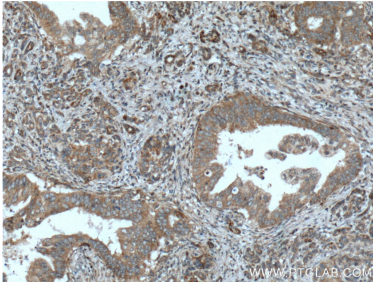
For technical support and original validation data for this product please contact:

T: 1 (888) 4PTGLAB (1-888-478-4522) (toll free in USA), or 1(312) 455-8498 (outside USA)

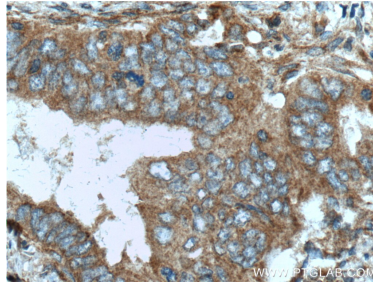
E: proteintech@ptglab.com
W: ptglab.com

This product is exclusively available under Proteintech Group brand and is not available to purchase from any other manufacturer.

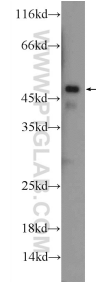
Données de validation sélectionnées



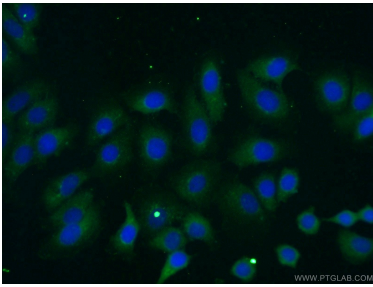
Immunohistochemical analysis of paraffin-embedded human pancreas cancer tissue slide using 24926-1-AP (ILK Antibody) at dilution of 1:200 (under 10x lens). Heat mediated antigen retrieval with Tris-EDTA buffer (pH 9.0).



Immunohistochemical analysis of paraffin-embedded human pancreas cancer tissue slide using 24926-1-AP (ILK Antibody) at dilution of 1:200 (under 40x lens). Heat mediated antigen retrieval with Tris-EDTA buffer (pH 9.0).



mouse heart tissue were subjected to SDS PAGE followed by western blot with 24926-1-AP (ILK Antibody) at dilution of 1:1000 incubated at room temperature for 1.5 hours.



Immunofluorescent analysis of (-20°C Ethanol) fixed MCF-7 cells using 24926-1-AP (ILK antibody) at dilution of 1:50 and Alexa Fluor 488-conjugated AffiniPure Goat Anti-Rabbit IgG(H+L).