

À des fins de recherche uniquement

Anticorps Polyclonal de lapin anti-ME2



Numéro de catalogue: 24944-1-AP

Phare

1 Publications

Informations de base

Numéro de catalogue:

24944-1-AP

Numéro d'acquisition GenBank:

BC000147

Méthode de purification:

Purification par affinité contre l'antigène

Taille:

150ul, Concentration: 1100 µg/ml by Nanodrop and 400 µg/ml by Bradford method using BSA as the standard;

Identification du gène (NCBI):

4200

Dilutions recommandées:

WB 1:2000-1:16000

IP 0.5-4.0 ug for IP and 1:500-1:1000 for WB

IHC 1:100-1:400

Hôte:

Lapin

Nom complet:

malic enzyme 2, NAD(+)-dependent, mitochondrial

MW calculé

65 kDa

MW observés:

54 kDa, 65 kDa

Isotype:

IgG

Immunogen Catalog Number:

AG20741

Applications

Applications testées:

IHC, IP, WB, ELISA

Contrôles positifs:

WB : cellules HL-60, cellules HeLa, cellules Jurkat, cellules K-562

IP : cellules HeLa,

IHC : tissu de cancer du pancréas humain, tissu de côlon humain

Demandes citées:

WB

Spécificité de l'espèce:

Humain

Espèces citées:

Humain

Remarque-IHC: il est suggéré de démasquer l'antigène avec un tampon de TE buffer pH 9,0; (*) A défaut, 'le démasquage de l'antigène peut être 'effectué avec un tampon citrate pH 6,0.

Informations générales

ME2(malic enzyme 2) is also named as NAD-ME and belongs to the malic enzymes family. ME1, ME2 are important for NADPH production, lipogenesis and glutamine metabolism, but ME2 has a more profound effect. ME2 is a genome-coded mitochondrial enzyme that converts malate to pyruvate and is involved in neuronal synthesis of the neurotransmitter γ -aminobutyric acid (GABA)(PMID:15532013). This protein has 2 isoforms produced by alternative splicing with the MW of 65 kDa and 54 kDa.

Publications notables

Autrice	Pubmed ID	Journal	Application
Linchong Sun	25793315	Cell Res	WB

Stockage

Stockage:

Stocker à -20°C. Stable pendant un an après l'expédition.

Tampon de stockage:

PBS avec azoture de sodium à 0,02 % et glycérol à 50 % pH 7,3

L'aliquotage n'est pas nécessaire pour le stockage à -20C

*** Les 20ul contiennent 0,1% de BSA.

For technical support and original validation data for this product please contact:

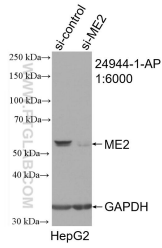
T: 1 (888) 4PTGLAB (1-888-478-4522) (toll free in USA), or 1(312) 455-8498 (outside USA)

E: proteintech@ptglab.com

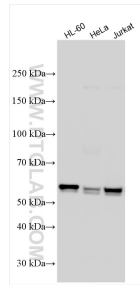
W: ptglab.com

This product is exclusively available under Proteintech Group brand and is not available to purchase from any other manufacturer.

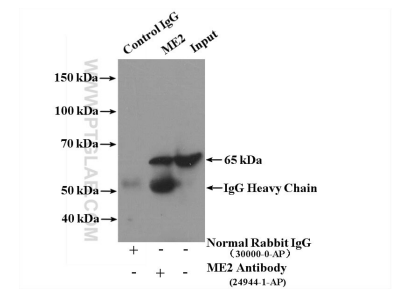
Données de validation sélectionnées



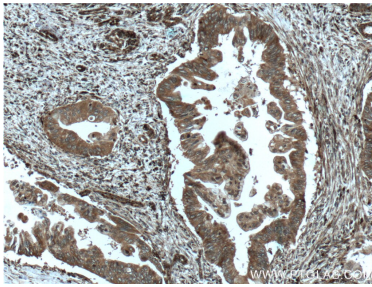
WB result of ME2 antibody (24944-1-AP; 1:6000; incubated at room temperature for 1.5 hours) with sh-Control and sh-ME2 transfected HepG2 cells.



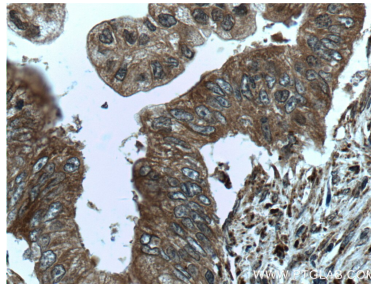
Various lysates were subjected to SDS PAGE followed by western blot with 24944-1-AP (ME2 antibody) at dilution of 1:8000 incubated at room temperature for 1.5 hours.



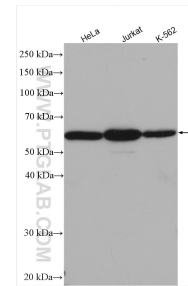
IP Result of anti-ME2 (IP:24944-1-AP, 4ug; Detection:24944-1-AP 1:500) with HeLa cells lysate 3200ug.



Immunohistochemical analysis of paraffin-embedded human pancreas cancer tissue slide using 24944-1-AP (ME2 Antibody) at dilution of 1:200 (under 10x lens). Heat mediated antigen retrieval with Tris-EDTA buffer (pH 9.0).



Immunohistochemical analysis of paraffin-embedded human pancreas cancer tissue slide using 24944-1-AP (ME2 Antibody) at dilution of 1:200 (under 40x lens). Heat mediated antigen retrieval with Tris-EDTA buffer (pH 9.0).



Various lysates were subjected to SDS PAGE followed by western blot with 24944-1-AP (ME2 antibody) at dilution of 1:3000 incubated at room temperature for 1.5 hours.