

À des fins de recherche uniquement

# Anticorps Polyclonal de lapin anti-GRIA1



Numéro de catalogue: 25012-1-AP

1 Publications

## Informations de base

|                           |   |                                |  |                          |   |
|---------------------------|---|--------------------------------|--|--------------------------|---|
| Numéro de catalogue:      | 25012-1-AP                                    | Numéro d'acquisition GenBank:  | BC111734                               | Méthode de purification: | Purification par affinité contre l'antigène |
| Taille:                   | 150ul , Concentration: 220 µg/ml by Nanodrop; | Identification du gène (NCBI): | 2890                                   | Dilutions recommandées:  | WB 1:500-1:2000<br>IHC 1:50-1:500           |
| Hôte:                     | Lapin   | Nom complet:                   | glutamate receptor, ionotropic, AMPA 1 |                          |   |
| Isotype:                  | IgG   | MW calculé                     | 906 aa, 102 kDa                        |                          |   |
| Immunogen Catalog Number: | AG21502                                       | MW observés:                   | 100 kDa                                |                          |   |

## Applications

### Applications testées:

IHC, WB, ELISA

### Demandes citées:

WB

### Spécificité de l'espèce:

Humain, rat, souris

### Espèces citées:

souris

**Remarque-IHC: il est suggéré de démasquer l'antigène avec un tampon de TE buffer pH 9,0; (\*) À défaut, le démasquage de l'antigène peut être effectué avec un tampon citrate pH 6,0.**

### Contrôles positifs:

WB : tissu de cervelet de souris, tissu de cervelet de rat

IHC : tissu cérébral humain, tissu cérébral de souris

## Informations générales

Glutamate receptors are the predominant excitatory neurotransmitter receptors in the mammalian brain and are activated in a variety of normal neurophysiologic processes. These receptors are heteromeric protein complexes with multiple subunits, each possessing transmembrane regions, and all arranged to form a ligand-gated ion channel. The classification of glutamate receptors is based on their activation by different pharmacologic agonists. This gene belongs to a family of alpha-amino-3-hydroxy-5-methyl-4-isoxazole propionate (AMPA) receptors.

## Publications notables

| Autrice    | Pubmed ID | Journal          | Application |
|------------|-----------|------------------|-------------|
| Baomei Xia | 33307051  | J Ethnopharmacol | WB          |

## Stockage

### Stockage:

Stocker à -20°C. Stable pendant un an après l'expédition.

### Tampon de stockage:

PBS avec azoture de sodium à 0,02 % et glycérol à 50 % pH 7,3

L'aliquotage n'est pas nécessaire pour le stockage à -20C

\*\*\* Les 20ul contiennent 0,1% de BSA.

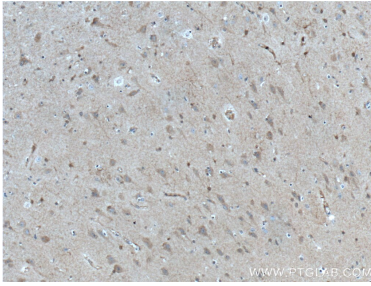
For technical support and original validation data for this product please contact:

T: 1 (888) 4PTGLAB (1-888-478-4522) (toll free in USA), or 1(312) 455-8498 (outside USA)

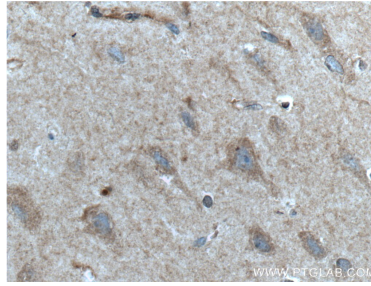
E: proteintech@ptglab.com  
W: ptglab.com

This product is exclusively available under Proteintech Group brand and is not available to purchase from any other manufacturer.

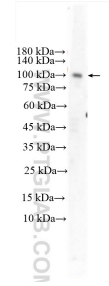
## Données de validation sélectionnées



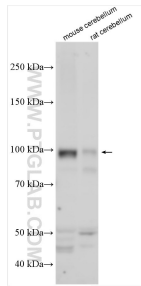
Immunohistochemical analysis of paraffin-embedded human brain tissue slide using 25012-1-AP (GRIA1 Antibody) at dilution of 1:200 (under 10x lens). Heat mediated antigen retrieval with Tris-EDTA buffer (pH 9.0).



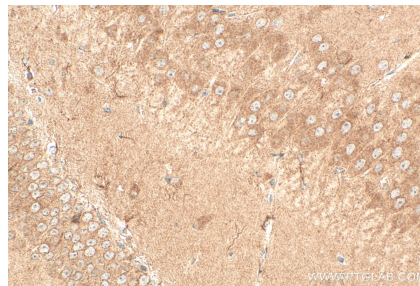
Immunohistochemical analysis of paraffin-embedded human brain tissue slide using 25012-1-AP (GRIA1 Antibody) at dilution of 1:200 (under 40x lens). Heat mediated antigen retrieval with Tris-EDTA buffer (pH 9.0).



mouse cerebellum tissue were subjected to SDS PAGE followed by western blot with 25012-1-AP (GRIA1 antibody) at dilution of 1:1000 incubated at room temperature for 1.5 hours.



Various lysates were subjected to SDS PAGE followed by western blot with 25012-1-AP (GRIA1 antibody) at dilution of 1:1000 incubated at room temperature for 1.5 hours.



Immunohistochemical analysis of paraffin-embedded mouse brain tissue slide using 25012-1-AP (GRIA1 antibody) at dilution of 1:200 (under 40x lens). Heat mediated antigen retrieval with Tris-EDTA buffer (pH 9.0).