

À des fins de recherche uniquement

Anticorps Polyclonal de lapin anti-NWD1



Numéro de catalogue: 25025-1-AP

1 Publications

Informations de base

Numéro de catalogue: 25025-1-AP	Numéro d'acquisition GenBank: BC117698	Méthode de purification: Purification par affinité contre l'antigène
Taille: 150ul , Concentration: 450 µg/ml by Nanodrop and 213 µg/ml by Bradford method using BSA as the standard;	Identification du gène (NCBI): 284434	Dilutions recommandées: WB 1:500-1:1000 IF 1:20-1:200
Hôte: Lapin	Nom complet: NACHT and WD repeat domain containing 1	
Isotype: IgG	MW calculé: 1564 aa, 175 kDa	
Immunogen Catalog Number: AG21754	MW observés: 77 kDa	

Applications

Applications testées: IF, WB, ELISA	Contrôles positifs: WB : cellules SH-SY5Y, cellules HepG2, tissu cérébral de souris IF : cellules HepG2,
Demandes citées: WB	
Spécificité de l'espèce: Humain, souris	
Espèces citées: Humain	

Informations générales

NWD1 also named as NWD1 Ens or NACHT and WD repeat domain containing 1 is a 1564 amino acid protein, which contains 1 NACHT domain and 13 WD repeat. The molecular weight of NWD1 was detected by western blot. The result shows that the molecular weight of NWD1 is 77 kDa., but NWD1 is a 174 kDa protein according to UniProt. The function of NWD1 is still non-known, meanwhile the molecular weight of NWD1 is still remained to be confirmed.

Publications notables

Autrice	Pubmed ID	Journal	Application
Qin Yang	31474551	EBioMedicine	WB

Stockage

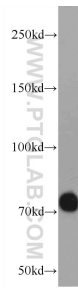
Stockage:
Stocker à -20°C. Stable pendant un an après l'expédition.
Tampon de stockage:
PBS avec azote de sodium à 0,02 % et glycérol à 50 % pH 7,3
L'aliquotage n'est pas nécessaire pour le stockage à -20C

*** Les 20ul contiennent 0,1% de BSA.

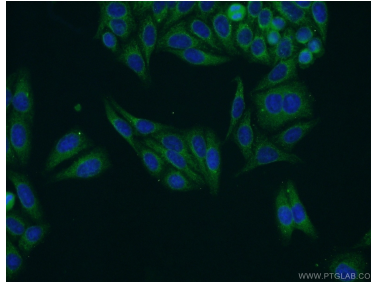
For technical support and original validation data for this product please contact:
T: 1 (888) 4PTGLAB (1-888-478-4522) (toll free in USA), or 1(312) 455-8498 (outside USA)
E: proteintech@ptglab.com
W: ptglab.com

This product is exclusively available under Proteintech Group brand and is not available to purchase from any other manufacturer.

Données de validation sélectionnées



SH-SY5Y cells were subjected to SDS PAGE followed by western blot with 25025-1-AP (NWD1 Antibody) at dilution of 1:600 incubated at room temperature for 1.5 hours.



Immunofluorescent analysis of HepG2 cells using 25025-1-AP (NWD1 antibody) at dilution of 1:50 and Alexa Fluor 488-conjugated AffiniPure Goat Anti-Rabbit IgG(H+L).