

À des fins de recherche uniquement

Anticorps Polyclonal de lapin anti-RELB



Numéro de catalogue: 25027-1-AP

6 Publications

Informations de base

Numéro de catalogue:

25027-1-AP

Taille:

150ul, Concentration: 700 µg/ml by Nanodrop;

Hôte:

Lapin

Isotype:

IgG

Immunogen Catalog Number:

AG13824

Numéro d'acquisition GenBank:

BC028013

Identification du gène (NCBI):

5971

Nom complet:

v-rel reticuloendotheliosis viral oncogene homolog B

MW calculé

62 kDa

MW observés:

62-65 kDa

Méthode de purification:

Purification par affinité contre l'antigène

Dilutions recommandées:

WB 1:1000-1:6000

IP 0.5-4.0 µg for IP and 1:200-1:1000 for WB

IHC 1:50-1:500

IF 1:200-1:800

Applications

Applications testées:

FC, IF, IHC, IP, WB, ELISA

Demandes citées:

FC, IF, IHC, WB

Spécificité de l'espèce:

Humain, souris

Espèces citées:

Humain

Contrôles positifs:

WB : cellules Raji, cellules Ramos, tissu de thymus de souris

IP : cellules Raji,

IHC : tissu de cancer du côlon humain, tissu de lymphome humain

IF : cellules HeLa, cellules U2OS

Remarque-IHC: il est suggéré de démasquer l'antigène avec un tampon de TE buffer pH 9,0; (*) À défaut, le démasquage de l'antigène peut être effectué avec un tampon citrate pH 6,0.

Informations générales

RELB, also named as Transcription factor RelB, is a 579 amino acid protein, which contains one RHD domain. RELB localizes in the nucleus and cytoplasm. RELB is a pleiotropic transcription factor which is present in almost all cell types and is involved in many biological processes such as inflammation, immunity, differentiation, cell growth, tumorigenesis and apoptosis.

Publications notables

Autrice	Pubmed ID	Journal	Application
Xinhua Xiao	28906487	Cell Death Dis	WB
Li Chen	32492708	J Clin Endocrinol Metab	WB
Lu Jiang	26192917	Nat Genet	WB, IHC

Stockage

Stockage:

Stocker à -20°C. Stable pendant un an après l'expédition.

Tampon de stockage:

PBS avec azote de sodium à 0,02 % et glycérol à 50 % pH 7,3

L'aliquotage n'est pas nécessaire pour le stockage à -20C

*** Les 20ul contiennent 0,1% de BSA.

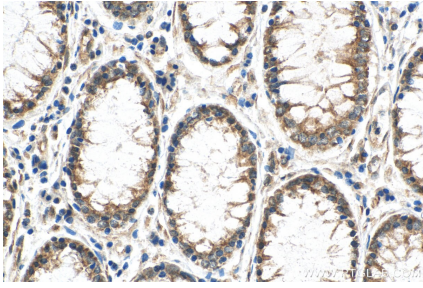
For technical support and original validation data for this product please contact:

T: 1 (888) 4PTGLAB (1-888-478-4522) (toll free in USA), or 1(312) 455-8498 (outside USA)

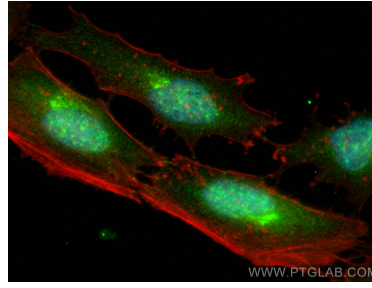
E: proteintech@ptglab.com
W: ptglab.com

This product is exclusively available under Proteintech Group brand and is not available to purchase from any other manufacturer.

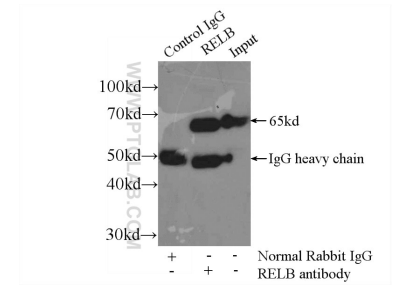
Données de validation sélectionnées



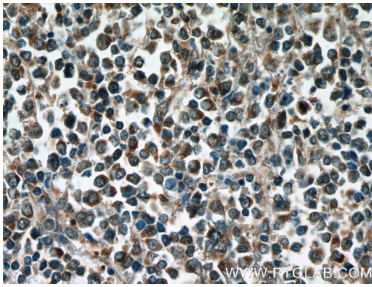
Immunohistochemical analysis of paraffin-embedded human colon cancer tissue slide using 25027-1-AP (RELB antibody) at dilution of 1:200 (under 40x lens). Heat mediated antigen retrieval with Tris-EDTA buffer (pH 9.0).



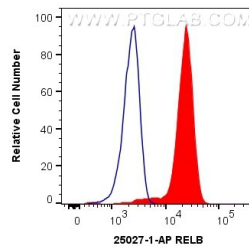
Immunofluorescent analysis of (4% PFA) fixed HeLa cells using RELB antibody (25027-1-AP) at dilution of 1:400 and CoraLite@488-Conjugated AffiniPure Goat Anti-Rabbit IgG(H+L), CL594-Phalloidin (red).



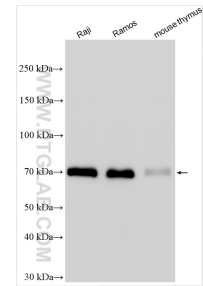
IP Result of anti-RELB (IP:25027-1-AP, 3ug; Detection:25027-1-AP 1:300) with Raji cells lysate 2500ug.



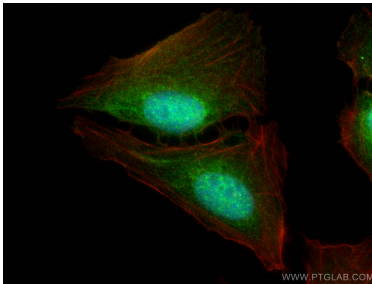
Immunohistochemical analysis of paraffin-embedded human lymphoma tissue slide using 25027-1-AP (RELB Antibody) at dilution of 1:50 (under 40x lens).



1×10^6 Jurkat cells were intracellularly stained with 0.5 ug Anti-Human RELB (25027-1-AP) and CoraLite@488-Conjugated AffiniPure Goat Anti-Rabbit IgG(H+L) at dilution 1:1000 (red), or 0.5 ug Rabbit IgG control Rabbit PolyAb (30000-0-AP, Clone:) (blue). Cells were fixed with 4% PFA and permeabilized with Flow Cytometry Perm Buffer (PF00011-C).



Various lysates were subjected to SDS PAGE followed by western blot with 25027-1-AP (RELB antibody) at dilution of 1:3000 incubated at room temperature for 1.5 hours.



Immunofluorescent analysis of (4% PFA) fixed U2OS cells using RELB antibody (25027-1-AP) at dilution of 1:400 and CoraLite@488-Conjugated AffiniPure Goat Anti-Rabbit IgG(H+L), CL594-Phalloidin (red).