

À des fins de recherche uniquement

Anticorps Polyclonal de lapin anti-NR1H4



Numéro de catalogue: 25055-1-AP

Phare

32 Publications

Informations de base

Numéro de catalogue:

25055-1-AP

Taille:

150ul, Concentration: 900 µg/ml by Nanodrop and 500 µg/ml by Bradford method using BSA as the standard;

Hôte:

Lapin

Isotype:

IgG

Immunogen Catalog Number:

AG21878

Numéro d'acquisition GenBank:

BC130573

Identification du gène (NCBI):

9971

Nom complet:

nuclear receptor subfamily 1, group H, member 4

MW calculé

486 aa, 56 kDa

MW observés:

48 kDa

Méthode de purification:

Purification par affinité contre l'antigène

Dilutions recommandées:

WB 1:1000-1:6000

IHC 1:50-1:500

Applications

Applications testées:

IHC, WB, ELISA

Demandes citées:

IF, IHC, WB

Spécificité de l'espèce:

Humain

Espèces citées:

Humain, porc, rat, souris

Remarque-IHC: il est suggéré de démasquer l'antigène avec un tampon de TE buffer pH 9,0; (*) A défaut, le démasquage de l'antigène peut être effectué avec un tampon citrate pH 6,0.

Contrôles positifs:

WB : cellules HepG2, cellules MCF-7, cellules MDA-MB-231

IHC : tissu rénal humain,

Informations générales

Nuclear Receptor subfamily 1, group H, member 4 (NR1H4, also known as FXR) is a receptor for bile acids and has an important role in regulating energy metabolism in liver, muscle and adipose tissues in humans and animals. NR1H4 is highly expressed in liver and has a role in lipid metabolism, whereas none of the other protein-coding genes in the region has known biological links with cholesterol, further supporting a role for NR1H4 in regulation of cholesterol levels. NR1H4 have four isoforms, i.e., FXRalpha1, FXRalpha2, FXRbeta1, and FXRbeta2, and each isoform has a different expressional level and transcriptional activity depending on its location within specific tissues. (PMID: 14733360, PMID: 30787420)

Publications notables

Autrice	Pubmed ID	Journal	Application
Tingting Li	32976922	Toxicol Appl Pharmacol	WB
Jiawei Wang	36273619	Eur J Pharmacol	WB
Yadi Zhong	36278209	Front Pharmacol	WB

Stockage

Stockage:

Stocker à -20°C. Stable pendant un an après l'expédition.

Tampon de stockage:

PBS avec azoture de sodium à 0,02 % et glycérol à 50 % pH 7,3

L'aliquotage n'est pas nécessaire pour le stockage à -20C

*** Les 20ul contiennent 0,1% de BSA.

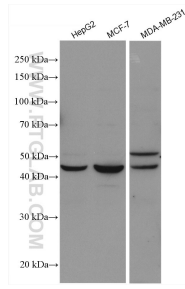
For technical support and original validation data for this product please contact:

T: 1 (888) 4PTGLAB (1-888-478-4522) (toll free in USA), or 1(312) 455-8498 (outside USA)

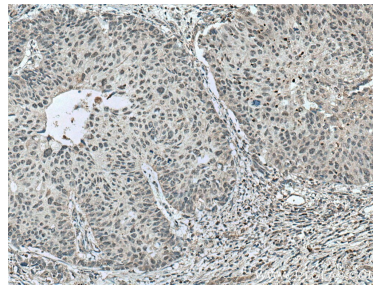
E: proteintech@ptglab.com
W: ptglab.com

This product is exclusively available under Proteintech Group brand and is not available to purchase from any other manufacturer.

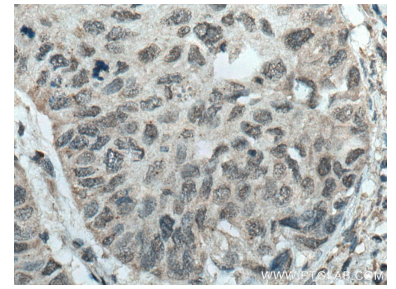
Données de validation sélectionnées



Various lysates were subjected to SDS PAGE followed by western blot with 25055-1-AP (NR1H4 antibody) at dilution of 1:3000 incubated at room temperature for 1.5 hours.



Immunohistochemical analysis of paraffin-embedded human kidney tissue slide using 25055-1-AP (NR1H4 antibody) at dilution of 1:200 (under 10x lens). Heat mediated antigen retrieval with Tris-EDTA buffer (pH 9.0).



Immunohistochemical analysis of paraffin-embedded human kidney tissue slide using 25055-1-AP (NR1H4 antibody) at dilution of 1:200 (under 40x lens). Heat mediated antigen retrieval with Tris-EDTA buffer (pH 9.0).