

À des fins de recherche uniquement

Anticorps Polyclonal de lapin anti-FEV



Numéro de catalogue: 25058-1-AP

1 Publications

Informations de base

Numéro de catalogue:

25058-1-AP

Numéro d'acquisition GenBank:

BC023511

Méthode de purification:

Purification par affinité contre l'antigène

Taille:

150ul, Concentration: 800 µg/ml by Nanodrop and 447 µg/ml by Bradford method using BSA as the standard;

Identification du gène (NCBI):

54738

Dilutions recommandées:

WB 1:500-1:2000

Hôte:

Lapin

Nom complet:

FEV (ETS oncogene family)

MW calculé

25 kDa

Isotype:

IgG

MW observés:

25 kDa

Immunogen Catalog Number:

AG20647

Applications

Applications testées:

WB, ELISA

Contrôles positifs:

WB : tissu cérébral humain fœtal, tissu cérébral de souris

Demandes citées:

IHC

Spécificité de l'espèce:

Humain, souris

Espèces citées:

souris

Informations générales

FEV belongs to the ETS transcription factor family. ETS family members have a highly conserved 85-amino acid ETS domain that binds purine-rich DNA sequences. The alanine-rich C-terminus of this gene indicates that it may act as a transcription repressor. This gene is exclusively expressed in neurons of the central serotonin (5-HT) system, a system implicated in the pathogeny of such psychiatric diseases as depression, anxiety, and eating disorders. In some types of Ewing tumors, this gene is fused to the Ewing sarcoma (EWS) gene following chromosome translocations.

Publications notables

Autrice	Pubmed ID	Journal	Application
Joshua E Burda	35614216	Nature	IHC

Stockage

Stockage:

Stocker à -20°C. Stable pendant un an après l'expédition.

Tampon de stockage:

PBS avec azoture de sodium à 0,02 % et glycérol à 50 % pH 7,3

L'aliquotage n'est pas nécessaire pour le stockage à -20C

*** Les 20ul contiennent 0,1% de BSA.

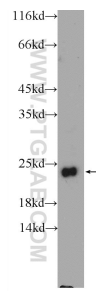
For technical support and original validation data for this product please contact:

T: 1 (888) 4PTGLAB (1-888-478-4522) (toll free in USA), or 1(312) 455-8498 (outside USA)

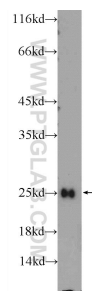
E: proteintech@ptglab.com
W: ptglab.com

This product is exclusively available under Proteintech Group brand and is not available to purchase from any other manufacturer.

Données de validation sélectionnées



fetal human brain tissue were subjected to SDS PAGE followed by western blot with 25058-1-AP (FEV Antibody) at dilution of 1:1000 incubated at room temperature for 1.5 hours.



mouse brain tissue were subjected to SDS PAGE followed by western blot with 25058-1-AP (FEV Antibody) at dilution of 1:1000 incubated at room temperature for 1.5 hours.