

À des fins de recherche uniquement

Anticorps Polyclonal de lapin anti-GPR107



Numéro de catalogue: 25076-1-AP

Phare

5 Publications

Informations de base

Numéro de catalogue:

25076-1-AP

Taille:

150ul, Concentration: 900 µg/ml by Nanodrop and 347 µg/ml by Bradford method using BSA as the standard;

Hôte:

Lapin

Isotype:

IgG

Immunogen Catalog Number:

AG18649

Numéro d'acquisition GenBank:

BC110518

Identification du gène (NCBI):

57720

Nom complet:

G protein-coupled receptor 107

MW calculé

552 aa, 67 kDa

MW observés:

60-67 kDa

Méthode de purification:

Purification par affinité contre l'antigène

Dilutions recommandées:

WB 1:500-1:1000

IF 1:10-1:100

Applications

Applications testées:

FC, IF, WB, ELISA

Demandes citées:

IF, IHC, WB

Spécificité de l'espèce:

Humain, souris

Espèces citées:

Humain, souris

Contrôles positifs:

WB : cellules HEK-293, tissu de cervelet de souris

IF : cellules HEK-293,

Informations générales

GPR107 also named as KIAA1624 or LUSTR1 is 600 amino acid protein, which belongs to the LU7TM family. GPR107 localizes in membrane and is a multi-pass membrane protein. GPR107 is a promising candidate receptor for neuronostatin, and neuronostatin, interacting with GPR107, may play an important role in the central control of cardiovascular function.

Publications notables

Autrice	Pubmed ID	Journal	Application
Yu-Shiuan Cheng	34799735	Nat Chem Biol	WB
Guanqun Huang	29925408	J Exp Clin Cancer Res	WB, IHC, IF
Shaobin Yang	30753874	Behav Brain Res	WB

Stockage

Stockage:

Stocker à -20°C. Stable pendant un an après l'expédition.

Tampon de stockage:

PBS avec azoture de sodium à 0,02 % et glycérol à 50 % pH 7,3

L'aliquotage n'est pas nécessaire pour le stockage à -20C

*** Les 20ul contiennent 0,1% de BSA.

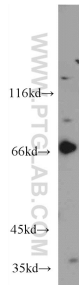
For technical support and original validation data for this product please contact:

T: 1 (888) 4PTGLAB (1-888-478-4522) (toll free in USA), or 1(312) 455-8498 (outside USA)

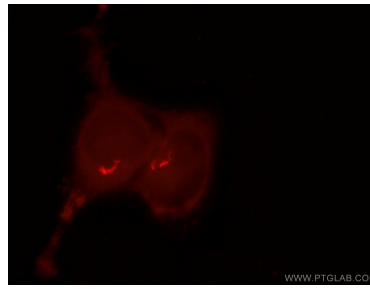
E: proteintech@ptglab.com
W: ptglab.com

This product is exclusively available under Proteintech Group brand and is not available to purchase from any other manufacturer.

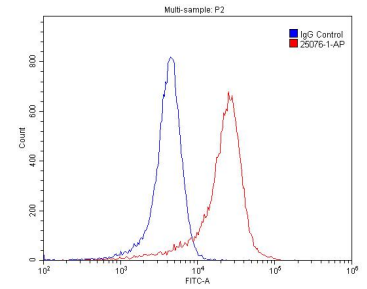
Données de validation sélectionnées



HEK-293 cells were subjected to SDS PAGE followed by western blot with 25076-1-AP (GPR107 Antibody) at dilution of 1:600 incubated at room temperature for 1.5 hours.



Immunofluorescent analysis of HEK-293 cells using 25076-1-AP (GPR107 antibody) at dilution of 1:25 and Rhodamine-Goat anti-Rabbit IgG.



1X10⁶ SH-SY5Y cells were stained with 0.2ug GPR107 antibody (25076-1-AP, red) and control antibody (blue). Alexa Fluor 488-conjugated AffiniPure Goat Anti-Rabbit IgG(H+L) with dilution 1:1500. Cells were fixed with 4% PFA and permeabilized with 0.1% Triton X-100.