

À des fins de recherche uniquement

# Anticorps Polyclonal de lapin anti-PGP



Numéro de catalogue: 25081-1-AP

5 Publications

## Informations de base

Numéro de catalogue:

25081-1-AP

Taille:

150ul, Concentration: 450 µg/ml by Nanodrop and 193 µg/ml by Bradford method using BSA as the standard;

Hôte:

Lapin

Isotype:

IgG

Immunogen Catalog Number:

AG18623

Numéro d'acquisition GenBank:

BC157035

Identification du gène (NCBI):

283871

Nom complet:

phosphoglycolate phosphatase

MW calculé

321 aa, 34 kDa

MW observés:

34 kDa

Méthode de purification:

Purification par affinité contre l'antigène

Dilutions recommandées:

WB 1:2000-1:10000

IP 0.5-4.0 ug for IP and 1:500-1:1000 for WB

IHC 1:20-1:200

IF 1:50-1:500

## Applications

Applications testées:

FC, IF, IHC, IP, WB, ELISA

Demandes citées:

IF, IHC, WB

Spécificité de l'espèce:

Humain, souris

Espèces citées:

Humain

Contrôles positifs:

WB : cellules HepG2, cellules K-562, cellules SH-SY5Y, cellules Y79, tissu cardiaque de souris

IP : cellules Y79,

IHC : tissu d'amygdalite humaine, tissu cardiaque humaine, tissu de muscle squelettique humaine

IF : cellules MCF-7,

**Remarque-IHC: il est suggéré de démasquer l'antigène avec un tampon de TE buffer pH 9,0; (\*) A défaut, 'le démasquage de l'antigène peut être effectué avec un tampon citrate pH 6,0.**

## Informations générales

PGP(phosphoglycolate phosphatase) belongs to the HAD-like hydrolase superfamily. It is an essential intermediate in the biosynthetic pathway of cardiolipin and a mitochondrial-specific phospholipid regulating the membrane integrity and activities of the organelle. PGP catalyzes the formation of phosphatidylglycerol from phosphatidylglycerophosphate.

## Publications notables

Autrice	Pubmed ID	Journal	Application
Changduo Wang	36369077	J Nanobiotechnology	WB,IF
Lingyun Zhang	34322485	Front Cell Dev Biol	IHC
Zhikun Yang	36645980	Eur J Med Chem	WB

## Stockage

Stockage:

Stocker à -20°C. Stable pendant un an après l'expédition.

Tampon de stockage:

PBS avec azoture de sodium à 0,02 % et glycérol à 50 % pH 7,3

L'aliquotage n'est pas nécessaire pour le stockage à -20C

\*\*\* Les 20ul contiennent 0,1% de BSA.

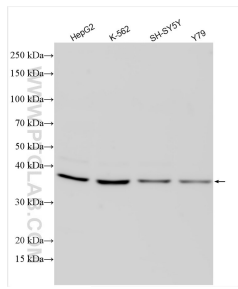
For technical support and original validation data for this product please contact:

T: 1 (888) 4PTGLAB (1-888-478-4522) (toll free in USA), or 1(312) 455-8498 (outside USA)

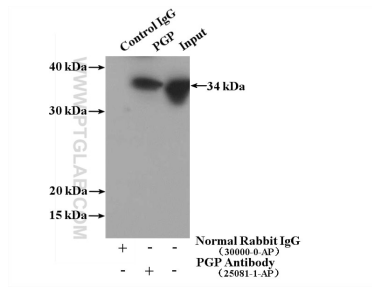
E: proteintech@ptglab.com  
W: ptglab.com

This product is exclusively available under Proteintech Group brand and is not available to purchase from any other manufacturer.

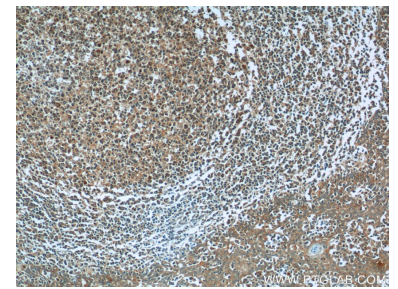
## Données de validation sélectionnées



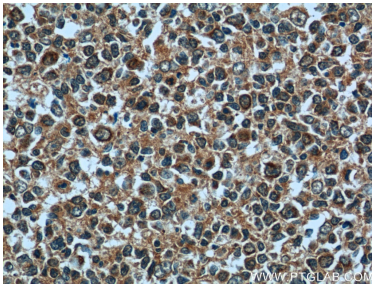
Various lysates were subjected to SDS PAGE followed by western blot with 25081-1-AP (PGP antibody) at dilution of 1:5000 incubated at room temperature for 1.5 hours.



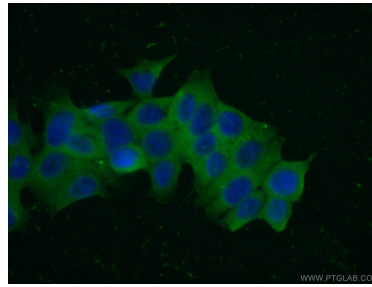
IP Result of anti-PGP (IP:25081-1-AP, 4ug; Detection:25081-1-AP 1:600) with Y79 cells lysate 1920ug.



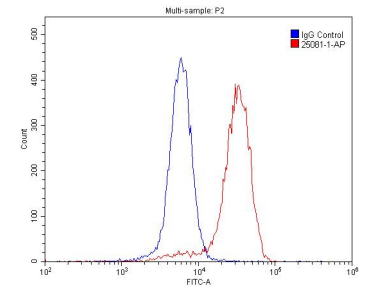
Immunohistochemical analysis of paraffin-embedded human tonsillitis tissue slide using 25081-1-AP (PGP Antibody) at dilution of 1:50 (under 10x lens).



Immunohistochemical analysis of paraffin-embedded human tonsillitis tissue slide using 25081-1-AP (PGP Antibody) at dilution of 1:50 (under 40x lens).



Immunofluorescent analysis of (-20°C Ethanol) fixed MCF-7 cells using 25081-1-AP (PGP antibody) at dilution of 1:50 and Alexa Fluor 488-conjugated AffiniPure Goat Anti-Rabbit IgG(H+L).



1X10<sup>6</sup> SH-SY5Y cells were stained with 0.2ug PGP antibody (25081-1-AP, red) and control antibody (blue). Alexa Fluor 488-conjugated AffiniPure Goat Anti-Rabbit IgG(H+L) with dilution 1:1500. Cells were fixed with 4% PFA and permeabilized with 0.1% Triton X-100.