

À des fins de recherche uniquement

# Anticorps Polyclonal de lapin anti-CLIP-115/CLIP2



Numéro de catalogue: 25088-1-AP **Phare**

## Informations de base

Numéro de catalogue:

25088-1-AP

Taille:

150ul, Concentration: 950 µg/ml by Nanodrop and 487 µg/ml by Bradford method using BSA as the standard;

Hôte:

Lapin

Isotype:

IgG

Immunogen Catalog Number:

AG18692

Numéro d'acquisition GenBank:

BC150332

Identification du gène (NCBI):

7461

Nom complet:

CAP-GLY domain containing linker protein 2

MW calculé

1011 aa, 112 kDa

MW observés:

110-120 kDa

Méthode de purification:

Purification par affinité contre l'antigène

Dilutions recommandées:

WB 1:5000-1:50000

IP 0.5-4.0 ug for IP and 1:500-1:2000 for WB

IHC 1:400-1:1600

## Applications

Applications testées:

IHC, IP, WB, ELISA

Spécificité de l'espèce:

Humain, rat, souris

**Remarque-IHC: il est suggéré de démasquer l'antigène avec un tampon de TE buffer pH 9.0; (\*) À défaut, le démasquage de l'antigène peut être effectué avec un tampon citrate pH 6.0.**

Contrôles positifs:

WB : cellules RAW 264.7, cellules A549, tissu cérébral de rat, tissu cérébral de souris, tissu de cervelet de rat, tissu de cervelet de souris

IP : tissu cérébral de souris,

IHC : tissu cérébral de souris,

## Informations générales

CLIP-2/CLIP-115 is a cytoplasmic linker protein (CLIP) that links membranous organelles to microtubules. CLIP-115 is enriched in the axonal growth cone and it enables neuronal polarization by controlling the stabilization of microtubules. Mutation of CLIP-115 has been associated with Williams-Beuren syndrome.

## Stockage

Stockage:

Stocker à -20°C. Stable pendant un an après l'expédition.

Tampon de stockage:

PBS avec azoture de sodium à 0,02 % et glycérol à 50 % pH 7,3

L'aliquotage n'est pas nécessaire pour le stockage à -20C

\*\*\* Les 20ul contiennent 0,1% de BSA.

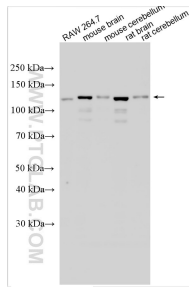
For technical support and original validation data for this product please contact:

T: 1 (888) 4PTGLAB (1-888-478-4522) (toll free in USA), or 1(312) 455-8498 (outside USA)

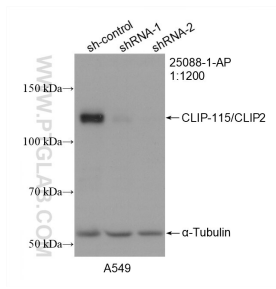
E: [proteintech@ptglab.com](mailto:proteintech@ptglab.com)  
W: [ptglab.com](http://ptglab.com)

This product is exclusively available under Proteintech Group brand and is not available to purchase from any other manufacturer.

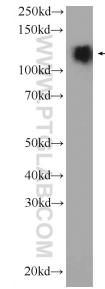
## Données de validation sélectionnées



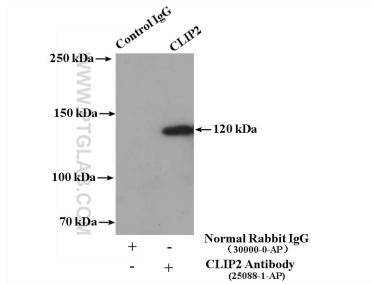
Various lysates were subjected to SDS PAGE followed by western blot with 25088-1-AP (CLIP-115/CLIP2 antibody) at dilution of 1:10000 incubated at room temperature for 1.5 hours.



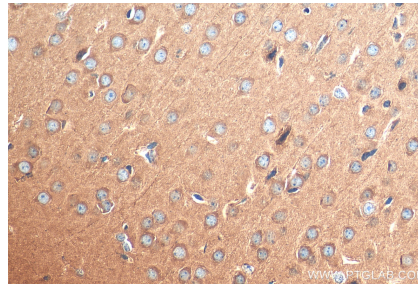
WB result of CLIP-115/CLIP2 antibody (25088-1-AP; 1:1200; incubated at room temperature for 1.5 hours) with sh-Control and sh-CLIP-115/CLIP2 transfected A549 cells.



mouse brain tissue were subjected to SDS PAGE followed by western blot with 25088-1-AP (CLIP-115/CYLN2 antibody at dilution of 1:3000 incubated at room temperature for 1.5 hours.



IP Result of anti-CLIP-115/CYLN2 (IP:25088-1-AP, 4ug; Detection:25088-1-AP 1:1000) with mouse brain tissue lysate 3200ug.



Immunohistochemical analysis of paraffin-embedded mouse brain tissue slide using 25088-1-AP (CLIP-115/CLIP2 antibody) at dilution of 1:800 (under 40x lens). Heat mediated antigen retrieval with Tris-EDTA buffer (pH 9.0).