

À des fins de recherche uniquement

Anticorps Polyclonal de lapin anti-RNF38



Numéro de catalogue: 25132-1-AP

1 Publications

Informations de base

Numéro de catalogue: 25132-1-AP	Numéro d'acquisition GenBank: BC033786	Méthode de purification: Purification par affinité contre l'antigène
Taille: 150ul , Concentration: 700 µg/ml by Nanodrop and 367 µg/ml by Bradford method using BSA as the standard;	Identification du gène (NCBI): 152006	Dilutions recommandées: WB 1:200-1:1000 IHC 1:20-1:200 IF 1:50-1:500
Hôte: Lapin	Nom complet: ring finger protein 38	
Isotype: IgG	MW calculé: 515 aa, 58 kDa	
Immunogen Catalog Number: AG16054	MW observés: 43-58 kDa	

Applications

Applications testées: IF, IHC, WB, ELISA	Contrôles positifs: WB : cellules HepG2, IHC : tissu de cancer de l'endomètre humain, IF : cellules HepG2,
Demandes citées: IHC, WB	
Spécificité de l'espèce: Humain	
Espèces citées: Humain	
Remarque-IHC: il est suggéré de démasquer l'antigène avec un tampon de TE buffer pH 9,0; (*) A défaut, le démasquage de l'antigène peut être effectué avec un tampon citrate pH 6,0.	

Informations générales

RING finger protein 38 is a protein that in humans is encoded by the RNF38 gene. This gene encodes a protein with a coiled-coil motif and a RING-H2 motif (C3H2C2) at its carboxy-terminus. The RING motif is a zinc-binding domain found in a large set of proteins playing roles in diverse cellular processes including oncogenesis, development, signal transduction, and apoptosis. Alternate transcriptional splice variants, encoding different isoforms, have been characterized. RNF38 is widely expressed with highest levels in testis. RNF38 exists various isoforms and molecular weight of isoforms are 36, 48, 52 and 58 kDa

Publications notables

Autrice	Pubmed ID	Journal	Application
Dian Xiong	29581762	J Cancer	WB, IHC

Stockage

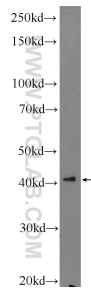
Stockage:
Stocker à -20°C. Stable pendant un an après l'expédition.
Tampon de stockage:
PBS avec azoture de sodium à 0,02 % et glycérol à 50 % pH 7,3
L'aliquotage n'est pas nécessaire pour le stockage à -20C

*** Les 20ul contiennent 0,1% de BSA.

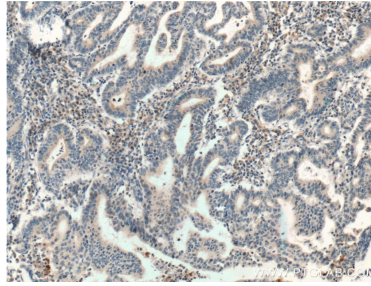
For technical support and original validation data for this product please contact:
T: 1 (888) 4PTGLAB (1-888-478-4522) (toll free in USA), or 1(312) 455-8498 (outside USA)
E: proteintech@ptglab.com
W: ptglab.com

This product is exclusively available under Proteintech Group brand and is not available to purchase from any other manufacturer.

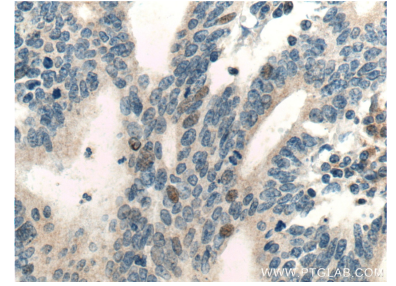
Données de validation sélectionnées



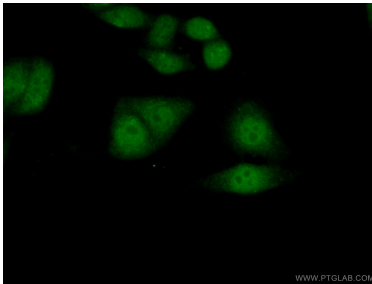
HepG2 cells were subjected to SDS PAGE followed by western blot with 25132-1-AP (RNF38 Antibody) at dilution of 1:300 incubated at room temperature for 1.5 hours.



Immunohistochemical analysis of paraffin-embedded human endometrial cancer tissue slide using 25132-1-AP (RNF38 Antibody) at dilution of 1:200 (under 10x lens). Heat mediated antigen retrieval with Tris-EDTA buffer (pH 9.0).



Immunohistochemical analysis of paraffin-embedded human endometrial cancer tissue slide using 25132-1-AP (RNF38 Antibody) at dilution of 1:200 (under 40x lens). Heat mediated antigen retrieval with Tris-EDTA buffer (pH 9.0).



Immunofluorescent analysis of (10% Formaldehyde) fixed HepG2 cells using 25132-1-AP (RNF38 antibody) at dilution of 1:50 and Alexa Fluor 488-conjugated AffiniPure Goat Anti-Rabbit IgG(H+L).