

À des fins de recherche uniquement

Anticorps Polyclonal de lapin anti-ZCCHC6



Numéro de catalogue: 25196-1-AP

Phare

13 Publications

Informations de base

Numéro de catalogue:
25196-1-AP

Taille:
150ul, Concentration: 650 µg/ml by
Nanodrop and 367 µg/ml by Bradford
method using BSA as the standard;

Hôte:
Lapin

Isotype:
IgG

Immunogen Catalog Number:
AG18240

Numéro d'acquisition GenBank:
BC032456

Identification du gène (NCBI):
79670

Nom complet:
zinc finger, CCHC domain containing
6

MW calculé
1495 aa, 171 kDa

MW observés:
171 kDa

Méthode de purification:
Purification par affinité contre
l'antigène

Dilutions recommandées:
WB 1:500-1:2000
IP 0.5-4.0 ug for IP and 1:500-1:2000
for WB

Applications

Applications testées:
IP, WB, ELISA

Demandes citées:
CoIP, IF, IP, WB

Spécificité de l'espèce:
Humain, rat, souris

Espèces citées:
Humain, souris

Contrôles positifs:

WB : cellules PC-3, cellules HEK-293T, tissu cérébral de
souris

IP : cellules HeLa,

Informations générales

ZCCHC6 also named as KIAA1711, HS2 or TUT7 is a 1495 amino acid protein, which contains three CCHC-type zinc fingers and two PAP-associated domains. A member of the DNA polymerase type-B-like family, ZCCHC6 as a uridylyltransferase that mediates RNA uridylation.

Publications notables

Autrice	Pubmed ID	Journal	Application
Patrick E Lackey	27609902	RNA	
Acong Yang	36071058	Nat Commun	WB, IP
Hagai Marmor-Kollet	33217318	Mol Cell	IF

Stockage

Stockage:

Stocker à -20°C. Stable pendant un an après l'expédition.

Tampon de stockage:

PBS avec azoture de sodium à 0,02 % et glycérol à 50 % pH 7,3

L'aliquotage n'est pas nécessaire pour le stockage à -20C

*** Les 20ul contiennent 0,1% de BSA.

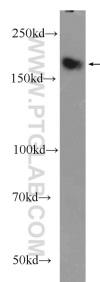
For technical support and original validation data for this product please contact:

T: 1 (888) 4PTGLAB (1-888-478-4522) (toll free
in USA), or 1(312) 455-8498 (outside USA)

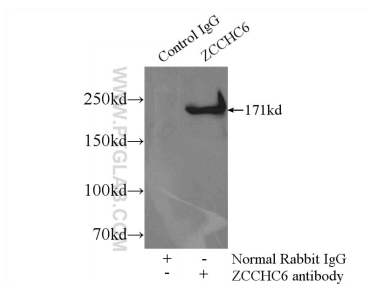
E: proteintech@ptglab.com
W: ptglab.com

This product is exclusively available under Proteintech Group brand and is not available to purchase from any other manufacturer.

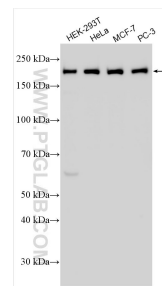
Données de validation sélectionnées



PC-3 cells were subjected to SDS PAGE followed by western blot with 25196-1-AP (ZCCHC6 Antibody) at dilution of 1:1000 incubated at room temperature for 1.5 hours.



IP Result of anti-ZCCHC6 (IP:25196-1-AP, 4ug; Detection:25196-1-AP 1:1000) with HeLa cells lysate 1800ug.



Various lysates were subjected to SDS PAGE followed by western blot with 25196-1-AP (ZCCHC6 antibody) at dilution of 1:3000 incubated at room temperature for 1.5 hours.