

À des fins de recherche uniquement

# Anticorps Polyclonal de lapin anti-SLMAP



Numéro de catalogue: 25220-1-AP

Phare

1 Publications

## Informations de base

Numéro de catalogue:

25220-1-AP

Numéro d'acquisition GenBank:

BC115701

Méthode de purification:

Purification par affinité contre l'antigène

Taille:

150ul, Concentration: 700 µg/ml by Nanodrop and 340 µg/ml by Bradford method using BSA as the standard;

Identification du gène (NCBI):

7871

Dilutions recommandées:

WB 1:500-1:1000

Hôte:

Lapin

Nom complet:

sarcolemma associated protein

MW calculé

828 aa, 95 kDa

Isotype:

IgG

MW observés:

35 kDa, 45 kDa, 63-66 kDa, 83-91 kDa

Immunogen Catalog Number:

AG18162

## Applications

Applications testées:

WB, ELISA

Contrôles positifs:

WB : tissu cardiaque de souris, cellules A431, tissu de muscle squelettique de souris

Demandes citées:

WB

Spécificité de l'espèce:

Humain, souris

Espèces citées:

Humain

## Informations générales

Sarcolemmal membrane associated protein (SLMAP) is a tail-anchored membrane protein involved in the docking and membrane fusion process via protein-protein interactions. Deregulation of SLMAP expression plays an important role in type 2 diabetes, and changes in SLMAP expression are linked to hyperglycemia and diabetes. SLMAPs are components of cardiac membranes and have been identified as a novel regulator of cardiac function. There are several isoforms of SLMAPs with varying molecular size (35, 45, 63, and 83-91 kDa) as a result of alternative splicing. The short 35-kDa isoform is predominantly expressed in cardiac and slow-twitch skeletal muscle, while the 83- to 91-kDa isoform is ubiquitous. This antibody recognizes all of these isoforms in mouse heart lysate. (21785580, 22180652)

## Publications notables

Autrice	Pubmed ID	Journal	Application
Masayoshi Hasegawa	35916358	Thorac Cancer	WB

## Stockage

Stockage:

Stocker à -20°C. Stable pendant un an après l'expédition.

Tampon de stockage:

PBS avec azoture de sodium à 0,02 % et glycérol à 50 % pH 7,3

L'aliquotage n'est pas nécessaire pour le stockage à -20C

\*\*\* Les 20ul contiennent 0,1% de BSA.

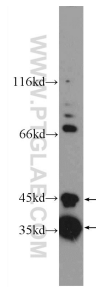
For technical support and original validation data for this product please contact:

T: 1 (888) 4PTGLAB (1-888-478-4522) (toll free in USA), or 1(312) 455-8498 (outside USA)

E: [proteintech@ptglab.com](mailto:proteintech@ptglab.com)  
W: [ptglab.com](http://ptglab.com)

This product is exclusively available under Proteintech Group brand and is not available to purchase from any other manufacturer.

## Données de validation sélectionnées



mouse heart tissue were subjected to SDS PAGE followed by western blot with 25220-1-AP (SLMAP Antibody) at dilution of 1:600 incubated at room temperature for 1.5 hours.