

À des fins de recherche uniquement

# Anticorps Polyclonal de lapin anti-MARF1



Numéro de catalogue: 25233-1-AP

1 Publications

## Informations de base

Numéro de catalogue:

25233-1-AP

Taille:

150ul, Concentration: 500 µg/ml by Nanodrop and 313 µg/ml by Bradford method using BSA as the standard;

Hôte:

Lapin

Isotype:

IgG

Immunogen Catalog Number:

AG18905

Numéro d'acquisition GenBank:

BC137165

Identification du gène (NCBI):

9665

Nom complet:

KIAA0430

MW calculé

1742 aa, 193 kDa

MW observés:

192 kDa

Méthode de purification:

Purification par affinité contre l'antigène

Dilutions recommandées:

WB 1:500-1:1000

IP 0.5-4.0 ug for IP and 1:200-1:1000 for WB

IHC 1:20-1:200

IF 1:50-1:500

## Applications

Applications testées:

IF, IHC, IP, WB, ELISA

Demandes citées:

WB

Spécificité de l'espèce:

Humain, souris

Espèces citées:

Humain

**Remarque-IHC: il est suggéré de démasquer l'antigène avec un tampon de TE buffer pH 9,0; (\*) A défaut, 'le démasquage de l'antigène peut être 'effectué avec un tampon citrate pH 6,0.**

Contrôles positifs:

WB : cellules HEK-293, cellules HeLa

IP : cellules HeLa,

IHC : tissu d'intestin grêle humain, tissu ovarien humain

IF : cellules HEK-293,

## Informations générales

MARF1, also known as KIAA0430, or LKAP, which is expressed in peroxisome. MARF1 is essential regulator of oogenesis and required for female meiotic progression to repress transposable elements and preventing their mobilization, which is essential for the germline integrity. MARF1 probably acts via some RNA metabolic process and is equivalent to the piRNA system in males, which mediates the repression of transposable elements during meiosis by forming complexes composed of RNAs and governs the methylation and subsequent repression of transposons.

## Publications notables

Autrice	Pubmed ID	Journal	Application
Bohan Li	35603216	Front Immunol	WB

## Stockage

Stockage:

Stocker à -20°C. Stable pendant un an après l'expédition.

Tampon de stockage:

PBS avec azoture de sodium à 0,02 % et glycérol à 50 % pH 7,3

L'aliquotage n'est pas nécessaire pour le stockage à -20C

\*\*\* Les 20ul contiennent 0,1% de BSA.

For technical support and original validation data for this product please contact:

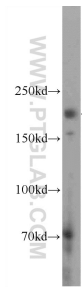
T: 1 (888) 4PTGLAB (1-888-478-4522) (toll free in USA), or 1(312) 455-8498 (outside USA)

E: [proteintech@ptglab.com](mailto:proteintech@ptglab.com)

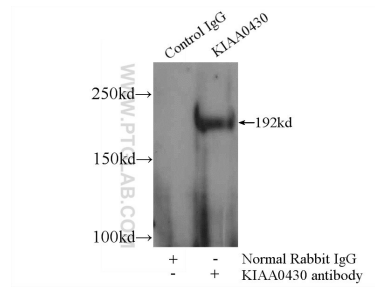
W: [ptglab.com](http://ptglab.com)

This product is exclusively available under Proteintech Group brand and is not available to purchase from any other manufacturer.

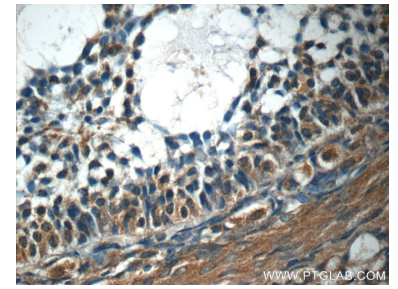
## Données de validation sélectionnées



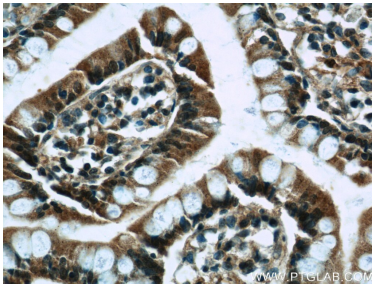
HEK-293 cells were subjected to SDS PAGE followed by western blot with 25233-1-AP (KIAA0430 Antibody) at dilution of 1:600 incubated at room temperature for 1.5 hours.



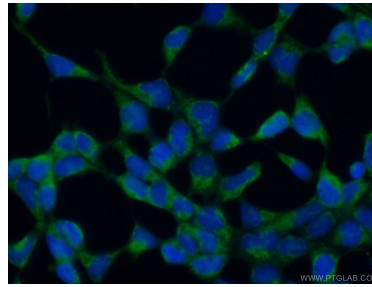
IP Result of anti-KIAA0430 (IP:25233-1-AP, 5ug; Detection:25233-1-AP 1:300) with HeLa cells lysate 2000ug.



Immunohistochemical analysis of paraffin-embedded human ovary tissue slide using 25233-1-AP (KIAA0430 Antibody) at dilution of 1:50 (under 40x lens).



Immunohistochemical analysis of paraffin-embedded human small intestine tissue slide using 25233-1-AP (KIAA0430 Antibody) at dilution of 1:50 (under 40x lens).



Immunofluorescent analysis of (10% Formaldehyde) fixed HEK-293 cells using 25233-1-AP (KIAA0430 antibody) at dilution of 1:50 and Alexa Fluor 488-conjugated AffiniPure Goat Anti-Rabbit IgG(H+L).