

À des fins de recherche uniquement

Anticorps Polyclonal de lapin anti-GUCY2F



Numéro de catalogue: 25252-1-AP

1 Publications

Informations de base

Numéro de catalogue: 25252-1-AP	Numéro d'acquisition GenBank: BC156674	Méthode de purification: Purification par affinité contre l'antigène
Taille: 150ul, Concentration: 550 µg/ml by Nanodrop and 347 µg/ml by Bradford method using BSA as the standard;	Identification du gène (NCBI): 2986	Dilutions recommandées: WB 1:500-1:1000 IHC 1:20-1:200
Hôte: Lapin	Nom complet: guanylate cyclase 2F, retinal	
Isotype: IgG	MW calculé 1108 aa, 125 kDa	
Immunogen Catalog Number: AG19266	MW observés: 125 kDa	

Applications

Applications testées: IHC, WB, ELISA	Contrôles positifs: WB : tissu cardiaque de souris, IHC : tissu cardiaque humain,
Demandes citées: IF	
Spécificité de l'espèce: Humain, souris	
Espèces citées: Humain	
Remarque-IHC: il est suggéré de démasquer l'antigène avec un tampon de TE buffer pH 9,0; (*) A défaut, 'le démasquage de l'antigène peut être 'effectué avec un tampon citrate pH 6,0.	

Informations générales

GUCY2F (Guanylate cyclase 2F, retinal) is also named as GUC2F, RETGC2 and belongs to the adenylyl cyclase class-4/guanylyl cyclase family. GUCY2F may play a specific functional role in the rods and/or cones of photoreceptors. It may be the enzyme involved in the resynthesis of cGMP required for recovery of the dark state after phototransduction. By in situ hybridization, mRNA encoding GUCY2F is found only in the outer nuclear layer and inner segments of photoreceptor cells. By using synthetic peptide antiserum specific for each RetGC subtype, RetGC-2 (GUCY2F) can be distinguished from RetGC-1 as a slightly smaller protein in immunoblots of bovine rod outer segments. (PMID:777544).

Publications notables

Autrice	Pubmed ID	Journal	Application
Suguru Yamasaki	35024589	iScience	IF

Stockage

Stockage:
Stocker à -20°C. Stable pendant un an après l'expédition.
Tampon de stockage:
PBS avec azoture de sodium à 0,02 % et glycérol à 50 % pH 7,3
L'aliquotage n'est pas nécessaire pour le stockage à -20C

*** Les 20ul contiennent 0,1% de BSA.

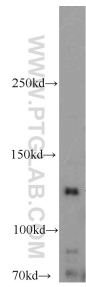
For technical support and original validation data for this product please contact:

T: 1 (888) 4PTGLAB (1-888-478-4522) (toll free in USA), or 1(312) 455-8498 (outside USA)

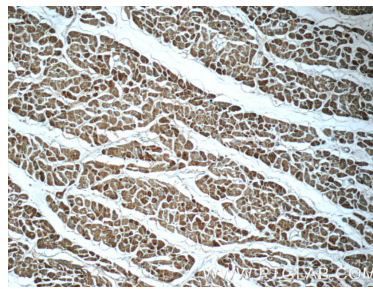
E: proteintech@ptglab.com
W: ptglab.com

This product is exclusively available under Proteintech Group brand and is not available to purchase from any other manufacturer.

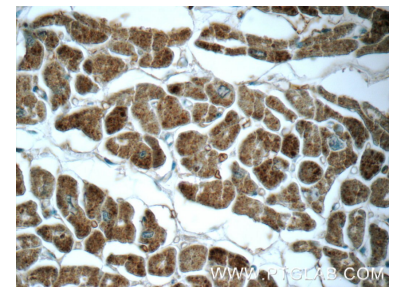
Données de validation sélectionnées



mouse heart tissue were subjected to SDS PAGE followed by western blot with 25252-1-AP (GUCY2F Antibody) at dilution of 1:600 incubated at room temperature for 1.5 hours.



Immunohistochemical analysis of paraffin-embedded human heart tissue slide using 25252-1-AP (GUCY2F Antibody) at dilution of 1:50 (under 10x lens).



Immunohistochemical analysis of paraffin-embedded human heart tissue slide using 25252-1-AP (GUCY2F Antibody) at dilution of 1:50 (under 40x lens).