

À des fins de recherche uniquement

Anticorps Polyclonal de lapin anti-VGLUT2



Numéro de catalogue: 25261-1-AP

Informations de base

Numéro de catalogue:
25261-1-AP

Taille:
150ul, Concentration: 900 µg/ml by
Nanodrop and 313 µg/ml by Bradford
method using BSA as the standard;

Hôte:
Lapin

Isotype:
IgG

Numéro d'acquisition GenBank:
NM_020346

Identification du gène (NCBI):
57084

Nom complet:
solute carrier family 17 (sodium-
dependent inorganic phosphate
cotransporter), member 6

MW calculé
64 kDa

MW observés:
60 kDa

Méthode de purification:
Purification par affinité contre
l'antigène

Dilutions recommandées:
WB 1:500-1:1000

Applications

Applications testées:
WB, ELISA

Spécificité de l'espèce:
Humain

Contrôles positifs:

WB : tissu cérébral humain fœtal,

Informations générales

VGLUT2, also known as SLC17A6, belongs to the major facilitator superfamily. VGLUT2 is a multifunctional transporter that transports phosphate at the plasma membrane and glutamate in synaptic vesicles (PMID:33440152, 11432869). VGLUT2 is involved in neurotransmitter loading into synaptic vesicle (PMID: 11698620). VGLUT2 is predominantly expressed in adult and fetal brain, with highest expression in the medulla, substantia nigra, subthalamic nucleus, and thalamus, and low levels in the cerebellum and hippocampus (PMID:10820226).

Stockage

Stockage:

Stocker à -20°C. Stable pendant un an après l'expédition.

Tampon de stockage:

PBS avec azoture de sodium à 0,02 % et glycérol à 50 % pH 7,3
L'aliquotage n'est pas nécessaire pour le stockage à -20C

*** Les 20ul contiennent 0,1% de BSA.

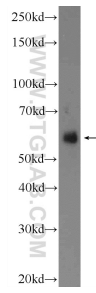
For technical support and original validation data for this product please contact:

T: 1 (888) 4PTGLAB (1-888-478-4522) (toll free
in USA), or 1(312) 455-8498 (outside USA)

E: proteintech@ptglab.com
W: ptglab.com

This product is exclusively available under Proteintech Group brand and is not available to purchase from any other manufacturer.

Données de validation sélectionnées



fetal human brain tissue were subjected to SDS PAGE followed by western blot with 25261-1-AP (VGLUT2 antibody at dilution of 1:600 incubated at room temperature for 1.5 hours.