

À des fins de recherche uniquement

# Anticorps Polyclonal de lapin anti-Nesprin 2



Numéro de catalogue: 25265-1-AP

## Informations de base

<b>Numéro de catalogue:</b> 25265-1-AP	<b>Numéro d'acquisition GenBank:</b> NM_015180	<b>Méthode de purification:</b> Purification par affinité contre l'antigène
<b>Taille:</b> 150ul , Concentration: 650 µg/ml by Nanodrop and 340 µg/ml by Bradford method using BSA as the standard;	<b>Identification du gène (NCBI):</b> 23224	<b>Dilutions recommandées:</b> WB 1:500-1:1000
<b>Hôte:</b> Lapin	<b>Nom complet:</b> spectrin repeat containing, nuclear envelope 2	
<b>Isotype:</b> IgG	<b>MW calculé:</b> 799 kDa	
	<b>MW observés:</b> 50-60 kDa	

## Applications

<b>Applications testées:</b> IF, WB, ELISA	<b>Contrôles positifs:</b> WB : cellules HEK-293,
<b>Spécificité de l'espèce:</b> Humain	

## Informations générales

Nesprin-2 is a member of actin-binding proteins that localize to the outer nuclear membrane. As a nuclear envelope component it provides a link between cytoskeletal components of the cytoplasm and the nucleoplasm. Nesprin genes generate, through alternative splicing and alternative promoter and/or terminator usage, a multitude of differentially expressed isoforms, differing in domain architecture and length. The largest protein isoform, known as NUANCE or GIANT, has a predicted MW around 796 kDa. Other isoforms range from 30 kDa to 119 kDa.

## Stockage

**Stockage:**  
Stocker à -20°C. Stable pendant un an après l'expédition.  
**Tampon de stockage:**  
PBS avec azoture de sodium à 0,02 % et glycérol à 50 % pH 7,3  
L'aliquotage n'est pas nécessaire pour le stockage à -20C

**\*\*\* Les 20ul contiennent 0,1% de BSA.**

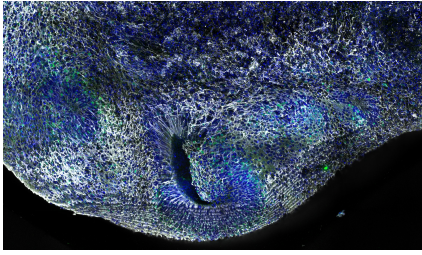
For technical support and original validation data for this product please contact:

T: 1 (888) 4PTGLAB (1-888-478-4522) (toll free in USA), or 1(312) 455-8498 (outside USA)

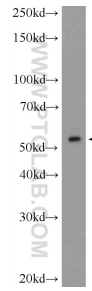
E: proteintech@ptglab.com  
W: ptglab.com

**This product is exclusively available under Proteintech Group brand and is not available to purchase from any other manufacturer.**

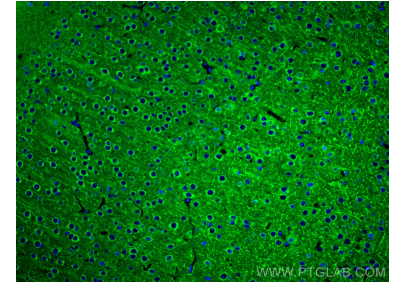
## Données de validation sélectionnées



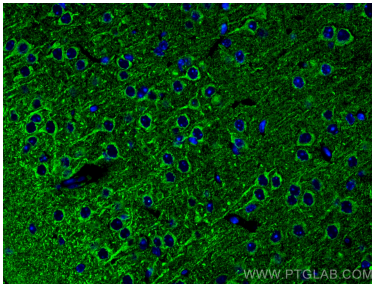
Human dorsal cerebral organoid at 12 weeks. 4% PFA fixed. Antibody dilution was 1:500 for Syne-2 (25265-1-AP; white), DAPI 1:1000. Image created by Wimmer Ryszard from the Institut Curie in Paris, France



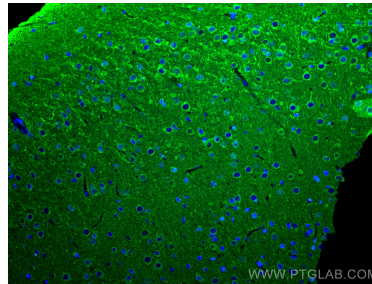
HEK-293 cells were subjected to SDS PAGE followed by western blot with 25265-1-AP (SYNE2 Antibody) at dilution of 1:600 incubated at room temperature for 1.5 hours.



Immunofluorescent analysis of (4% PFA) fixed mouse brain tissue using Nesprin 2 antibody (25265-1-AP) at dilution of 1:200 and CoraLite®488-Conjugated AffiniPure Goat Anti-Rabbit IgG(H+L).



Immunofluorescent analysis of (4% PFA) fixed mouse brain tissue using Nesprin 2 antibody (25265-1-AP) at dilution of 1:200 and CoraLite®488-Conjugated AffiniPure Goat Anti-Rabbit IgG(H+L).



Immunofluorescent analysis of (4% PFA) fixed rat brain tissue using Nesprin 2 antibody (25265-1-AP) at dilution of 1:200 and CoraLite®488-Conjugated AffiniPure Goat Anti-Rabbit IgG(H+L).