

À des fins de recherche uniquement

Anticorps Polyclonal de lapin anti-Desmoplakin



Numéro de catalogue: 25318-1-AP

Phare

12 Publications

Informations de base

Numéro de catalogue:

25318-1-AP

Taille:

150ul, Concentration: 600 µg/ml by Nanodrop;

Hôte:

Lapin

Isotype:

IgG

Immunogen Catalog Number:

AG18065

Numéro d'acquisition GenBank:

BC140802

Identification du gène (NCBI):

1832

Nom complet:

desmoplakin

MW calculé

2871 aa, 332 kDa

MW observés:

240-330 kDa

Méthode de purification:

Purification par affinité contre l'antigène

Dilutions recommandées:

WB 1:500-1:2000

IHC 1:2500-1:10000

IF 1:750-1:3000

Applications

Applications testées:

FC, IF, IHC, WB, ELISA

Demandes citées:

IF, IP, WB

Spécificité de l'espèce:

Humain, rat, souris

Espèces citées:

Humain, rat, souris

Contrôles positifs:

WB : cellules HepG2, cellules A431, cellules BxPC-3, cellules HEK-293, cellules HeLa, tissu cardiaque de souris

IHC : tissu cardiaque de rat, tissu cardiaque de souris

IF : cellules A431, tissu cardiaque de rat

Remarque-IHC: il est suggéré de démasquer l'antigène avec un tampon de TE buffer pH 9,0; (*) À défaut, le démasquage de l'antigène peut être effectué avec un tampon citrate pH 6,0.

Informations générales

The desmoplakin (DP) is the most abundant desmosomal proteins and is located at the cytoplasmic portion of the desmosomes which are specialized cell-cell adhesion structures abundant in tissues such as muscle and epidermis that are subjected to mechanical stress. Desmoplakin 1 and 2 (DP 1 and 2) are two splice variants sharing common C-terminal and N-terminal globular head and tail domains, but differ in the length of the rod domain that links them. This antibody detects both DP1 (280-330 kDa) and DP2 (240-260 kDa). (PMID: 16467215, 11781569)

Publications notables

Autrice	Pubmed ID	Journal	Application
Jing Wang	36357564	Cancer Gene Ther	WB
Yanlei Yang	33993187	Cell Death Discov	WB
Tomohiko Sano	33802279	Cancers (Basel)	WB

Stockage

Stockage:

Stocker à -20°C. Stable pendant un an après l'expédition.

Tampon de stockage:

PBS avec azoture de sodium à 0,02 % et glycérol à 50 % pH 7,3

L'aliquotage n'est pas nécessaire pour le stockage à -20C

***** Les 20ul contiennent 0,1% de BSA.**

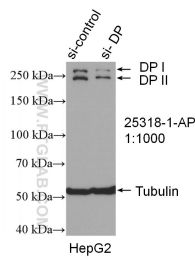
For technical support and original validation data for this product please contact:

T: 1 (888) 4PTGLAB (1-888-478-4522) (toll free in USA), or 1(312) 455-8498 (outside USA)

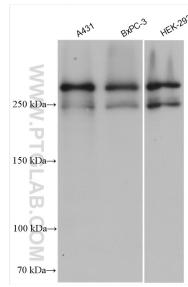
E: proteintech@ptglab.com
W: ptglab.com

This product is exclusively available under Proteintech Group brand and is not available to purchase from any other manufacturer.

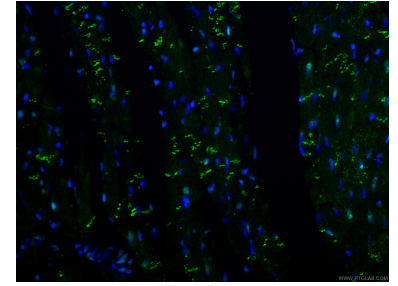
Données de validation sélectionnées



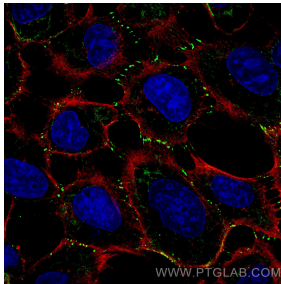
WB result of Desmoplakin antibody (25318-1-AP; 1:1000; incubated at room temperature for 1.5 hours) with sh-Control and sh-Desmoplakin transfected HepG2 cells.



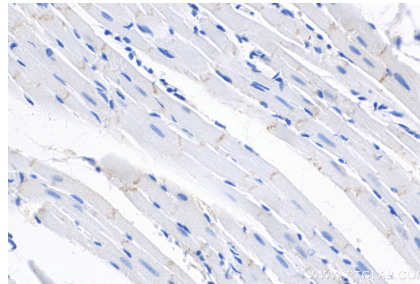
Various lysates were subjected to SDS PAGE followed by western blot with 25318-1-AP (Desmoplakin antibody) at dilution of 1:8000 incubated at room temperature for 1.5 hours.



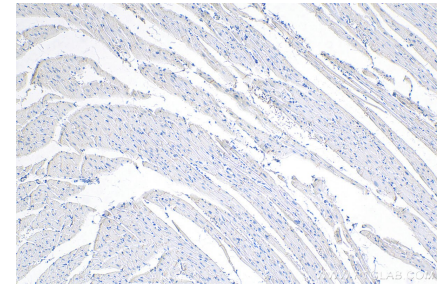
Immunofluorescent analysis of (4% PFA) fixed rat heart tissue using 25318-1-AP (Desmoplakin antibody), at dilution of 1:500 and CoraLite® 488-Conjugated AffiniPure Goat Anti-Rabbit IgG(H+L).



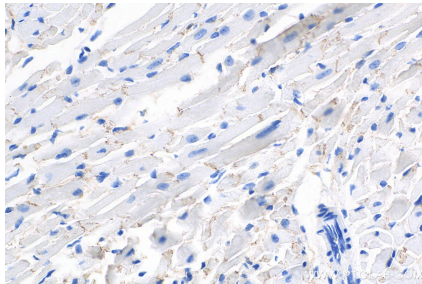
Immunofluorescent analysis of (-20°C Methanol) fixed A431 cells using Desmoplakin antibody (25318-1-AP) at dilution of 1:1500 and CoraLite® 488-Conjugated AffiniPure Goat Anti-Rabbit IgG(H+L), Beta Actin antibody (66009-1-Ig, Clone: 2D4H5, red).



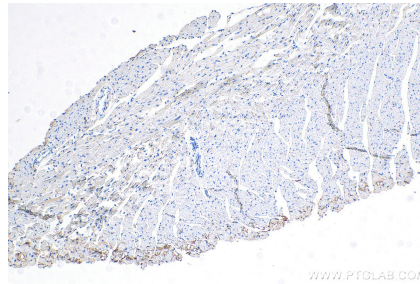
Immunohistochemical analysis of paraffin-embedded rat heart tissue slide using 25318-1-AP (Desmoplakin antibody) at dilution of 1:5000 (under 40x lens). Heat mediated antigen retrieval with Tris-EDTA buffer (pH 9.0).



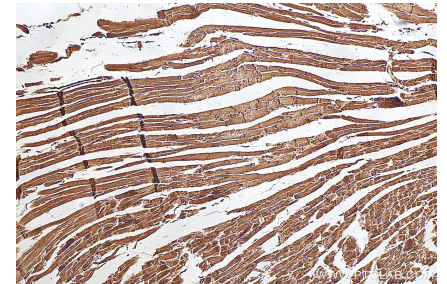
Immunohistochemical analysis of paraffin-embedded rat heart tissue slide using 25318-1-AP (Desmoplakin antibody) at dilution of 1:5000 (under 10x lens). Heat mediated antigen retrieval with Tris-EDTA buffer (pH 9.0).



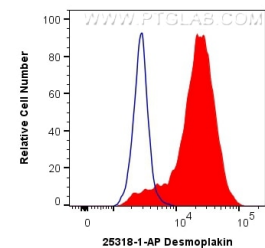
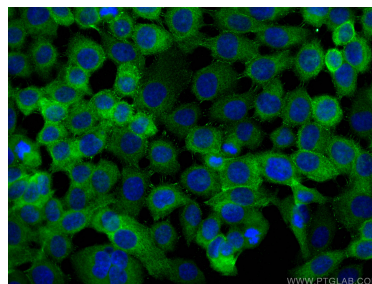
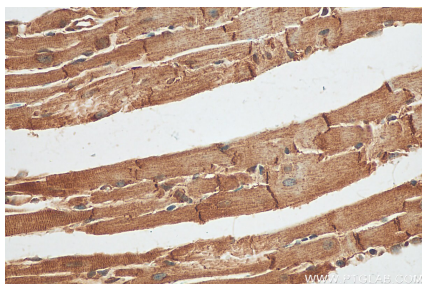
Immunohistochemical analysis of paraffin-embedded mouse heart tissue slide using 25318-1-AP (Desmoplakin antibody) at dilution of 1:5000 (under 40x lens). Heat mediated antigen retrieval with Tris-EDTA buffer (pH 9.0).



Immunohistochemical analysis of paraffin-embedded mouse heart tissue slide using 25318-1-AP (Desmoplakin antibody) at dilution of 1:5000 (under 10x lens). Heat mediated antigen retrieval with Tris-EDTA buffer (pH 9.0).



Immunohistochemical analysis of paraffin-embedded mouse heart tissue slide using 25318-1-AP (Desmoplakin antibody) at dilution of 1:800 (under 10x lens). Heat mediated antigen retrieval with Tris-EDTA buffer (pH 9.0).



Immunohistochemical analysis of paraffin-embedded mouse heart tissue slide using 25318-1-AP (Desmoplakin antibody) at dilution of 1:800 (under 40x lens). Heat mediated antigen retrieval with Tris-EDTA buffer (pH 9.0).

Immunofluorescent analysis of (-20°C Methanol) fixed A431 cells using Desmoplakin antibody (25318-1-AP) at dilution of 1:200 and CoraLite®488-Conjugated AffiniPure Goat Anti-Rabbit IgG(H+L).

1X10⁶ A431 cells were intracellularly stained with 0.4 ug Anti-Human Desmoplakin (25318-1-AP) and CoraLite®488-Conjugated AffiniPure Goat Anti-Rabbit IgG(H+L) at dilution 1:1000 (red), or 0.4 ug Control Antibody. Cells were fixed with 4% PFA and permeabilized with Flow Cytometry Perm Buffer (PF00011-C).