

À des fins de recherche uniquement

Anticorps Polyclonal de lapin anti-TRH



Numéro de catalogue: 25332-1-AP

Informations de base

Numéro de catalogue: 25332-1-AP	Numéro d'acquisition GenBank: BC074889	Méthode de purification: Purification par affinité contre l'antigène
Taille: 150ul , Concentration: 500 µg/ml by Nanodrop;	Identification du gène (NCBI): 7200	Dilutions recommandées: WB 1:500-1:1000 IF 1:50-1:500
Hôte: Lapin	Nom complet: thyrotropin-releasing hormone	
Isotype: IgG	MW calculé: 242 aa, 27 kDa	
Immunogen Catalog Number: AG12623	MW observés: 27-33 kDa	

Applications

Applications testées: IF, WB, ELISA	Contrôles positifs: WB : cellules A549, cellules BxPC-3
Spécificité de l'espèce: Humain, souris	IF : tissu de cervelet de souris,

Informations générales

TRH, Thyrotropin-releasing hormone, as a component of the hypothalamic-pituitary-thyroid axis, controls the secretion of thyroid-stimulating hormone (TSH) and is involved in thyroid hormone synthesis regulation. It also operates as modulator of hair growth and promotes hair-shaft elongation, prolongs the hair cycle growth phase (anagen) and antagonizes its termination (catagen) by TGFB2. It stimulates proliferation and inhibits apoptosis of hair matrix keratinocytes. TRH is expressed in hypothalamus and the hair follicle epithelium (PMID: 19825978).

Stockage

Stockage:
Stocker à -20°C. Stable pendant un an après l'expédition.
Tampon de stockage:
PBS avec azoture de sodium à 0,02 % et glycérol à 50 % pH 7,3
L'aliquotage n'est pas nécessaire pour le stockage à -20C

***** Les 20ul contiennent 0,1% de BSA.**

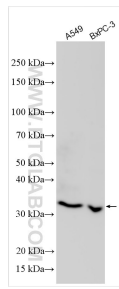
For technical support and original validation data for this product please contact:

T: 1 (888) 4PTGLAB (1-888-478-4522) (toll free in USA), or 1(312) 455-8498 (outside USA)

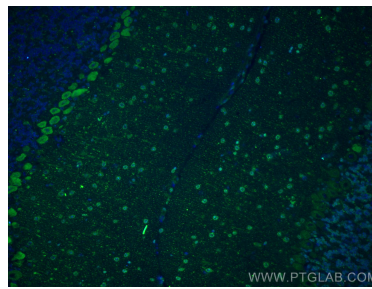
E: proteintech@ptglab.com
W: ptglab.com

This product is exclusively available under Proteintech Group brand and is not available to purchase from any other manufacturer.

Données de validation sélectionnées



Various lysates were subjected to SDS PAGE followed by western blot with 25332-1-AP (TRH antibody) at dilution of 1:500 incubated at room temperature for 1.5 hours.



Immunofluorescent analysis of (4% PFA) fixed mouse cerebellum tissue using TRH antibody (25332-1-AP) at dilution of 1:200 and CoraLite®488-Conjugated AffiniPure Goat Anti-Rabbit IgG(H+L).