

À des fins de recherche uniquement

Anticorps Polyclonal de lapin anti-CHD3



Numéro de catalogue: 25335-1-AP

Informations de base

Numéro de catalogue: 25335-1-AP	Numéro d'acquisition GenBank: NML_005852	Méthode de purification: Purification par affinité contre l'antigène
Taille: 150ul, Concentration: 900 µg/ml by Nanodrop and 347 µg/ml by Bradford method using BSA as the standard;	Identification du gène (NCBI): 1107	Dilutions recommandées: WB 1:500-1:2000 IHC 1:50-1:500 IF 1:50-1:500
Hôte: Lapin	Nom complet: chromodomain helicase DNA binding protein 3	
Isotype: IgG	MW calculé: 227 kDa	
	MW observés: 240 kDa	

Applications

Applications testées:
IF, IHC, WB, ELISA

Spécificité de l'espèce:
Humain, souris

Remarque-IHC: il est suggéré de démasquer l'antigène avec un tampon de TE buffer pH 9,0; (*) À défaut, 'le démasquage de l'antigène peut être effectué avec un tampon citrate pH 6,0.

Contrôles positifs:

WB : cellules MCF-7, cellules HEK-293

IHC : tissu cérébral de souris, tissu de côlon humain

IF : cellules HeLa,

Informations générales

CHD3, also named as Mi2 ALPHA or Zinc finger helicase, is a 2000 amino acid protein, which contains one helicase C-terminal domain, one helicase ATP-binding domain, and two chromo domain. CHD3 localizes in the nucleus and cytoplasm. CHD3 is widely expressed. CHD3 is a component of the histone deacetylase NuRD complex, which participates in the remodeling of chromatin by deacetylating histones. CHD3 is required for anchoring centrosomal pericentric in both interphase and mitosis.

Stockage

Stockage:

Stocker à -20°C. Stable pendant un an après l'expédition.

Tampon de stockage:

PBS avec azoture de sodium à 0,02 % et glycérol à 50 % pH 7,3

L'aliquotage n'est pas nécessaire pour le stockage à -20C

***** Les 20ul contiennent 0,1% de BSA.**

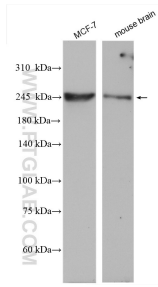
For technical support and original validation data for this product please contact:

T: 1 (888) 4PTGLAB (1-888-478-4522) (toll free in USA), or 1(312) 455-8498 (outside USA)

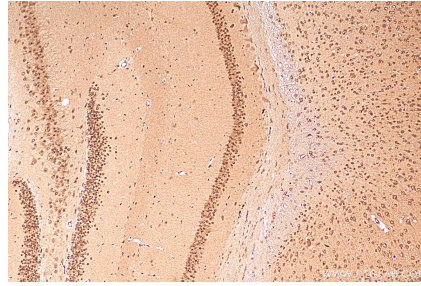
E: proteintech@ptglab.com
W: ptglab.com

This product is exclusively available under Proteintech Group brand and is not available to purchase from any other manufacturer.

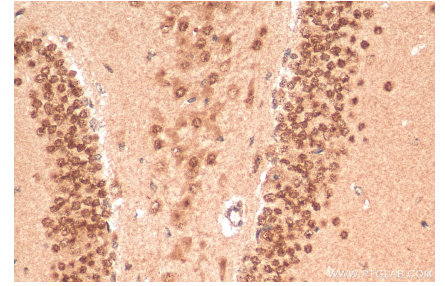
Données de validation sélectionnées



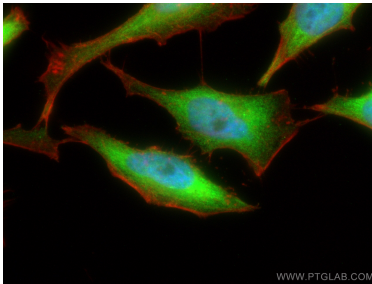
MCF-7 cells were subjected to SDS PAGE followed by western blot with 25335-1-AP (CHD3 antibody) at dilution of 1:1000 incubated at room temperature for 1.5 hours.



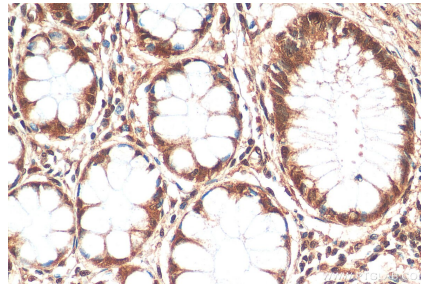
Immunohistochemical analysis of paraffin-embedded mouse brain tissue slide using 25335-1-AP (CHD3 antibody) at dilution of 1:200 (under 10x lens). Heat mediated antigen retrieval with Tris-EDTA buffer (pH 9.0).



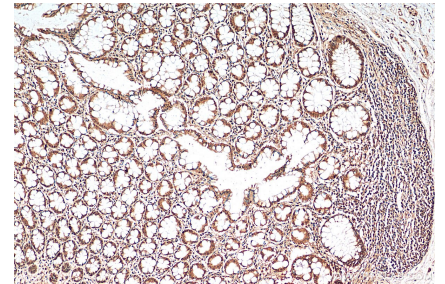
Immunohistochemical analysis of paraffin-embedded mouse brain tissue slide using 25335-1-AP (CHD3 antibody) at dilution of 1:200 (under 40x lens). Heat mediated antigen retrieval with Tris-EDTA buffer (pH 9.0).



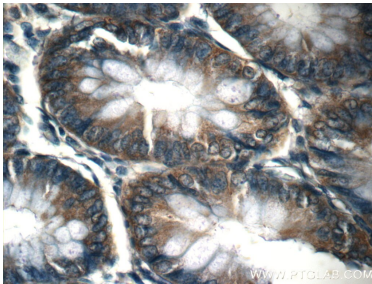
Immunofluorescent analysis of (4% PFA) fixed HeLa cells using CHD3 antibody (25335-1-AP) at dilution of 1:200 and CoralLite@488-Conjugated AffiniPure Goat Anti-Rabbit IgG(H+L), CL594-phalloidin (red).



Immunohistochemical analysis of paraffin-embedded human colon tissue slide using 25335-1-AP (CHD3 antibody) at dilution of 1:200 (under 40x lens). Heat mediated antigen retrieval with Tris-EDTA buffer (pH 9.0).



Immunohistochemical analysis of paraffin-embedded human colon tissue slide using 25335-1-AP (CHD3 antibody) at dilution of 1:200 (under 10x lens). Heat mediated antigen retrieval with Tris-EDTA buffer (pH 9.0).



Immunohistochemical analysis of paraffin-embedded human colon tissue slide using 25335-1-AP (CHD3 Antibody) at dilution of 1:50 (under 40x lens).