

À des fins de recherche uniquement

Anticorps Polyclonal de lapin anti-FAM160B1



Numéro de catalogue: 25388-1-AP

Informations de base

Numéro de catalogue:
25388-1-AP

Taille:
150ul, Concentration: 600 µg/ml by
Nanodrop and 420 µg/ml by Bradford
method using BSA as the standard;

Hôte:
Lapin

Isotype:
IgG

Immunogen Catalog Number:
AG22051

Numéro d'acquisition GenBank:
BC037207

Identification du gène (NCBI):
57700

Nom complet:
family with sequence similarity 160,
member B1

MW calculé
765 aa, 86 kDa

MW observés:
105 kDa

Méthode de purification:
Purification par affinité contre
l'antigène

Dilutions recommandées:
WB 1:500-1:1000
IP 0.5-4.0 ug for IP and 1:200-1:1000
for WB
IF 1:20-1:200

Applications

Applications testées:
IF, IP, WB, ELISA

Spécificité de l'espèce:
Humain

Contrôles positifs:

WB : cellules PC-3,

IP : cellules PC-3,

IF : cellules PC-3,

Informations générales

FAM160B1, also named as KIAA1600, is a 765 amino acid protein, which belongs to the UPF0518 family. The biological function of FAM160B1 is still non-known. FAM160B1 exists as two isoforms and the molecular weight of isoform one is a 86 kDa protein. The isoform two is produced by alternative splicing and is a 83 kDa protein. There are modified residues of FAM160B1 protein, so we detected 95 kDa and 100 kDa two bands by western blotting.

Stockage

Stockage:

Stocker à -20°C. Stable pendant un an après l'expédition.

Tampon de stockage:

PBS avec azoture de sodium à 0,02 % et glycérol à 50 % pH 7,3

L'aliquotage n'est pas nécessaire pour le stockage à -20C

*** Les 20ul contiennent 0,1% de BSA.

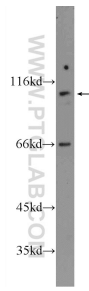
For technical support and original validation data for this product please contact:

T: 1 (888) 4PTGLAB (1-888-478-4522) (toll free
in USA), or 1(312) 455-8498 (outside USA)

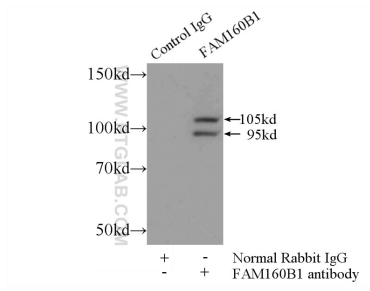
E: proteintech@ptglab.com
W: ptglab.com

This product is exclusively available under Proteintech Group brand and is not available to purchase from any other manufacturer.

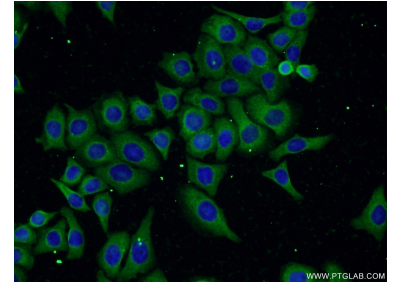
Données de validation sélectionnées



PC-3 cells were subjected to SDS PAGE followed by western blot with 25388-1-AP (FAM160B1 Antibody) at dilution of 1:600 incubated at room temperature for 1.5 hours.



IP Result of anti-FAM160B1 (IP:25388-1-AP, 5ug; Detection:25388-1-AP 1:300) with PC-3 cells lysate 1500ug.



Immunofluorescent analysis of PC-3 cells using 25388-1-AP (FAM160B1 antibody) at dilution of 1:50 and Alexa Fluor 488-conjugated AffiniPure Goat Anti-Rabbit IgG(H+L).