

À des fins de recherche uniquement

Anticorps Polyclonal de lapin anti-CD209



Numéro de catalogue: 25404-1-AP

Phare

1 Publications

Informations de base

Numéro de catalogue:

25404-1-AP

Numéro d'acquisition GenBank:

BC110615

Méthode de purification:

Purification par affinité contre l'antigène

Taille:

150ul, Concentration: 400 µg/ml by Nanodrop and 233 µg/ml by Bradford method using BSA as the standard;

Identification du gène (NCBI):

30835

Dilutions recommandées:

WB 1:500-1:2400

Hôte:

Lapin

Nom complet:

CD209 molecule

MW calculé

404 aa, 45.7 kDa

Isotype:

IgG

MW observés:

45 kDa

Immunogen Catalog Number:

AG21863

Applications

Applications testées:

FC, WB, ELISA

Contrôles positifs:

WB : tissu placentaire humain,

Demandes citées:

WB

Spécificité de l'espèce:

Humain

Espèces citées:

Humain

Informations générales

CD209 (DC-SIGN, CLEC4L) is a C-type lectin receptor that is involved in the innate immune system and recognizes numerous evolutionarily divergent pathogens, including bacteria, viruses, and parasites. CD209 is preferentially expressed on dendritic cells (DCs). It mediates transient adhesion of DCs with T cells. It has been reported that CD209 plays a role in capture and transmission of HIV from DC to T cells (PMID: 10721995).

Publications notables

| Autrice | Pubmed ID | Journal | Application |
|---------|-----------|----------|-------------|
| Qiao Lu | 34048708 | Immunity | WB |

Stockage

Stockage:

Stocker à -20°C. Stable pendant un an après l'expédition.

Tampon de stockage:

PBS avec azote de sodium à 0,02 % et glycérol à 50 % pH 7,3

L'aliquotage n'est pas nécessaire pour le stockage à -20C

*** Les 20ul contiennent 0,1% de BSA.

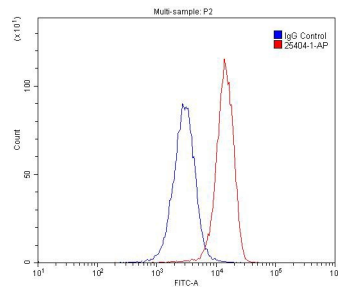
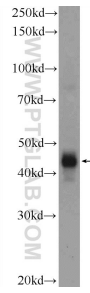
For technical support and original validation data for this product please contact:

T: 1 (888) 4PTGLAB (1-888-478-4522) (toll free in USA), or 1(312) 455-8498 (outside USA)

E: proteintech@ptglab.com
W: ptglab.com

This product is exclusively available under Proteintech Group brand and is not available to purchase from any other manufacturer.

Données de validation sélectionnées



human placenta tissue were subjected to SDS PAGE followed by western blot with 25404-1-AP (CD209 Antibody) at dilution of 1:1200 incubated at room temperature for 1.5 hours.

1X10⁶ U-937 cells were stained with 0.2ug CD209 antibody (25404-1-AP, red) and control antibody (blue). Fixed with 4% PFA blocked with 3% BSA (30 min). Alexa Fluor 488-conjugated AffiniPure Goat Anti-Rabbit IgG(H+L) with dilution 1:1500.