

À des fins de recherche uniquement

Anticorps Polyclonal de lapin anti-SRPK2



Numéro de catalogue: 25417-1-AP

Phare

1 Publications

Informations de base

Numéro de catalogue:

25417-1-AP

Taille:

150ul, Concentration: 900 µg/ml by Nanodrop and 433 µg/ml by Bradford method using BSA as the standard;

Hôte:

Lapin

Isotype:

IgG

Immunogen Catalog Number:

AG17885

Numéro d'acquisition GenBank:

BC035214

Identification du gène (NCBI):

6733

Nom complet:

SFRS protein kinase 2

MW calculé

688 aa, 78 kDa

MW observés:

105-110 kDa

Méthode de purification:

Purification par affinité contre l'antigène

Dilutions recommandées:

WB 1:500-1:1000

IP 0.5-4.0 ug for IP and 1:200-1:1000 for WB

IHC 1:50-1:500

Applications

Applications testées:

IHC, IP, WB, ELISA

Demandes citées:

IF, WB

Spécificité de l'espèce:

Humain

Espèces citées:

Humain

Remarque-IHC: il est suggéré de démasquer l'antigène avec un tampon de TE buffer pH 9,0; (*) A défaut, le démasquage de l'antigène peut être effectué avec un tampon citrate pH 6,0.

Contrôles positifs:

WB : cellules HeLa,

IP : cellules HeLa,

IHC : tissu testiculaire de souris, tissu cérébral de souris

Informations générales

SRPK2, also named as serine/arginine protein kinase 2 and SFRSK2, belongs to SR protein-specific kinase family which phosphorylate the serine/arginine domain containing proteins in the nuclear speckles to mediate pre-mRNA splicing (PMID: 22854045). In addition to its major role as kinase for the phosphorylation of SR proteins, SRPK2 is involved in cell cycle regulation and cell apoptosis (PMID: 19592491). SRPK2 promotes the proliferation and migration of the colon cancer cells. It has been reported to be regulated in several cancer types (PMID: 27041240). It has 2 isoforms with the calculated molecular mass of 77-79 kDa, and the apparent molecular mass of 105-115 kDa due to posttranslational modification (PMID: 12134018, 16122776).

Publications notables

Autrice	Pubmed ID	Journal	Application
Guillaume Fonteneau	35674408	Cancer Discov	WB,IF

Stockage

Stockage:

Stocker à -20°C. Stable pendant un an après l'expédition.

Tampon de stockage:

PBS avec azoture de sodium à 0,02 % et glycérol à 50 % pH 7,3

L'aliquotage n'est pas nécessaire pour le stockage à -20C

*** Les 20ul contiennent 0,1% de BSA.

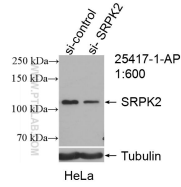
For technical support and original validation data for this product please contact:

T: 1 (888) 4PTGLAB (1-888-478-4522) (toll free in USA), or 1(312) 455-8498 (outside USA)

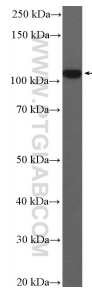
E: proteintech@ptglab.com
W: ptglab.com

This product is exclusively available under Proteintech Group brand and is not available to purchase from any other manufacturer.

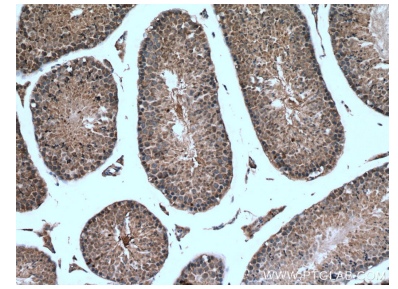
Données de validation sélectionnées



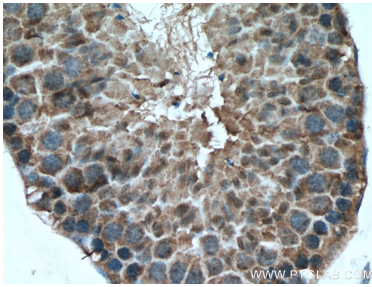
WB result of SRPK2 antibody (25417-1-AP; 1:600; incubated at room temperature for 1.5 hours) with sh-Control and sh-SRPK2 transfected HeLa cells.



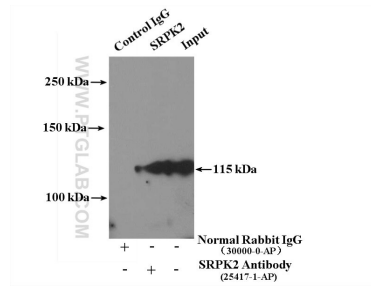
HeLa cells were subjected to SDS PAGE followed by western blot with 25417-1-AP (SRPK2 Antibody) at dilution of 1:600 incubated at room temperature for 1.5 hours.



Immunohistochemical analysis of paraffin-embedded mouse testis tissue slide using 25417-1-AP (SRPK2 antibody) at dilution of 1:200 (under 10x lens). Heat mediated antigen retrieval with Tris-EDTA buffer (pH 9.0).



Immunohistochemical analysis of paraffin-embedded mouse testis tissue slide using 25417-1-AP (SRPK2 antibody) at dilution of 1:200 (under 40x lens). Heat mediated antigen retrieval with Tris-EDTA buffer (pH 9.0).



IP Result of anti-SRPK2 (IP:25417-1-AP, 4ug; Detection:25417-1-AP 1:300) with HeLa cells lysate 3200ug.