

À des fins de recherche uniquement

Anticorps Polyclonal de lapin anti-TWIST1-specific



Numéro de catalogue: 25465-1-AP

Phare

146 Publications

Informations de base

Numéro de catalogue:

25465-1-AP

Taille:

150ul, Concentration: 800 µg/ml by Nanodrop;

Hôte:

Lapin

Isotype:

IgG

Immunogen Catalog Number:

AG21924

Numéro d'acquisition GenBank:

BC036704

Identification du gène (NCBI):

7291

Nom complet:

twist homolog 1 (Drosophila)

MW calculé

202 aa, 21 kDa

MW observés:

25-30 kDa

Méthode de purification:

Purification par affinité contre l'antigène

Dilutions recommandées:

WB 1:1000-1:4000

IP 0.5-4.0 µg for IP and 1:500-1:1000 for WB

IHC 1:50-1:500

IF 1:50-1:500

Applications

Applications testées:

IF, IHC, IP, WB, ELISA

Demandes citées:

ChIP, CoIP, IF, IHC, IP, WB

Spécificité de l'espèce:

Humain

Espèces citées:

Humain, poisson-zèbre, rat, souris

Remarque-IHC: il est suggéré de démasquer l'antigène avec un tampon de TE buffer pH 9,0; (*) À défaut, le démasquage de l'antigène peut être effectué avec un tampon citrate pH 6,0.

Contrôles positifs:

WB : cellules U-251, cellules A549, cellules MDA-MB-231, cellules PC-3, cellules Raji, cellules SH-SY5Y, tissu cérébral de souris

IP : cellules MDA-MB-453s,

IHC : tissu de cancer du foie humain, tissu de cancer du pancréas humain, tissu de cancer du sein humain

IF : cellules HepG2,

Informations générales

Twist-related protein 1 (TWIST1), also named as BHLHA38, is 202 amino acid protein, which contains one bHLH domain. TWIST1 localizes in the nucleus and acts as a transcriptional regulator. TWIST1 inhibits monogenesis by sequestering E proteins and inhibits trans-activation by MEF2. TWIST1 is expressed in subset of mesodermal cells. The antibody reacts specifically with Twist1 protein. The calculated molecular weight of TWIST1 is 21 kDa, but the observed molecular weight is about 30 kDa due to the post-translational modification (PMID: 30733340).

Publications notables

Autrice	Pubmed ID	Journal	Application
XIAOYUE FENG	34528694	Oncol Rep	WB
Yi-Fan Tan	36127329	Cell Death Discov	ChIP, WB
FANG YANG	34733365	Oncol Lett	WB

Stockage

Stockage:

Stocker à -20°C. Stable pendant un an après l'expédition.

Tampon de stockage:

PBS avec azoture de sodium à 0,02 % et glycérol à 50 % pH 7,3

L'aliquotage n'est pas nécessaire pour le stockage à -20C

*** Les 20ul contiennent 0,1% de BSA.

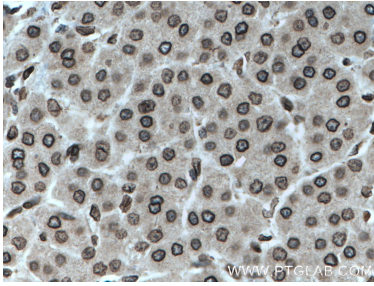
For technical support and original validation data for this product please contact:

T: 1 (888) 4PTGLAB (1-888-478-4522) (toll free in USA), or 1(312) 455-8498 (outside USA)

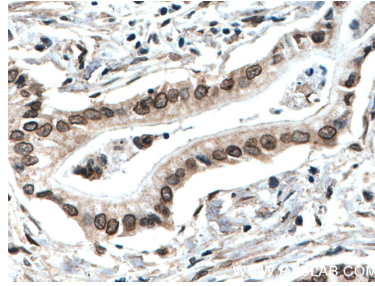
E: proteintech@ptglab.com
W: ptglab.com

This product is exclusively available under Proteintech Group brand and is not available to purchase from any other manufacturer.

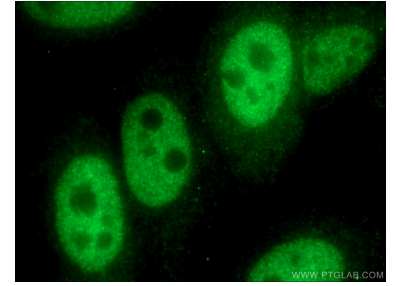
Données de validation sélectionnées



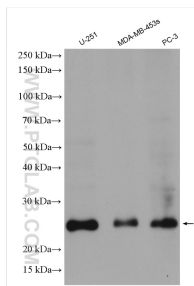
Immunohistochemical analysis of paraffin-embedded human liver cancer tissue slide using 25465-1-AP (TWIST1-specific antibody) at dilution of 1:200 (under 40x lens. Heat mediated antigen retrieval with Tris-EDTA buffer (pH 9.0).



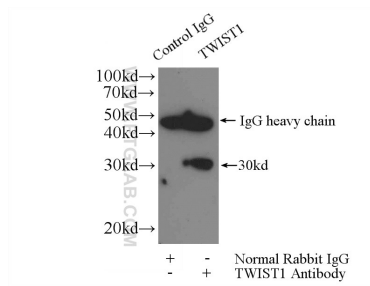
Immunohistochemical analysis of paraffin-embedded human pancreas cancer tissue slide using 25465-1-AP (TWIST1-specific antibody) at dilution of 1:200 (under 40x lens. Heat mediated antigen retrieval with Tris-EDTA buffer (pH 9.0).



Immunofluorescent analysis of (4% PFA) fixed HepG2 cells using 25465-1-AP (TWIST1-specific antibody) at dilution of 1:50 and Alexa Fluor 488-Conjugated AffiniPure Goat Anti-Rabbit IgG(H+L).



Various lysates were subjected to SDS PAGE followed by western blot with 25465-1-AP (TWIST1-specific antibody) at dilution of 1:2000 incubated at room temperature for 1.5 hours.



IP Result of anti-TWIST1-specific (IP:25465-1-AP, 4ug; Detection:25465-1-AP 1:500) with MDA-MB-453s cells lysate 920ug.



SH-SY5Y cells were subjected to SDS PAGE followed by western blot with 25465-1-AP (TWIST1-specific antibody) at dilution of 1:3000 incubated at room temperature for 1.5 hours.