

À des fins de recherche uniquement

Anticorps Polyclonal de lapin anti-CTGF



Numéro de catalogue: 25474-1-AP

17 Publications

Informations de base

Numéro de catalogue:

25474-1-AP

Taille:

150ul, Concentration: 700 µg/ml by Nanodrop;

Hôte:

Lapin

Isotype:

IgG

Numéro d'acquisition GenBank:

NM_001901

Identification du gène (NCBI):

1490

Nom complet:

connective tissue growth factor

MW calculé

38 kDa

MW observés:

35 kDa

Méthode de purification:

Purification par affinité contre l'antigène

Dilutions recommandées:

WB 1:1000-1:4000

Applications

Applications testées:

FC, WB, ELISA

Demandes citées:

IF, IHC, WB

Spécificité de l'espèce:

Humain

Espèces citées:

canin, Chèvre, Humain, porc, rat, souris

Contrôles positifs:

WB : cellules HUVEC, cellules HeLa, cellules U2OS

Informations générales

CTGF, also known as CCN2, is a member of the CCN family of matricellular proteins. CTGF, a cysteine-rich, matrix-associated, heparin-binding protein, is widely expressed in various human tissues and organs. CTGF has important roles in many biological processes, including cell adhesion, migration, proliferation, angiogenesis, skeletal development, and tissue wound repair, and is critically involved in fibrotic disease and several forms of cancers.

Publications notables

Autrice	Pubmed ID	Journal	Application
Tsung-Teng Huang	36267283	Front Pharmacol	WB, IHC
Chenyang Qi	36375573	Life Sci	WB
Youcheng Wang	36483596	Int J Med Sci	WB

Stockage

Stockage:

Stocker à -20°C. Stable pendant un an après l'expédition.

Tampon de stockage:

PBS avec azoture de sodium à 0,02 % et glycérol à 50 % pH 7,3

L'aliquotage n'est pas nécessaire pour le stockage à -20°C

*** Les 20ul contiennent 0,1% de BSA.

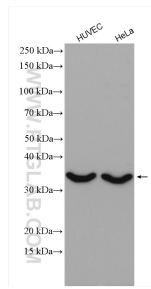
For technical support and original validation data for this product please contact:

T: 1 (888) 4PTGLAB (1-888-478-4522) (toll free in USA), or 1(312) 455-8498 (outside USA)

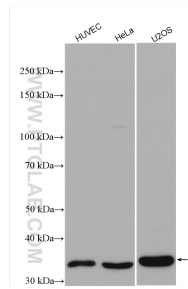
E: proteintech@ptglab.com
W: ptglab.com

This product is exclusively available under Proteintech Group brand and is not available to purchase from any other manufacturer.

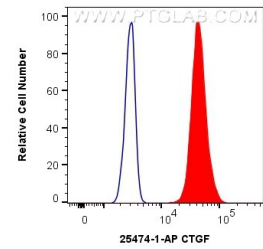
Données de validation sélectionnées



Various lysates were subjected to SDS PAGE followed by western blot with 25474-1-AP (CTGF antibody) at dilution of 1:2000 incubated at room temperature for 1.5 hours.



Various lysates were subjected to SDS PAGE followed by western blot with 25474-1-AP (CTGF antibody) at dilution of 1:4000 incubated at room temperature for 1.5 hours.



1X10⁶ HuH-7 cells were intracellularly stained with 0.4 ug Anti-Human CTGF (25474-1-AP) and CoraLite@488-Conjugated AffiniPure Goat Anti-Rabbit IgG(H+L) at dilution 1:1000 (red), or 0.4 ug Isotype Control. Cells were fixed with 4% PFA and permeabilized with Flow Cytometry Perm Buffer (PF00011-C).