

À des fins de recherche uniquement

Anticorps Polyclonal de lapin anti-YTHDF3-specific



Numéro de catalogue: 25537-1-AP

Phare

61 Publications

Informations de base

Numéro de catalogue:

25537-1-AP

Taille:

150ul, Concentration: 850 µg/ml by Nanodrop;

Hôte:

Lapin

Isotype:

IgG

Immunogen Catalog Number:

AG22374

Numéro d'acquisition GenBank:

BC052970

Identification du gène (NCBI):

253943

Nom complet:

YTH domain family, member 3

MW calculé

585 aa, 64 kDa

MW observés:

64 kDa

Méthode de purification:

Purification par affinité contre l'antigène

Dilutions recommandées:

WB 1:5000-1:50000

IF 1:20-1:200

Applications

Applications testées:

IF, WB, ELISA

Demandes citées:

CoIP, IF, IHC, RIP, WB

Spécificité de l'espèce:

Humain, souris

Espèces citées:

Humain, porc, poulet, souris

Contrôles positifs:

WB : cellules A549, cellules HCT 116, cellules HeLa, cellules HepG2, cellules NIH/3T3, cellules PC-12

IF : cellules A549,

Informations générales

YTHDF3, also named as YTH domain-containing family protein 3, is a 585 amino acid protein, which contains 1 YTH domain. YTHDF3 specifically recognizes and binds N6-methyladenosine (m6A)-containing RNAs. M6A is a modification present at internal sites of mRNAs and some non-coding RNAs and plays a role in the efficiency of mRNA splicing, processing and stability. Our antibody 25537-1-AP specially reacts with YTHDF3 protein.

Publications notables

Autrice	Pubmed ID	Journal	Application
Fanpeng Zhao	34593014	Mol Neurodegener	WB
Kusuma Suphakhong	36183833	J Biol Chem	WB
Deyin Liu	36171455	J Cancer Res Clin Oncol	WB,RIP

Stockage

Stockage:

Stocker à -20°C. Stable pendant un an après l'expédition.

Tampon de stockage:

PBS avec azoture de sodium à 0,02 % et glycérol à 50 % pH 7,3

L'aliquotage n'est pas nécessaire pour le stockage à -20C

*** Les 20ul contiennent 0,1% de BSA.

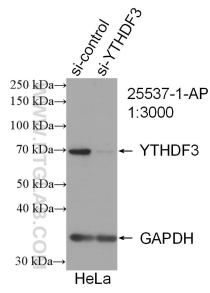
For technical support and original validation data for this product please contact:

T: 1 (888) 4PTGLAB (1-888-478-4522) (toll free in USA), or 1(312) 455-8498 (outside USA)

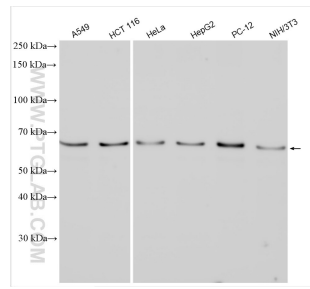
E: proteintech@ptglab.com
W: ptglab.com

This product is exclusively available under Proteintech Group brand and is not available to purchase from any other manufacturer.

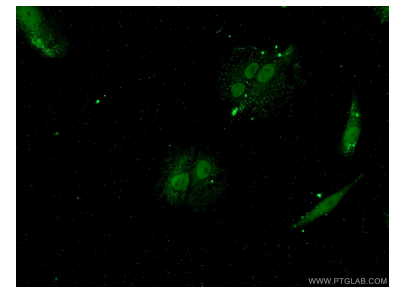
Données de validation sélectionnées



WB result of YTHDF3-specific antibody (25537-1-AP; 1:3000; incubated at room temperature for 1.5 hours) with sh-Control and sh-YTHDF3-specific transfected HeLa cells.



Various lysates were subjected to SDS PAGE followed by western blot with 25537-1-AP (YTHDF3-specific antibody) at dilution of 1:10000 incubated at room temperature for 1.5 hours.



Immunofluorescent analysis of A549 cells using 25537-1-AP (YTHDF3-specific antibody) at dilution of 1:50 and Alexa Fluor 488-conjugated AffiniPure Goat Anti-Rabbit IgG(H+L).