

À des fins de recherche uniquement

# Anticorps Polyclonal de lapin anti-SEC14L1



Numéro de catalogue: 25541-1-AP

## Informations de base

Numéro de catalogue:  
25541-1-AP

Taille:  
150ul, Concentration: 450 µg/ml by  
Nanodrop and 300 µg/ml by Bradford  
method using BSA as the standard;

Hôte:  
Lapin

Isotype:  
IgG

Immunogen Catalog Number:  
AG22233

Numéro d'acquisition GenBank:  
BC142979

Identification du gène (NCBI):  
6397

Nom complet:  
SEC14-like 1 (*S. cerevisiae*)

MW calculé  
719 aa, 82 kDa

MW observés:  
81 kDa, 77 kDa

Méthode de purification:  
Purification par affinité contre  
l'antigène

Dilutions recommandées:  
WB 1:200-1:1000  
IP 0.5-4.0 ug for IP and 1:200-1:1000  
for WB

## Applications

Applications testées:  
IP, WB, ELISA

Spécificité de l'espèce:  
Humain

Contrôles positifs:

WB : cellules Y79,  
IP : cellules HEK-293,

## Informations générales

SEC14L1 (SEC14-like protein 1) is a member of SEC14 family in mammals with the potential to control local phospholipid content in membranes. SEC14L1 may act as a phospholipid transfer protein. It has also been reported that SEC14L1 functions as a novel negative regulator of RIG-I-mediated antiviral signaling and is involved in innate immunity (PMID: 17092608; 23843640). SEC14L1 has three isoforms with the molecular mass of 81.2kDa, 81.8kDa and 77.1kDa.

## Stockage

Stockage:

Stocker à -20°C. Stable pendant un an après l'expédition.

Tampon de stockage:

PBS avec azoture de sodium à 0,02 % et glycérol à 50 % pH 7,3  
L'aliquotage n'est pas nécessaire pour le stockage à -20C

\*\*\* Les 20ul contiennent 0,1% de BSA.

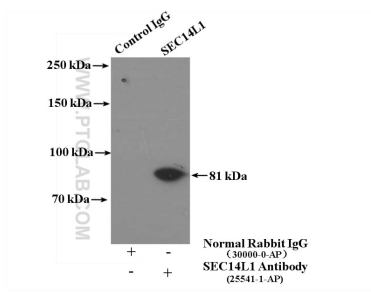
For technical support and original validation data for this product please contact:

T: 1 (888) 4PTGLAB (1-888-478-4522) (toll free  
in USA), or 1(312) 455-8498 (outside USA)

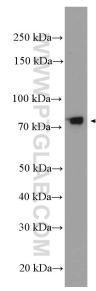
E: [proteintech@ptglab.com](mailto:proteintech@ptglab.com)  
W: [ptglab.com](http://ptglab.com)

This product is exclusively available under Proteintech Group brand and is not available to purchase from any other manufacturer.

## Données de validation sélectionnées



IP Result of anti-SEC14L1 (IP:25541-1-AP, 4 $\mu$ g;  
Detection:25541-1-AP 1:300) with HEK-293 cells  
lysate 2600 $\mu$ g.



Y79 cells were subjected to SDS PAGE followed by  
western blot with 25541-1-AP (SEC14L1 Antibody)  
at dilution of 1:300 incubated at room temperature  
for 1.5 hours.