

À des fins de recherche uniquement

Anticorps Polyclonal de lapin anti-MCP1



Numéro de catalogue: 25542-1-AP

53 Publications

Informations de base

Numéro de catalogue: 25542-1-AP	Numéro d'acquisition GenBank: BC009716	Méthode de purification: Purification par affinité contre l'antigène
Taille: 150ul, Concentration: 600 µg/ml by Nanodrop;	Identification du gène (NCBI): 6347	Dilutions recommandées: WB 1:1000-1:4000 IHC 1:50-1:500
Hôte: Lapin	Nom complet: chemokine (C-C motif) ligand 2	
Isotype: IgG	MW calculé: 99 aa, 11 kDa	
Immunogen Catalog Number: AG10601	MW observés: 11 kDa	

Applications

Applications testées:

FC, IHC, WB, ELISA

Demandes citées:

Blocking, IF, IHC

Spécificité de l'espèce:

Humain

Espèces citées:

Humain, Lapin

Contrôles positifs:

WB : PMA, LPS and Brefeldin A treated THP-1 cells,

IHC : tissu de cancer du sein humain, tissu de cancer du foie humain, tissu de cancer du pancréas humain

Remarque-IHC: il est suggéré de démasquer l'antigène avec un tampon de TE buffer pH 9,0; (*) À défaut, le démasquage de l'antigène peut être effectué avec un tampon citrate pH 6,0.

Informations générales

Monocyte chemoattractant protein 1 (MCP1; also known as CCL2), is a chemokine that can be expressed in monocytes, macrophages, and endothelial cells, and belongs to the CC subfamily of chemokines. Chemokines are a superfamily of secreted proteins involved in immunoregulatory and inflammatory processes. Research has shown that the expression of MCP1 increases in the serum of patients with acute myocarditis. MCP1 is up-regulated in many types of CNS injury, including ischemia, hemorrhage, trauma, infection, hypoxia, and peripheral nerve axotomy. MCP1 has also been implicated in the pathogenesis of diseases characterized by monocytic infiltrates, such as psoriasis, rheumatoid arthritis, and atherosclerosis.

Publications notables

Autrice	Pubmed ID	Journal	Application
Yun Zhu	31660067	Theranostics	IHC
Xiaojuan Ma	32900249	J Recept Signal Transduct Res	WB
Jiajun Chen	36367498	Life Sci	IHC,IF

Stockage

Stockage:

Stocker à -20°C. Stable pendant un an après l'expédition.

Tampon de stockage:

PBS avec azoture de sodium à 0,02 % et glycérol à 50 % pH 7,3

L'aliquotage n'est pas nécessaire pour le stockage à -20C

*** Les 20ul contiennent 0,1% de BSA.

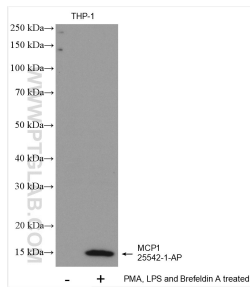
For technical support and original validation data for this product please contact:

T: 1 (888) 4PTGLAB (1-888-478-4522) (toll free in USA), or 1(312) 455-8498 (outside USA)

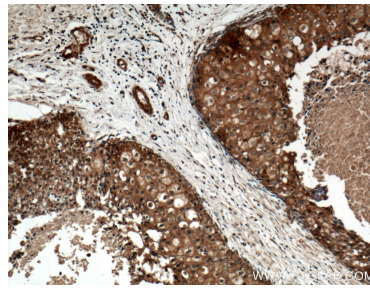
E: proteintech@ptglab.com
W: ptglab.com

This product is exclusively available under Proteintech Group brand and is not available to purchase from any other manufacturer.

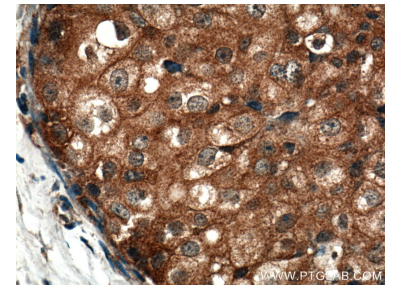
Données de validation sélectionnées



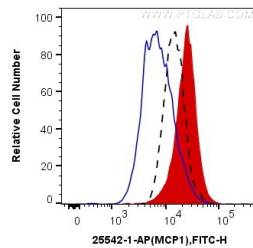
Untreated THP-1 cells, THP-1 cells (treated with 50 nM PMA and 5 ug/ml LPS for 24 hours, with addition of 300ng/ml Brefeldin A for the last 3 hours.) were subjected to SDS PAGE followed by western blot with 25542-1-AP (MCP1 antibody) at dilution of 1:2000 incubated at room temperature for 1.5 hours.



Immunohistochemical analysis of paraffin-embedded human breast cancer tissue slide using 25542-1-AP (MCP1 antibody) at dilution of 1:200 (under 10x lens).



Immunohistochemical analysis of paraffin-embedded human breast cancer tissue slide using 25542-1-AP (MCP1 antibody) at dilution of 1:200 (under 40x lens).



1X10⁶ HP-1 cells untreated (dashed lines) or treated with PMA (red) were intracellularly stained with 0.4 ug Anti-Human MCP1 (25542-1-AP) and CoraLite@488-Conjugated AffiniPure Goat Anti-Rabbit IgG(H+L) at dilution 1:1000 (red), or 0.4 ug Control Antibody (Blue). Cells were fixed with 4% PFA and permeabilized with Flow Cytometry Perm Buffer (PF00011-C).