

À des fins de recherche uniquement

Anticorps Polyclonal de lapin anti-SCML2



Numéro de catalogue: 25544-1-AP **Phare**

Informations de base

Numéro de catalogue:
25544-1-AP

Taille:
150ul, Concentration: 1000 µg/ml by
Nanodrop and 480 µg/ml by Bradford
method using BSA as the standard;

Hôte:
Lapin

Isotype:
IgG

Immunogen Catalog Number:
AG22271

Numéro d'acquisition GenBank:
BC064617

Identification du gène (NCBI):
10389

Nom complet:
sex comb on midleg-like 2
(Drosophila)

MW calculé
700 aa, 77 kDa

MW observés:
70 kDa, 80 kDa

Méthode de purification:
Purification par affinité contre
l'antigène

Dilutions recommandées:
WB 1:500-1:1000
IP 0.5-4.0 ug for IP and 1:200-1:1000
for WB
IF 1:20-1:200

Applications

Applications testées:
IF, IP, WB, ELISA

Spécificité de l'espèce:
Humain, souris

Contrôles positifs:

WB : cellules HEK-293, cellules K-562, tissu testiculaire
de souris

IP : cellules HEK-293,

IF : cellules HEK-293,

Informations générales

The human SCML2 gene, a mammalian homologue of the Drosophila PcG protein SCM, encodes two protein isoforms: SCML2A that is bound to chromatin and SCML2B that is predominantly nucleoplasmic (PMID: 24358021). Polycomb repressive complex-1 (PRC1) is essential for the epigenetic regulation of gene expression. SCML2 is a Polycomb-group protein that associates with PRC1. SCML2 participates in the epigenetic control of transcription directly and in cooperation with PRC1 (PMID: 24986859).

Stockage

Stockage:

Stocker à -20°C. Stable pendant un an après l'expédition.

Tampon de stockage:

PBS avec azoture de sodium à 0,02 % et glycérol à 50 % pH 7,3

L'aliquotage n'est pas nécessaire pour le stockage à -20C

***** Les 20ul contiennent 0,1% de BSA.**

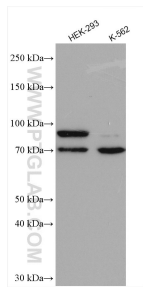
For technical support and original validation data for this product please contact:

T: 1 (888) 4PTGLAB (1-888-478-4522) (toll free
in USA), or 1(312) 455-8498 (outside USA)

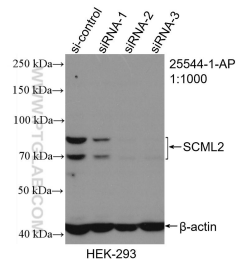
E: proteintech@ptglab.com
W: ptglab.com

This product is exclusively available under Proteintech Group brand and is not available to purchase from any other manufacturer.

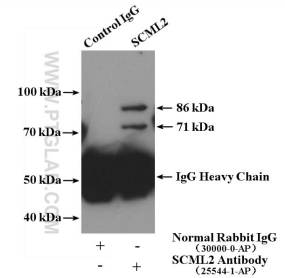
Données de validation sélectionnées



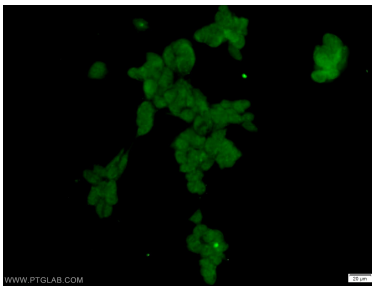
Various lysates were subjected to SDS PAGE followed by western blot with 25544-1-AP (SCML2 antibody) at dilution of 1:800 incubated at room temperature for 1.5 hours.



WB result of SCML2 antibody (25544-1-AP; 1:1000; incubated at room temperature for 1.5 hours) with sh-Control and sh-SCML2 transfected HEK-293 cells.



IP Result of anti-SCML2 (IP:25544-1-AP, 4ug; Detection:25544-1-AP 1:300) with HEK-293 cells lysate 2400ug.



Immunofluorescent analysis of HEK-293 cells using 25544-1-AP (SCML2 antibody) at dilution of 1:50 and Alexa Fluor 488-conjugated AffiniPure Goat Anti-Rabbit IgG(H+L).