

À des fins de recherche uniquement

# Anticorps Polyclonal de lapin anti-cleaved-Caspase 3



Numéro de catalogue: 25546-1-AP

126 Publications

## Informations de base

Numéro de catalogue:

25546-1-AP

Taille:

150ul, Concentration: 320 µg/ml by Bradford method using BSA as the standard;

Hôte:

Lapin

Isotype:

IgG

Numéro d'acquisition GenBank:

NM\_032991

Identification du gène (NCBI):

836

Nom complet:

caspase 3, apoptosis-related cysteine peptidase

MW calculé

32 kDa

MW observés:

17 kDa

Méthode de purification:

Purification par affinité contre l'antigène

Dilutions recommandées:

WB 1:500-1:1000

IP 0.5-4.0 ug for IP and 1:200-1:1000 for WB

IHC 1:20-1:200

IF 1:20-1:200

## Applications

Applications testées:

FC, IF, IHC, IP, WB, ELISA

Demandes citées:

FC, IF, IHC, WB

Spécificité de l'espèce:

Humain, rat, souris

Espèces citées:

Humain, rat, souris, Hamster

Contrôles positifs:

WB : cellules HepG2 traitées à la tunicamycine, cellules HeLa traitées à la tunicamycine, cellules Jurkat traitées à la staurosporine

IP : cellules Jurkat,

IHC : tissu de muscle squelettique humain,

IF : cellules HepG2,

**Remarque-IHC: il est suggéré de démasquer l'antigène avec un tampon de TE buffer pH 9,0; (\*) À défaut, le démasquage de l'antigène peut être effectué avec un tampon citrate pH 6,0.**

## Informations générales

Caspase 3, also named as CPP32, SCA-1 and Apopain, belongs to the peptidase C14A family. Caspase 3 is involved in the activation cascade of caspases responsible for apoptosis execution. At the onset of apoptosis it proteolytically cleaves poly(ADP-ribose) polymerase (PARP) at a '216-Asp-I-Gly-217' bond. Caspase 3 cleaves and activates sterol regulatory element binding proteins (SREBPs) between the basic helix-loop-helix leucine zipper domain and the membrane attachment domain. Cleaves and activates caspase-6, -7 and -9. CASP3 is involved in the cleavage of huntingtin. The antibody can recognize active-caspase 3.

## Publications notables

Autrice	Pubmed ID	Journal	Application
Samana Batool	30274346	Int J Mol Sci	WB
Genquan Yue	31702026	Mol Med Rep	WB
Kate D Meyer	31548708	Nat Methods	

## Stockage

Stockage:

Stocker à -20°C. Stable pendant un an après l'expédition.

Tampon de stockage:

PBS avec azoture de sodium à 0,02 % et glycérol à 50 % pH 7,3

L'aliquotage n'est pas nécessaire pour le stockage à -20C

\*\*\* Les 20ul contiennent 0,1% de BSA.

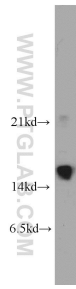
For technical support and original validation data for this product please contact:

T: 1 (888) 4PTGLAB (1-888-478-4522) (toll free in USA), or 1(312) 455-8498 (outside USA)

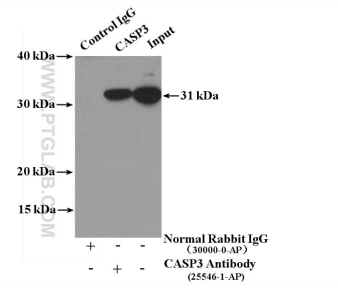
E: proteintech@ptglab.com  
W: ptglab.com

This product is exclusively available under Proteintech Group brand and is not available to purchase from any other manufacturer.

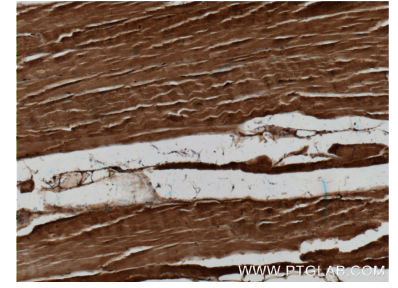
## Données de validation sélectionnées



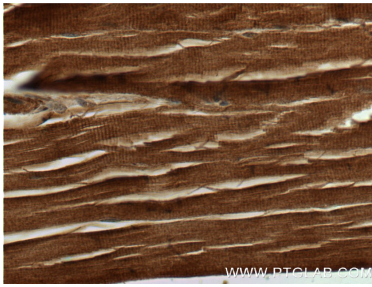
Tunicamycin treated HepG2 cells were subjected to SDS PAGE followed by western blot with 25546-1-AP (Caspase 3 Antibody) at dilution of 1:600 incubated at room temperature for 1.5 hours.



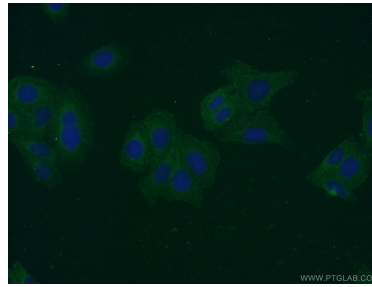
IP Result of anti-Caspase 3 (IP:25546-1-AP, 4ug; Detection:25546-1-AP 1:300) with Jurkat cells lysate 3200ug.



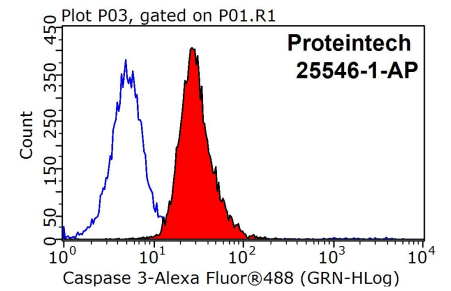
Immunohistochemical analysis of paraffin-embedded human skeletal muscle tissue slide using 25546-1-AP (Caspase 3 Antibody) at dilution of 1:50 (under 10x lens).



Immunohistochemical analysis of paraffin-embedded human skeletal muscle tissue slide using 25546-1-AP (Caspase 3 Antibody) at dilution of 1:50 (under 40x lens).



Immunofluorescent analysis of HepG2 cells using 25546-1-AP (Caspase 3 Antibody) at dilution of 1:50 and Alexa Fluor 488-conjugated AffiniPure Goat Anti-Rabbit IgG(H+L).



1X10<sup>6</sup> HeLa cells were stained with 0.2ug Caspase 3 antibody (25546-1-AP, red) and control antibody (blue). Fixed with 90% MeOH blocked with 3% BSA (30 min). Alexa Fluor 488-conjugated AffiniPure Goat Anti-Rabbit IgG(H+L) with dilution 1:1000.