

À des fins de recherche uniquement

# Anticorps Polyclonal de lapin anti-LRRC52



Numéro de catalogue: 25584-1-AP

## Informations de base

Numéro de catalogue: 25584-1-AP	Numéro d'acquisition GenBank: BC132981	Méthode de purification: Purification par affinité contre l'antigène
Taille: 150ul, Concentration: 730 µg/ml by Nanodrop;	Identification du gène (NCBI): 440699	Dilutions recommandées: WB 1:500-1:1000
Hôte: Lapin	Nom complet: leucine rich repeat containing 52	
Isotype: IgG	MW calculé: 313 aa, 35 kDa	
Immunogen Catalog Number: AG22354	MW observés: 45 kDa	

## Applications

Applications testées:  
WB, ELISA  
Spécificité de l'espèce:  
Humain, rat, souris

Contrôles positifs:

WB : tissu de muscle squelettique de souris, tissu de muscle squelettique de rat

## Informations générales

LRRC52 (leucine-rich repeat-containing protein 52) belongs to the gamma family of the BK channel accessory subunits, which potentially regulate the channel's gating properties (PMID: 22547800). It is dominantly expressed in testis and skeletal muscle, with much lower expression in several other tissues including placenta, kidney, lung, and some glands. LRRC52 has been reported as a Slo3 auxiliary subunit that helps define the specific alkalization dependence of K<sub>Sper</sub> activation. LRRC52 has a calcular molecular weight of 35 kDa. This polyclonal antibody raised against 24-244aa of human LRRC52 reveals a band of 45 kDa, which is consistent with the molecular weight of glycosylated form of LRRC52 (PMID: 22084117).

## Stockage

Stockage:  
Stocker à -20°C. Stable pendant un an après l'expédition.  
Tampon de stockage:  
PBS avec azoture de sodium à 0,02 % et glycérol à 50 % pH 7,3  
L'aliquotage n'est pas nécessaire pour le stockage à -20C

\*\*\* Les 20ul contiennent 0,1% de BSA.

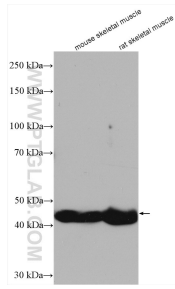
For technical support and original validation data for this product please contact:

T: 1 (888) 4PTGLAB (1-888-478-4522) (toll free in USA), or 1(312) 455-8498 (outside USA)

E: [proteintech@ptglab.com](mailto:proteintech@ptglab.com)  
W: [ptglab.com](http://ptglab.com)

This product is exclusively available under Proteintech Group brand and is not available to purchase from any other manufacturer.

## Données de validation sélectionnées



Various lysates were subjected to SDS PAGE followed by western blot with 25584-1-AP (LRRC52 antibody) at dilution of 1:800 incubated at room temperature for 1.5 hours.