

À des fins de recherche uniquement

Anticorps Polyclonal de lapin anti-PRDM15



Numéro de catalogue: 25590-1-AP **Phare**

Informations de base

Numéro de catalogue:
25590-1-AP

Taille:
150ul, Concentration: 1000 µg/ml by Nanodrop and 413 µg/ml by Bradford method using BSA as the standard;

Hôte:
Lapin

Isotype:
IgG

Immunogen Catalog Number:
AG22296

Numéro d'acquisition GenBank:
BC067102

Identification du gène (NCBI):
63977

Nom complet:
PR domain containing 15

MW calculé
1507 aa, 169 kDa

MW observés:
169 kDa

Méthode de purification:
Purification par affinité contre l'antigène

Dilutions recommandées:
WB 1:200-1:1000
IP 0.5-4.0 ug for IP and 1:500-1:1000 for WB

Applications

Applications testées:
IP, WB, ELISA

Spécificité de l'espèce:
Humain

Contrôles positifs:

WB : cellules MCF-7, cellules Jurkat

IP : cellules MCF-7,

Informations générales

The PR-domain containing proteins (PRDMs) have a common involvement in the modulation of gene activities. A PR-domain family member usually produces two products, called PR-plus and PR-minus, which differ by the presence or absence of the PR domain, respectively. The PR-plus product is underexpressed or disrupted in cancer cells, whereas the PR-minus product is present or overexpressed in cancer cells. This imbalance in the amount of the two products, which is a result of either genetic or epigenetic events, appears to be a determining factor of malignancy. PRDM15 (PR domain-containing protein 15), also known as PFM15 or ZNF298, is a 1507 amino acid protein belonging to the PRDM family. Localizing to the nucleus, PRDM15 contains sixteen C2H2-type zinc fingers and one SET domain. It is believed to participate in transcriptional regulation and may be involved in cell differentiation and tumorigenesis. PRDM15 exists several isoform and molecular weight of respective isoform is 169 kDa, 135kda, 62kDa.

Stockage

Stockage:

Stocker à -20°C. Stable pendant un an après l'expédition.

Tampon de stockage:

PBS avec azoture de sodium à 0,02 % et glycérol à 50 % pH 7,3

L'aliquotage n'est pas nécessaire pour le stockage à -20C

*** Les 20ul contiennent 0,1% de BSA.

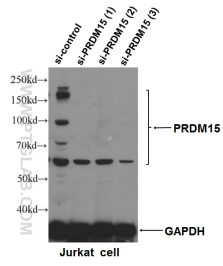
For technical support and original validation data for this product please contact:

T: 1 (888) 4PTGLAB (1-888-478-4522) (toll free in USA), or 1(312) 455-8498 (outside USA)

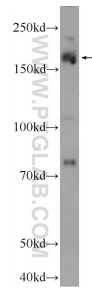
E: proteintech@ptglab.com
W: ptglab.com

This product is exclusively available under Proteintech Group brand and is not available to purchase from any other manufacturer.

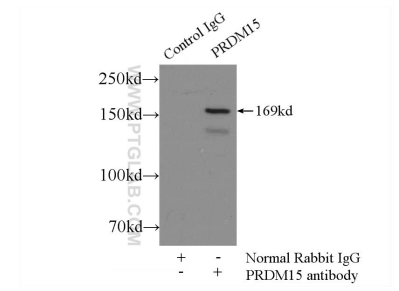
Données de validation sélectionnées



WB result of PRDM15 (25590-1-AP, 1:500) with si-control and si-PRDM15 transfected Jurkat cells.



MCF-7 cells were subjected to SDS PAGE followed by western blot with 25590-1-AP (PRDM15 Antibody) at dilution of 1:300 incubated at room temperature for 1.5 hours.



IP Result of anti-PRDM15 (IP:25590-1-AP, 5ug; Detection:25590-1-AP 1:500) with MCF-7 cells lysate 2500ug.