

À des fins de recherche uniquement

Anticorps Polyclonal de lapin anti-NFU1



Numéro de catalogue: 25598-1-AP

Informations de base

Numéro de catalogue:
25598-1-AP

Taille:
150ul, Concentration: 550 µg/ml by
Nanodrop and 293 µg/ml by Bradford
method using BSA as the standard;

Hôte:
Lapin

Isotype:
IgG

Immunogen Catalog Number:
AG22343

Numéro d'acquisition GenBank:
BC113692

Identification du gène (NCBI):
27247

Nom complet:
NFU1 iron-sulfur cluster scaffold
homolog (*S. cerevisiae*)

MW calculé
254 aa, 28 kDa

MW observés:
23-28 kDa

Méthode de purification:
Purification par affinité contre
l'antigène

Dilutions recommandées:
WB 1:500-1:2000
IP 0.5-4.0 ug for IP and 1:500-1:2000
for WB
IF 1:10-1:100

Applications

Applications testées:
IF, IP, WB, ELISA

Spécificité de l'espèce:
Humain, rat, souris

Contrôles positifs:

WB : tissu de cervelet de souris, tissu cérébral de
souris, tissu testiculaire de souris

IP : tissu cérébral de souris,

IF : cellules HepG2,

Informations générales

NFU1, also named as HIRA-interacting protein 5 or CGI-33, is a 254 amino acid protein, which belongs to the NifU family. NFU1 localizes in the Mitochondrion. NFU1 is widely expressed in adult tissues. NFU1, as an Iron-sulfur cluster scaffold protein, which can assemble clusters and deliver them to target proteins. It has an association with Multiple mitochondrial dysfunctions syndrome 1.

Stockage

Stockage:

Stocker à -20°C. Stable pendant un an après l'expédition.

Tampon de stockage:

PBS avec azoture de sodium à 0,02 % et glycérol à 50 % pH 7,3

L'aliquotage n'est pas nécessaire pour le stockage à -20C

*** Les 20ul contiennent 0,1% de BSA.

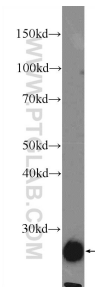
For technical support and original validation data for this product please contact:

T: 1 (888) 4PTGLAB (1-888-478-4522) (toll free
in USA), or 1(312) 455-8498 (outside USA)

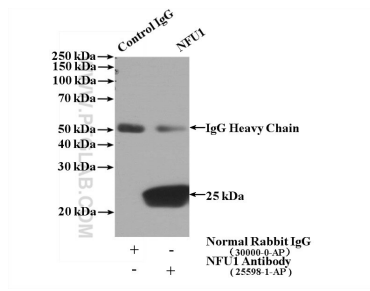
E: proteintech@ptglab.com
W: ptglab.com

This product is exclusively available under Proteintech Group brand and is not available to purchase from any other manufacturer.

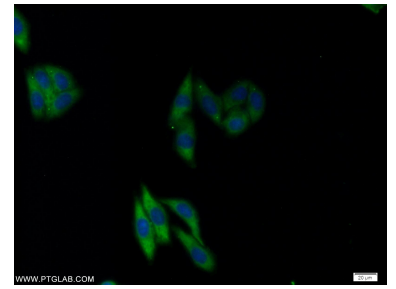
Données de validation sélectionnées



mouse cerebellum tissue were subjected to SDS PAGE followed by western blot with 25598-1-AP (NFU1 Antibody) at dilution of 1:1000 incubated at room temperature for 1.5 hours.



IP Result of anti-NFU1 (IP:25598-1-AP, 4ug; Detection:25598-1-AP 1:1000) with mouse brain tissue lysate 4000ug.



Immunofluorescent analysis of HepG2 cells using 25598-1-AP (NFU1 antibody) at dilution of 1:25 and Alexa Fluor 488-conjugated AffiniPure Goat Anti-Rabbit IgG(H+L).