

À des fins de recherche uniquement

Anticorps Polyclonal de lapin anti-CHCHD3



Numéro de catalogue: 25625-1-AP

24 Publications

Informations de base

Numéro de catalogue:

25625-1-AP

Taille:

150ul, Concentration: 600 µg/ml by Nanodrop and 340 µg/ml by Bradford method using BSA as the standard;

Hôte:

Lapin

Isotype:

IgG

Immunogen Catalog Number:

AG22579

Numéro d'acquisition GenBank:

BC014839

Identification du gène (NCBI):

54927

Nom complet:

coiled-coil-helix-coiled-coil-helix domain containing 3

MW calculé

227 aa, 26 kDa

MW observés:

26 kDa

Méthode de purification:

Purification par affinité contre l'antigène

Dilutions recommandées:

WB 1:4000-1:12000

IP 0.5-4.0 ug for IP and 1:500-1:2000 for WB

IHC 1:50-1:500

IF 1:50-1:500

Applications

Applications testées:

IF, IHC, IP, WB, ELISA

Demandes citées:

IF, WB

Spécificité de l'espèce:

Humain, souris

Espèces citées:

Humain, souris

Remarque-IHC: il est suggéré de démasquer l'antigène avec un tampon de TE buffer pH 9,0; (*) À défaut, 'le démasquage de l'antigène peut être 'effectué avec un tampon citrate pH 6,0.

Contrôles positifs:

WB : cellules HEK-293, cellules A431, cellules HeLa, cellules Jurkat, cellules NIH/3T3, tissu hépatique de souris, tissu placentaire humain

IP : cellules HeLa,

IHC : tissu hépatique humain, tissu cardiaque humain

IF : cellules HepG2,

Informations générales

CHCHD3, initially identified as a substrate for cAMP-dependent protein kinase (PKA), is a ubiquitous protein in the mitochondria and plays a prominent role in maintaining cristae integrity and mitochondrial function. In mitochondria, ChChd3 is predominantly localized to the inner membrane (IM), facing toward the intermembrane space (IMS), and is part of the large protein complex now called as MINOS (mitochondrial inner membrane organizing system), or MIB (mitochondrial intermembrane space bridging) CHCHD3 is highly conserved in mammals with human and mouse protein sharing 92% sequence similarity.

Publications notables

Autrice	Pubmed ID	Journal	Application
Yutong Shang	36104602	Acta Neuropathol	WB
Takahiro Yoshinaka	31522117	iScience	WB
Foteini Violitzi	31550165	J Proteome Res	WB

Stockage

Stockage:

Stocker à -20°C. Stable pendant un an après l'expédition.

Tampon de stockage:

PBS avec azoture de sodium à 0,02 % et glycérol à 50 % pH 7,3

L'aliquotage n'est pas nécessaire pour le stockage à -20C

*** Les 20ul contiennent 0,1% de BSA.

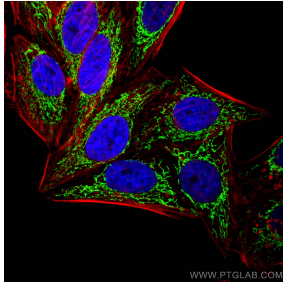
For technical support and original validation data for this product please contact:

T: 1 (888) 4PTGLAB (1-888-478-4522) (toll free in USA), or 1(312) 455-8498 (outside USA)

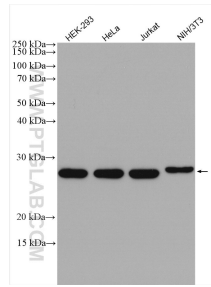
E: proteintech@ptglab.com
W: ptglab.com

This product is exclusively available under Proteintech Group brand and is not available to purchase from any other manufacturer.

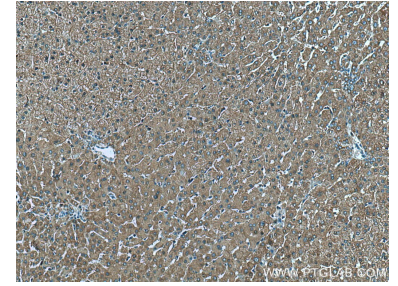
Données de validation sélectionnées



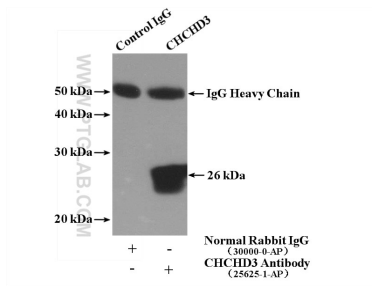
Immunofluorescent analysis of (4% PFA) fixed HepG2 cells using CHCHD3 antibody (25625-1-AP) at dilution of 1:200 and CoraLite®488-Conjugated AffiniPure Goat Anti-Rabbit IgG(H+L), CL594-Phalloidin (red).



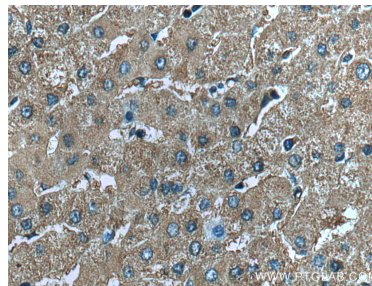
Various lysates were subjected to SDS PAGE followed by western blot with 25625-1-AP (CHCHD3 antibody) at dilution of 1:8000 incubated at room temperature for 1.5 hours.



Immunohistochemical analysis of paraffin-embedded human liver tissue slide using 25625-1-AP (CHCHD3 antibody) at dilution of 1:200 (under 10x lens). Heat mediated antigen retrieval with Tris-EDTA buffer (pH 9.0).



IP Result of anti-CHCHD3 (IP:25625-1-AP, 4ug; Detection:25625-1-AP 1:1000) with HeLa cells lysate 2600ug.



Immunohistochemical analysis of paraffin-embedded human liver tissue slide using 25625-1-AP (CHCHD3 antibody) at dilution of 1:200 (under 40x lens). Heat mediated antigen retrieval with Tris-EDTA buffer (pH 9.0).