

À des fins de recherche uniquement

# Anticorps Polyclonal de lapin anti-PKM



Numéro de catalogue: 25659-1-AP

Phare

1 Publications

## Informations de base

Numéro de catalogue:

25659-1-AP

Taille:

150ul, Concentration: 550 µg/ml by Nanodrop and 333 µg/ml by Bradford method using BSA as the standard;

Hôte:

Lapin

Isotype:

IgG

Immunogen Catalog Number:

AG20270

Numéro d'acquisition GenBank:

BC000481

Identification du gène (NCBI):

5315

Nom complet:

PKM pyruvate kinase, muscle

MW calculé

58 kDa

MW observés:

58 kDa

Méthode de purification:

Purification par affinité contre l'antigène

Dilutions recommandées:

WB 1:1000-1:4000

IHC 1:100-1:400

IF 1:200-1:800

## Applications

Applications testées:

IF, IHC, WB, ELISA

Demandes citées:

IP, WB

Spécificité de l'espèce:

Humain

Espèces citées:

Humain

**Remarque-IHC: il est suggéré de démasquer l'antigène avec un tampon de TE buffer pH 9,0; (\*) A défaut, 'le démasquage de l'antigène peut être 'effectué avec un tampon citrate pH 6,0.**

Contrôles positifs:

**WB** : cellules HeLa, cellules COLO 320, cellules HEK-293, cellules KEK293, cellules MCF-7, cellules NIH/3T3, cellules SMMC-7721, tissu cardiaque de rat, tissu cardiaque de souris, tissu cérébral de rat, tissu cérébral de souris, tissu de muscle squelettique de rat, tissu de muscle squelettique de souris

**IHC** : tissu de cancer du foie humain,

**IF** : cellules HeLa,

## Informations générales

PKM, also named as OIP3, PK2, PK3, PK-M1/2, p58, THBP1, CTHBP and Tumor M2-PK, belongs to the pyruvate kinase family. It is glycolytic enzyme that catalyzes the transfer of a phosphoryl group from phosphoenolpyruvate (PEP) to ADP, generating ATP. It stimulates POU5F1-mediated transcriptional activation. PKM plays a general role in caspase independent cell death of tumor cells. PKM has 2 isoforms named as PKM1/M2. The activity of the M2 isoform (but not the M1 isoform) can be inhibited by tyrosine kinase signalling in tumour cells. The primary pyruvate kinase isoform before tumour development is PK-M1; however, the primary isoform from four independent tumours is PK-M2. (PMID:18337823). This antibody can recognize both PK-M1 and PK-M2.

## Publications notables

Autrice	Pubmed ID	Journal	Application
Guang Yang	33372411	EMBO Rep	WB,IP

## Stockage

Stockage:

Stocker à -20°C. Stable pendant un an après l'expédition.

Tampon de stockage:

PBS avec azote de sodium à 0,02 % et glycérol à 50 % pH 7,3

L'aliquotage n'est pas nécessaire pour le stockage à -20C

\*\*\* Les 20ul contiennent 0,1% de BSA.

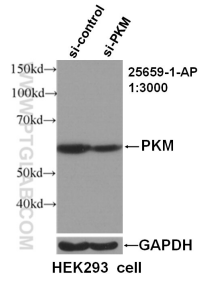
For technical support and original validation data for this product please contact:

T: 1 (888) 4PTGLAB (1-888-478-4522) (toll free in USA), or 1(312) 455-8498 (outside USA)

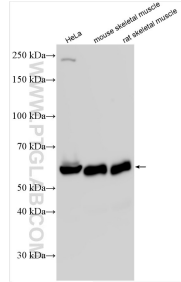
E: proteintech@ptglab.com  
W: ptglab.com

This product is exclusively available under Proteintech Group brand and is not available to purchase from any other manufacturer.

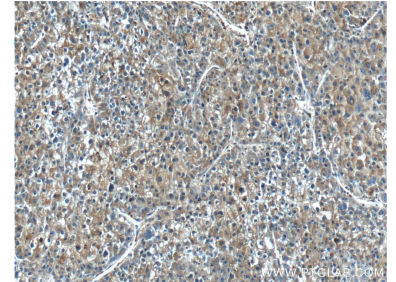
## Données de validation sélectionnées



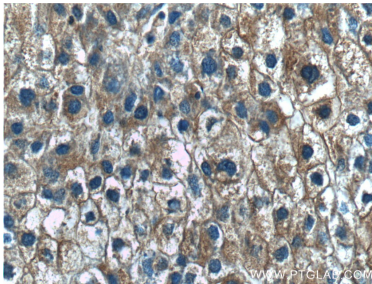
WB result of PKM antibody (25659-1-AP, 1:3000) with si-control and si-PKM transfected HEK293 cell.



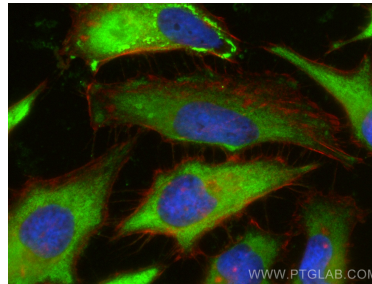
Various lysates were subjected to SDS PAGE followed by western blot with 25659-1-AP (PKM antibody) at dilution of 1:2000 incubated at room temperature for 1.5 hours.



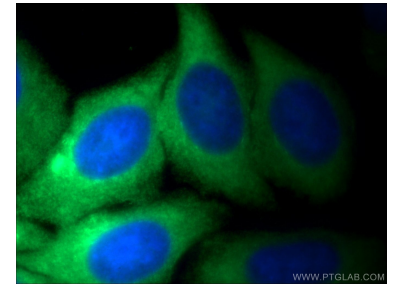
Immunohistochemical analysis of paraffin-embedded human liver cancer tissue slide using 25659-1-AP (PKM Antibody) at dilution of 1:200 (under 10x lens).



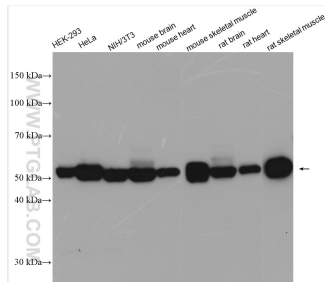
Immunohistochemical analysis of paraffin-embedded human liver cancer tissue slide using 25659-1-AP (PKM Antibody) at dilution of 1:200 (under 40x lens).



Immunofluorescent analysis of (-20°C Ethanol) fixed HeLa cells using PKM antibody (25659-1-AP) at dilution of 1:400 and CoraLite® 488-Conjugated AffiniPure Goat Anti-Rabbit IgG(H+L), CL594-phalloidin (red).



Immunofluorescent analysis of HeLa cells using 25659-1-AP (PKM antibody) at dilution of 1:150 and Alexa Fluor 488-conjugated AffiniPure Goat Anti-Rabbit IgG(H+L).



Various lysates were subjected to SDS PAGE followed by western blot with 25659-1-AP (PKM antibody) at dilution of 1:1500 incubated at room temperature for 1.5 hours.