

À des fins de recherche uniquement

Anticorps Polyclonal de lapin anti-SPTBN1



Numéro de catalogue: 25681-1-AP

Informations de base

Numéro de catalogue: 25681-1-AP	Numéro d'acquisition GenBank: BC137282	Méthode de purification: Purification par affinité contre l'antigène
Taille: 150ul, Concentration: 500 µg/ml by Nanodrop and 220 µg/ml by Bradford method using BSA as the standard;	Identification du gène (NCBI): 6711	Dilutions recommandées: WB 1:500-1:3000 IF 1:20-1:200
Hôte: Lapin	Nom complet: spectrin, beta, non-erythrocytic 1	
Isotype: IgG	MW calculé: 2364 aa, 275 kDa	
Immunogen Catalog Number: AG22459	MW observés: 275 kDa	

Applications

Applications testées: IF, WB, ELISA	Contrôles positifs:
Spécificité de l'espèce: Humain, souris	WB: cellules Caco-2, cellules HEK-293, cellules SH-SY5Y, tissu cardiaque de souris
	IF: cellules HEK-293,

Informations générales

SPTBN1 is the non-erythrocytic form of β -spectrin or β -fodrin. Spectrins are members of the superfamily of F-actin cross linking proteins that are important as scaffolding proteins for protein sorting, cell adhesion, and migration. Reduced expression of SPTBN1 has been found to correlate with shorter survival of patients with hepatocellular cancer, pancreatic cancer and other malignancies of the gastrointestinal tract, suggesting tumor suppression ability of this protein.

Stockage

Stockage:
Stocker à -20°C. Stable pendant un an après l'expédition.
Tampon de stockage:
PBS avec azoture de sodium à 0,02 % et glycérol à 50 % pH 7,3
L'aliquotage n'est pas nécessaire pour le stockage à -20C

*** Les 20ul contiennent 0,1% de BSA.

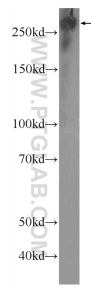
For technical support and original validation data for this product please contact:

T: 1 (888) 4PTGLAB (1-888-478-4522) (toll free in USA), or 1(312) 455-8498 (outside USA)

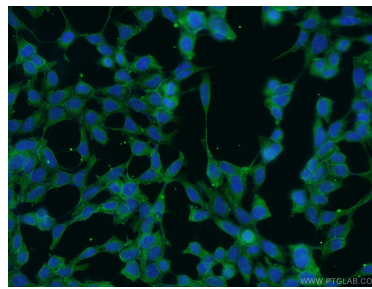
E: proteintech@ptglab.com
W: ptglab.com

This product is exclusively available under Proteintech Group brand and is not available to purchase from any other manufacturer.

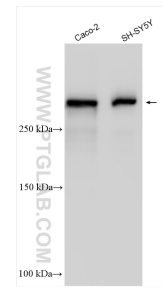
Données de validation sélectionnées



HEK-293 cells were subjected to SDS PAGE followed by western blot with 25681-1-AP (SPTBN1 Antibody) at dilution of 1:600 incubated at room temperature for 1.5 hours.



Immunofluorescent analysis of HEK-293 cells using 25681-1-AP (SPTBN1 antibody) at dilution of 1:50 and Alexa Fluor 488-conjugated AffiniPure Goat Anti-Rabbit IgG(H+L).



Various lysates were subjected to SDS PAGE followed by western blot with 25681-1-AP (SPTBN1 antibody) at dilution of 1:1500 incubated at room temperature for 1.5 hours.