

À des fins de recherche uniquement

Anticorps Polyclonal de lapin anti-MCEMP1



Numéro de catalogue: 25700-1-AP

Informations de base

Numéro de catalogue: 25700-1-AP	Numéro d'acquisition GenBank: BC104798	Méthode de purification: Purification par affinité contre l'antigène
Taille: 150ul , Concentration: 800 µg/ml by Nanodrop;	Identification du gène (NCBI): 199675	Dilutions recommandées: WB 1:1000-1:6000 IHC 1:50-1:500
Hôte: Lapin	Nom complet: chromosome 19 open reading frame 59	
Isotype: IgG	MW observés: 22 kDa	
Immunogen Catalog Number: AG22616		

Applications

Applications testées:
IHC, WB, ELISA

Spécificité de l'espèce:
Humain, souris

Remarque-IHC: il est suggéré de démasquer l'antigène avec un tampon de TE buffer pH 9,0; (*) À défaut, 'le démasquage de l'antigène peut être effectué avec un tampon citrate pH 6,0.

Contrôles positifs:

WB : cellules THP-1, tissu hépatique de souris

IHC : tissu pulmonaire humain, tissu pulmonaire de souris

Informations générales

The MCEMP1 gene contains seven exons and was mapped to human chromosome 19p13.3. The epitope-tagged MCEMP1 has been expressed in mammalian cells and found to be localized to the cellular membrane with its C-terminus extending to the outside of the membrane and N-terminus into the cytoplasmic compartment. An evidently increased expression of mast cell expression membrane protein 1 (MCEMP1) has been observed in stroke patients and its expression independently improved the discrimination of 1-month outcome, suggesting the functionality of peripheral blood expression of MCEMP1 as a biomarker for stroke prognosis. (PMID: 30883005, PMID: 31104315, PMID: 15953541)

Stockage

Stockage:

Stocker à -20°C. Stable pendant un an après l'expédition.

Tampon de stockage:

PBS avec azoture de sodium à 0,02 % et glycérol à 50 % pH 7,3

L'aliquotage n'est pas nécessaire pour le stockage à -20C

***** Les 20ul contiennent 0,1% de BSA.**

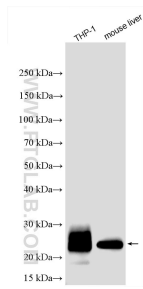
For technical support and original validation data for this product please contact:

T: 1 (888) 4PTGLAB (1-888-478-4522) (toll free in USA), or 1(312) 455-8498 (outside USA)

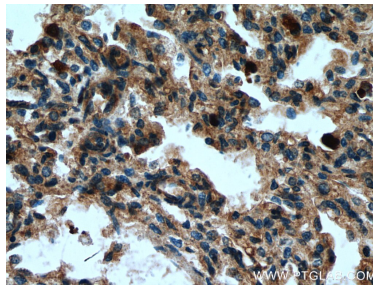
E: proteintech@ptglab.com
W: ptglab.com

This product is exclusively available under Proteintech Group brand and is not available to purchase from any other manufacturer.

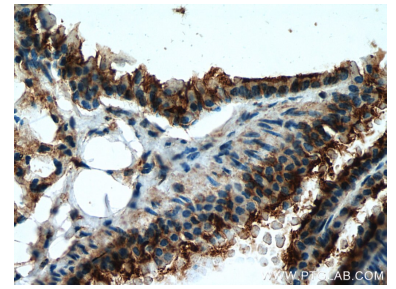
Données de validation sélectionnées



Various lysates were subjected to SDS PAGE followed by western blot with 25700-1-AP (C19orf59 antibody) at dilution of 1:3000 incubated at room temperature for 1.5 hours.



Immunohistochemical analysis of paraffin-embedded human lung tissue slide using 25700-1-AP (C19orf59 antibody) at dilution of 1:200 (under 40x lens). Heat mediated antigen retrieval with Tris-EDTA buffer (pH 9.0).



Immunohistochemical analysis of paraffin-embedded mouse lung tissue slide using 25700-1-AP (C19orf59 antibody) at dilution of 1:200 (under 40x lens). Heat mediated antigen retrieval with Tris-EDTA buffer (pH 9.0).