

À des fins de recherche uniquement

Anticorps Polyclonal de lapin anti-FYCO1



Numéro de catalogue: 25730-1-AP

Phare

1 Publications

Informations de base

Numéro de catalogue:

25730-1-AP

Numéro d'acquisition GenBank:

BC007218

Méthode de purification:

Purification par affinité contre l'antigène

Taille:

150ul, Concentration: 700 µg/ml by Nanodrop and 313 µg/ml by Bradford method using BSA as the standard;

Identification du gène (NCBI):

79443

Dilutions recommandées:

WB 1:500-1:2000

Hôte:

Lapin

Nom complet:

FYVE and coiled-coil domain containing 1

MW calculé

1478 aa, 167 kDa

Isotype:

IgG

MW observés:

167-180 kDa

Immunogen Catalog Number:

AG22803

Applications

Applications testées:

WB, ELISA

Contrôles positifs:

WB : cellules HEK-293T, cellules HeLa, cellules LNCaP

Demandes citées:

IF, WB

Spécificité de l'espèce:

Humain

Informations générales

FYCO1 is a Rab7 adapter protein that is implicated in the microtubule transport of autophagosomes. The encoded protein contains a RUN domain, a FYVE-type zinc finger domain, and Golgi dynamics (GOLD) domain. The encoded protein plays a role in microtubule plus end-directed transport of autophagic vesicles through interactions with the small GTPase Rab7, phosphatidylinositol-3-phosphate (PI3P), the autophagosome marker LC3, and the kinesin KIF5.

Publications notables

Autrice	Pubmed ID	Journal	Application
Wenchang Xiao	33859171	Signal Transduct Target Ther	IF, WB

Stockage

Stockage:

Stocker à -20°C. Stable pendant un an après l'expédition.

Tampon de stockage:

PBS avec azoture de sodium à 0,02 % et glycérol à 50 % pH 7,3

L'aliquotage n'est pas nécessaire pour le stockage à -20C

*** Les 20ul contiennent 0,1% de BSA.

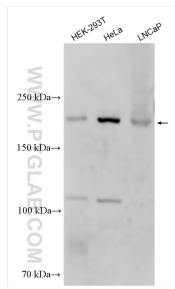
For technical support and original validation data for this product please contact:

T: 1 (888) 4PTGLAB (1-888-478-4522) (toll free in USA), or 1(312) 455-8498 (outside USA)

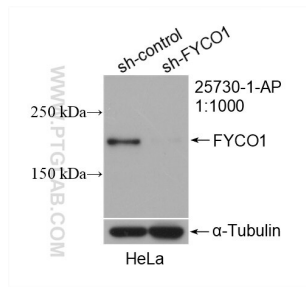
E: proteintech@ptglab.com
W: ptglab.com

This product is exclusively available under Proteintech Group brand and is not available to purchase from any other manufacturer.

Données de validation sélectionnées



Various lysates were subjected to SDS PAGE followed by western blot with 25730-1-AP (FYCO1 antibody) at dilution of 1:1000 incubated at room temperature for 1.5 hours.



WB result of FYCO1 antibody (25730-1-AP; 1:1000; incubated at room temperature for 1.5 hours) with sh-Control and sh-FYCO1 transfected HeLa cells.