

À des fins de recherche uniquement

# Anticorps Polyclonal de lapin anti-DGCR8 N-terminal



Numéro de catalogue: 25835-1-AP

Phare

2 Publications

## Informations de base

Numéro de catalogue:

25835-1-AP

Taille:

150ul, Concentration: 700 µg/ml by Nanodrop and 340 µg/ml by Bradford method using BSA as the standard;

Hôte:

Lapin

Isotype:

IgG

Immunogen Catalog Number:

AG22988

Numéro d'acquisition GenBank:

BC078147

Identification du gène (NCBI):

54487

Nom complet:

DiGeorge syndrome critical region gene 8

MW calculé

773 aa, 86 kDa

MW observés:

88-100 kDa

Méthode de purification:

Purification par affinité contre l'antigène

Dilutions recommandées:

WB 1:500-1:1000

IP 0.5-4.0 ug for IP and 1:500-1:1000 for WB

IF 1:20-1:200

## Applications

Applications testées:

IF, IP, WB, ELISA

Demandes citées:

IF

Spécificité de l'espèce:

Humain

Espèces citées:

bovin, souris

Contrôles positifs:

WB : cellules HeLa, cellules A431

IP : cellules A431,

IF : cellules HeLa,

## Informations générales

DGCR8 is a RNA-binding protein that assists the RNase III enzyme Drosha in the processing of microRNAs (miRNAs), which regulate the expression of a large number of protein-coding genes [PMID: 22580560]. DGCR8, which contains two double-stranded RNA (dsRNA)-binding domains, may be an essential component of the primary miRNAs processing complex, along with Drosha, promoting the processing of primary microRNA to precursor microRNA. It is ubiquitous expressed in human and mouse tissues, and is deleted in DiGeorge syndrome [22323604]. The calculated molecular weight of DGCR8 is 82-86 kDa, but the post-modified DGCR8 is about 120 kDa.

## Publications notables

Autrice	Pubmed ID	Journal	Application
An Yan	36273819	Nucleic Acids Res	IF
Erika E Paulson	36322738	Proc Natl Acad Sci U S A	IF

## Stockage

Stockage:

Stocker à -20°C. Stable pendant un an après l'expédition.

Tampon de stockage:

PBS avec azoture de sodium à 0,02 % et glycérol à 50 % pH 7,3

L'aliquotage n'est pas nécessaire pour le stockage à -20C

\*\*\* Les 20ul contiennent 0,1% de BSA.

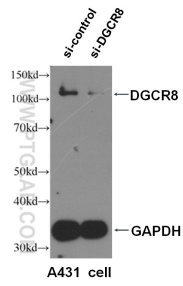
For technical support and original validation data for this product please contact:

T: 1 (888) 4PTGLAB (1-888-478-4522) (toll free in USA), or 1(312) 455-8498 (outside USA)

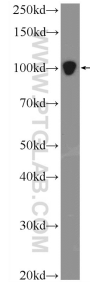
E: proteintech@ptglab.com  
W: ptglab.com

This product is exclusively available under Proteintech Group brand and is not available to purchase from any other manufacturer.

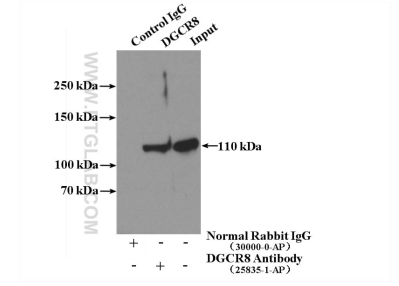
## Données de validation sélectionnées



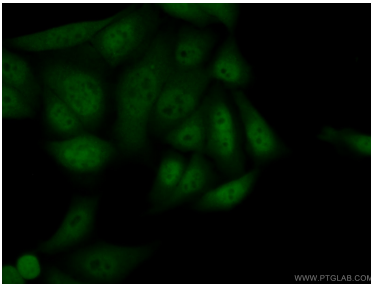
WB result of DGCR8 antibody (25835-1-AP, 1:2000) with si-control and si-DGCR8 transfected A431 cells.



HeLa cells were subjected to SDS PAGE followed by western blot with 25835-1-AP (DGCR8 N-terminal antibody) at dilution of 1:600 incubated at room temperature for 1.5 hours.



IP Result of anti-DGCR8 N-terminal (IP:25835-1-AP, 4ug; Detection:25835-1-AP 1:600) with A431 cells lysate 2800ug.



Immunofluorescent analysis of (10% Formaldehyde) fixed HeLa cells using 25835-1-AP (DGCR8 N-terminal antibody) at dilution of 1:50 and Alexa Fluor 488-conjugated AffiniPure Goat Anti-Rabbit IgG(H+L).