

À des fins de recherche uniquement

# Anticorps Polyclonal de lapin anti-Caspr2



Numéro de catalogue: 25838-1-AP

## Informations de base

<b>Numéro de catalogue:</b> 25838-1-AP	<b>Numéro d'acquisition GenBank:</b> BC113373	<b>Méthode de purification:</b> Purification par affinité contre l'antigène
<b>Taille:</b> 150ul , Concentration: 450 µg/ml by Nanodrop;	<b>Identification du gène (NCBI):</b> 26047	<b>Dilutions recommandées:</b> WB 1:1000-1:4000
<b>Hôte:</b> Lapin	<b>Nom complet:</b> contactin associated protein-like 2	
<b>Isotype:</b> IgG	<b>MW calculé:</b> 1331 aa, 148 kDa	
<b>Immunogen Catalog Number:</b> AG22844	<b>MW observés:</b> 148 kDa	

## Applications

**Applications testées:**  
WB, ELISA

**Spécificité de l'espèce:**  
Humain, porc, rat, souris

**Contrôles positifs:**  
WB : tissu cérébral de souris, tissu cérébral de porc, tissu cérébral de rat

## Informations générales

Caspr2 is a member of the neurexin family which functions in the vertebrate nervous system as cell adhesion molecules and receptors. This protein, like other neurexin proteins, contains epidermal growth factor repeats and laminin G domains. In addition, it includes an F5/8 type C domain, discoidin/neuropilin- and fibrinogen-like domains, thrombospondin N-terminal-like domains and a putative PDZ binding site. This protein is localized at the juxtaparanodes of myelinated axons, and mediates interactions between neurons and glia during nervous system development and is also involved in localization of potassium channels within differentiating axons. This gene encompasses almost 1.5% of chromosome 7 and is one of the largest genes in the human genome. It is directly bound and regulated by forkhead box protein P2, a transcription factor related to speech and language development.

## Stockage

**Stockage:**  
Stocker à -20°C. Stable pendant un an après l'expédition.

**Tampon de stockage:**  
PBS avec azoture de sodium à 0,02 % et glycérol à 50 % pH 7,3

L'aliquotage n'est pas nécessaire pour le stockage à -20C

\*\*\* Les 20ul contiennent 0,1% de BSA.

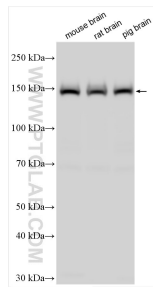
For technical support and original validation data for this product please contact:

T: 1 (888) 4PTGLAB (1-888-478-4522) (toll free in USA), or 1(312) 455-8498 (outside USA)

E: [proteintech@ptglab.com](mailto:proteintech@ptglab.com)  
W: [ptglab.com](http://ptglab.com)

This product is exclusively available under Proteintech Group brand and is not available to purchase from any other manufacturer.

## Données de validation sélectionnées



Various lysates were subjected to SDS PAGE followed by western blot with 25838-1-AP (Caspr2 antibody) at dilution of 1:2000 incubated at room temperature for 1.5 hours.