

À des fins de recherche uniquement

# Anticorps Polyclonal de lapin anti-c-Met (Cytoplasmic)



Numéro de catalogue: 25869-1-AP

Phare

39 Publications

## Informations de base

Numéro de catalogue:  
25869-1-AP

Taille:  
150ul, Concentration: 900 µg/ml by Nanodrop and 433 µg/ml by Bradford method using BSA as the standard;

Hôte:  
Lapin

Isotype:  
IgG

Immunogen Catalog Number:  
AG23140

Numéro d'acquisition GenBank:  
BC130420

Identification du gène (NCBI):  
4233

Nom complet:  
met proto-oncogene (hepatocyte growth factor receptor)

MW calculé  
1390 aa, 155 kDa

MW observés:  
145 kDa

Méthode de purification:  
Purification par affinité contre l'antigène

Dilutions recommandées:  
WB 1:200-1:1000  
IP 0.5-4.0 ug par IP and 1:200-1:1000 for WB  
IHC 1:500-1:2000

## Applications

Applications testées:  
FC (intra), IHC, IP, WB, ELISA

Demandes citées:  
IF, IHC, IP, WB

Spécificité de l'espèce:  
canin, Humain, rat, souris

Espèces citées:  
Humain, rat, souris

**Remarque-IHC: il est suggéré de démasquer l'antigène avec un tampon de TE buffer pH 9,0; (\*) A défaut, 'le démasquage de l'antigène peut être 'effectué avec un tampon citrate pH 6,0.**

Contrôles positifs:

WB : tissu hépatique de souris, cellules A431, cellules HepG2, cellules MDCK, tissu hépatique de rat

IP : cellules HeLa,

IHC : tissu de cancer du poumon humain, tissu de cancer du foie humain, tissu de cancer du sein humain, tissu de côlon humain

## Informations générales

c-Met (also named as MET or HGFR) is a receptor tyrosine kinase that transduces signals from the extracellular matrix into the cytoplasm by binding to HGF ligand. c-Met regulates many physiological processes including proliferation, scattering, morphogenesis and survival. The primary single chain precursor protein is post-translationally cleaved to produce the alpha and beta subunits, which are disulfide linked to form the mature receptor. Overexpression and/or mutation of c-Met has been reported in various human malignancies, including lung cancer, breast cancer, head and neck cancer, gastric cancer, colorectal cancer, bladder cancer, uterine cervix carcinoma, and esophageal carcinoma, c-Met could serve as an important therapeutic target (PMID: 26036285). The c-met receptor is a 190-kD glycoprotein consisting of a 145-kD membrane-spanning beta chain and a 50-kD alpha chain (PMID: 7806559). In Western blot, this antibody produces bands of unknown identity at 55 and 100 kDa.

## Publications notables

| Autrice        | Pubmed ID | Journal               | Application |
|----------------|-----------|-----------------------|-------------|
| Dali Zhao      | 34555268  | FEBS Open Bio         | WB          |
| Guichuan Huang | 36211385  | Front Immunol         | WB          |
| Enliang Li     | 34479614  | J Exp Clin Cancer Res | WB,IHC      |

## Stockage

Stockage:

Stocker à -20°C. Stable pendant un an après l'expédition.

Tampon de stockage:

PBS avec azoture de sodium à 0,02 % et glycérol à 50 % pH 7,3

L'aliquotage n'est pas nécessaire pour le stockage à -20C

\*\*\* Les 20ul contiennent 0,1% de BSA.

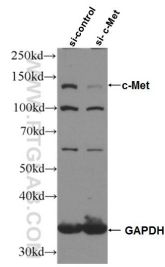
For technical support and original validation data for this product please contact:

T: 1 (888) 4PTGLAB (1-888-478-4522) (toll free in USA), or 1(312) 455-8498 (outside USA)

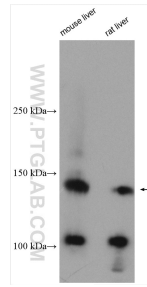
E: proteintech@ptglab.com  
W: ptglab.com

This product is exclusively available under Proteintech Group brand and is not available to purchase from any other manufacturer.

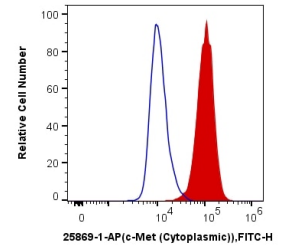
## Données de validation sélectionnées



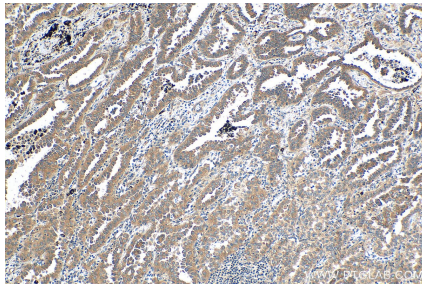
WB result of c-Met antibody (25869-1-AP; 1:5000; incubated at room temperature for 1.5 hours) with sh-Control and sh-c-Met transfected HepG2 cells.



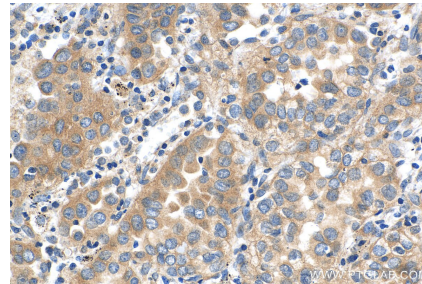
Various lysates were subjected to SDS PAGE followed by western blot with 25869-1-AP (c-Met (Cytoplasmic) antibody) at dilution of 1:300 incubated at room temperature for 1.5 hours.



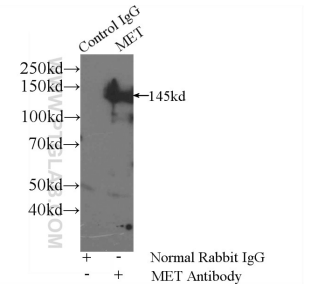
1X10<sup>6</sup> HeLa cells were intracellularly stained with 0.4 ug Anti-Human c-Met (Cytoplasmic) (25869-1-AP) and CoraLite@488-Conjugated AffiniPure Goat Anti-Rabbit IgG(H+L) at dilution 1:1000 (red), or 0.4 ug Control Antibody. Cells were fixed with 4% PFA and permeabilized with Flow Cytometry Perm Buffer (PF00011-C).



Immunohistochemical analysis of paraffin-embedded human lung cancer tissue slide using 25869-1-AP (c-Met (Cytoplasmic) antibody) at dilution of 1:1000 (under 10x lens). Heat mediated antigen retrieval with Tris-EDTA buffer (pH 9.0).



Immunohistochemical analysis of paraffin-embedded human lung cancer tissue slide using 25869-1-AP (c-Met (Cytoplasmic) antibody) at dilution of 1:1000 (under 40x lens). Heat mediated antigen retrieval with Tris-EDTA buffer (pH 9.0).



IP Result of anti-c-Met (Cytoplasmic) (IP:25869-1-AP, 5ug; Detection:25869-1-AP 1:300) with HeLa cells lysate 1600ug.