

À des fins de recherche uniquement

# Anticorps Polyclonal de lapin anti-PR



Numéro de catalogue: 25871-1-AP

16 Publications

## Informations de base

|   |   |  |
|---|---|--|
| <b>Numéro de catalogue:</b><br>25871-1-AP                       | <b>Numéro d'acquisition GenBank:</b><br>NM_000926 | <b>Méthode de purification:</b><br>Purification par affinité contre l'antigène |
| <b>Taille:</b><br>150ul , Concentration: 900 µg/ml by Nanodrop; | <b>Identification du gène (NCBI):</b><br>5241     | <b>Dilutions recommandées:</b><br>IHC 1:50-1:500<br>IF 1:50-1:500              |
| <b>Hôte:</b><br>Lapin   | <b>Nom complet:</b><br>progesterone receptor      |  |
| <b>Isotype:</b><br>IgG  | <b>MW calculé:</b><br>933 aa, 99 kDa              |  |
| <b>Immunogen Catalog Number:</b><br>AG22986                     | <b>MW observés:</b><br>80 kDa, 110-115 kDa        |  |

## Applications

### Applications testées:

IF, IHC, ELISA

### Demandes citées:

IF, IHC, WB

### Spécificité de l'espèce:

Humain, souris

### Espèces citées:

Chèvre, Humain, rat, souris

**Remarque-IHC: il est suggéré de démasquer l'antigène avec un tampon de TE buffer pH 9,0; (\*) À défaut, 'le démasquage de l'antigène peut être effectué avec un tampon citrate pH 6,0.**

### Contrôles positifs:

IHC : tissu de cancer du sein humain, tissu de tumeur ovarienne humain

IF : cellules T-47D,

## Informations générales

PGR, also named as NR3C3 and PR, belongs to the nuclear hormone receptor family and NR3 subfamily. The steroid hormones and their receptors are involved in the regulation of eukaryotic gene expression and affect cellular proliferation and differentiation in target tissues. Progesterone receptor isoform B (PRB) is involved activation of c-SRC/MAPK signaling on hormone stimulation. The ER and PR status has been used as a predictor of breast carcinoma responsiveness to endocrine therapy and as a prognostic indicator for early recurrence.

## Publications notables

| Autrice                      | Pubmed ID | Journal                 | Application |
|------------------------------|-----------|-------------------------|-------------|
| Jumin Park                   | 34551427  | Nucleic Acids Res       | IF, WB      |
| Guanying Feng                | 32873626  | Mol Cancer Res          | WB          |
| Christopher Khayeka-Wandabwa | 34725776  | Breast Cancer Res Treat | IHC         |

## Stockage

### Stockage:

Stocker à -20°C. Stable pendant un an après l'expédition.

### Tampon de stockage:

PBS avec azoture de sodium à 0,02 % et glycérol à 50 % pH 7,3

L'aliquotage n'est pas nécessaire pour le stockage à -20C

**\*\*\* Les 20ul contiennent 0,1% de BSA.**

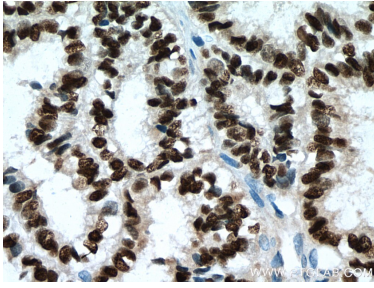
For technical support and original validation data for this product please contact:

T: 1 (888) 4PTGLAB (1-888-478-4522) (toll free in USA), or 1(312) 455-8498 (outside USA)

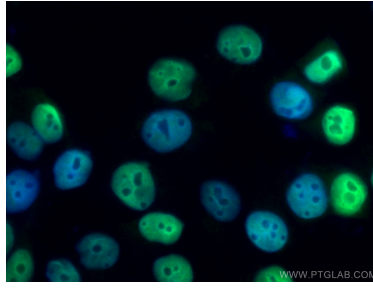
E: [proteintech@ptglab.com](mailto:proteintech@ptglab.com)  
W: [ptglab.com](http://ptglab.com)

**This product is exclusively available under Proteintech Group brand and is not available to purchase from any other manufacturer.**

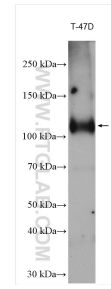
## Données de validation sélectionnées



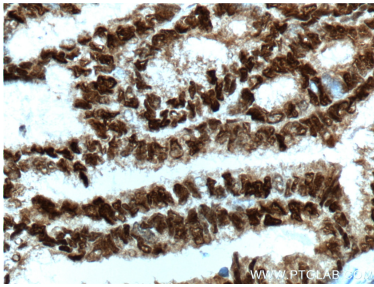
Immunohistochemical analysis of paraffin-embedded human ovary tumor tissue slide using 25871-1-AP (PR antibody) at dilution of 1:200 (under 40x lens). Heat mediated antigen retrieval with Tris-EDTA buffer (pH 9.0).



Immunofluorescent analysis of (4% PFA) fixed T-47D cells using PR antibody (25871-1-AP) at dilution of 1:200 and CoraLite®488-Conjugated AffiniPure Goat Anti-Rabbit IgG(H+L).



T-47D cells were subjected to SDS PAGE followed by western blot with 25871-1-AP (PR antibody) at dilution of 1:20000 incubated at room temperature for 1.5 hours.



Immunohistochemical analysis of paraffin-embedded human breast cancer tissue slide using 25871-1-AP (PR Antibody) at dilution of 1:300 (under 40x lens). Heat mediated antigen retrieval with Tris-EDTA buffer (pH 9.0).