

À des fins de recherche uniquement

# Anticorps Polyclonal de lapin anti-KIF5C



Numéro de catalogue: 25897-1-AP

6 Publications

## Informations de base

Numéro de catalogue:

25897-1-AP

Numéro d'acquisition GenBank:

BC110287

Méthode de purification:

Purification par affinité contre l'antigène

Taille:

150ul, Concentration: 1500 µg/ml by Nanodrop and 787 µg/ml by Bradford method using BSA as the standard;

Identification du gène (NCBI):

3800  
Nom complet:  
kinesin family member 5C

Dilutions recommandées:

WB 1:1000-1:8000  
IP 0.5-4.0 ug for IP and 1:500-1:1000 for WB  
IHC 1:50-1:500  
IF 1:10-1:100

Hôte:

Lapin

MW calculé

725 aa, 83 kDa

Isotype:

IgG

MW observés:

70 kDa, 110 kDa

Immunogen Catalog Number:

AG23163

## Applications

Applications testées:

IF, IHC, IP, WB, ELISA

Contrôles positifs:

WB : tissu cérébral de souris, tissu cérébral de rat

Demandes citées:

IHC, WB

IP : tissu cérébral de souris,

Spécificité de l'espèce:

Humain, rat, souris

IHC : tissu cérébral de souris,

Espèces citées:

Humain, souris

IF : cellules SH-SY5Y,

**Remarque-IHC: il est suggéré de démasquer l'antigène avec un tampon de TE buffer pH 9,0; (\*) A défaut, 'le démasquage de l'antigène peut être effectué avec un tampon citrate pH 6,0.**

## Informations générales

KIF5C (Kinesin heavy chain isoform 5C variant) which belongs to the kinesin-like protein family is neuron specific. The kinesin-1 subfamilies (kif5a, kif5b, kif5c) are responsible for the movement of mitochondria in neurons. Kinesins have N-terminal motor domains and C-terminal cargo-binding tail domains separated by hinge regions. The hinge and C-terminal tail regions of Kif5a, Kif5b, and Kif5c bound a large detergent-resistant RNase-sensitive granule. The granule localized to dendrites and underwent bidirectional movement. Distally directed movement of the granule was enhanced by Kif5 overexpression and reduced by Kif5 functional blockage. kinesins may transport RNA in dendrites via this large granule. Two major isoforms of kif5c, with molecular predicted masses of 80 and 110 kDa, are generated by alternative splicing.

## Publications notables

| Autrice        | Pubmed ID | Journal             | Application |
|----------------|-----------|---------------------|-------------|
| Tien-Chun Yang | 32277753  | Hum Mol Genet       | WB          |
| Qi Wang        | 30923004  | Neurobiol Dis       | WB          |
| Xu-Qiao Chen   | 33691783  | Alzheimers Res Ther | WB          |

## Stockage

Stockage:

Stocker à -20°C. Stable pendant un an après l'expédition.

Tampon de stockage:

PBS avec azoture de sodium à 0,02 % et glycérol à 50 % pH 7,3

L'aliquotage n'est pas nécessaire pour le stockage à -20C

\*\*\* Les 20ul contiennent 0,1% de BSA.

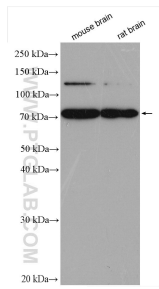
For technical support and original validation data for this product please contact:

T: 1 (888) 4PTGLAB (1-888-478-4522) (toll free in USA), or 1(312) 455-8498 (outside USA)

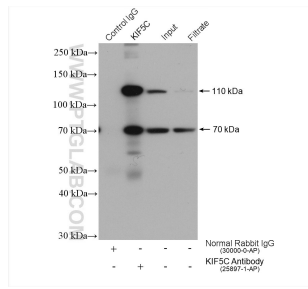
E: proteintech@ptglab.com  
W: ptglab.com

This product is exclusively available under Proteintech Group brand and is not available to purchase from any other manufacturer.

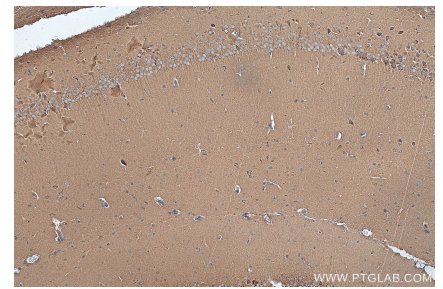
## Données de validation sélectionnées



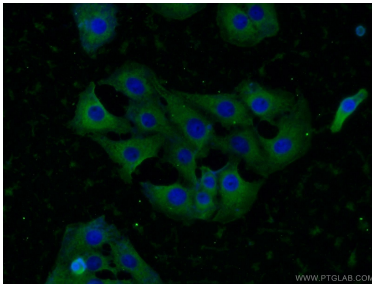
mouse brain tissue were subjected to SDS PAGE followed by western blot with 25897-1-AP (KIF5C antibody) at dilution of 1:4000 incubated at room temperature for 1.5 hours.



IP result of anti-KIF5C (IP:25897-1-AP, 4ug; Detection:25897-1-AP 1:800) with mouse brain tissue lysate 2080 ug.



Immunohistochemical analysis of paraffin-embedded mouse brain tissue slide using 25897-1-AP (KIF5C antibody) at dilution of 1:200 (under 10x lens). Heat mediated antigen retrieval with Tris-EDTA buffer (pH 9.0).



Immunofluorescent analysis of SH-SY5Y cells using 25897-1-AP (KIF5C antibody) at dilution of 1:25 and Alexa Fluor 488-conjugated AffiniPure Goat Anti-Rabbit IgG(H+L).