

À des fins de recherche uniquement

# Anticorps Polyclonal de lapin anti-JPH1



Numéro de catalogue: 25979-1-AP

## Informations de base

<b>Numéro de catalogue:</b> 25979-1-AP	<b>Numéro d'acquisition GenBank:</b> BC140875	<b>Méthode de purification:</b> Purification par affinité contre l'antigène
<b>Taille:</b> 150ul, Concentration: 750 µg/ml by Nanodrop and 427 µg/ml by Bradford method using BSA as the standard;	<b>Identification du gène (NCBI):</b> 56704	<b>Dilutions recommandées:</b> WB 1:1000-1:4000 IHC 1:50-1:500
<b>Hôte:</b> Lapin	<b>Nom complet:</b> junctophilin 1	
<b>Isotype:</b> IgG	<b>MW calculé:</b> 72 kDa	
<b>Immunogen Catalog Number:</b> AG23270	<b>MW observés:</b> 72 kDa	

## Applications

### Applications testées:

IHC, WB, ELISA

### Spécificité de l'espèce:

Humain, rat, souris

**Remarque-IHC: il est suggéré de démasquer l'antigène avec un tampon de TE buffer pH 9,0; (\*) À défaut, le démasquage de l'antigène peut être effectué avec un tampon citrate pH 6,0.**

### Contrôles positifs:

WB : cellules HEK-293, tissu cardiaque de rat, tissu cardiaque de souris

IHC : tissu de muscle squelettique humain, tissu cutané humain

## Informations générales

Junctophilin-1 is a protein that in humans is encoded by the JPH1 gene. This gene is a member of the junctophilin gene family. Junctional complexes between the plasma membrane and endoplasmic/sarcoplasmic reticulum are a common feature of all excitable cell types and mediate cross talk between cell surface and intracellular ion channels. The protein encoded by this gene is a component of junctional complexes and is composed of a C-terminal hydrophobic segment spanning the endoplasmic/sarcoplasmic reticulum membrane and a remaining cytoplasmic domain that shows specific affinity for the plasma membrane.

## Stockage

### Stockage:

Stocker à -20°C. Stable pendant un an après l'expédition.

### Tampon de stockage:

PBS avec azoture de sodium à 0,02 % et glycérol à 50 % pH 7,3

L'aliquotage n'est pas nécessaire pour le stockage à -20C

\*\*\* Les 20ul contiennent 0,1% de BSA.

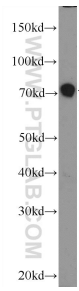
For technical support and original validation data for this product please contact:

T: 1 (888) 4PTGLAB (1-888-478-4522) (toll free in USA), or 1(312) 455-8498 (outside USA)

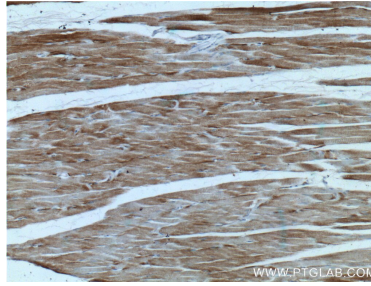
E: proteintech@ptglab.com  
W: ptglab.com

This product is exclusively available under Proteintech Group brand and is not available to purchase from any other manufacturer.

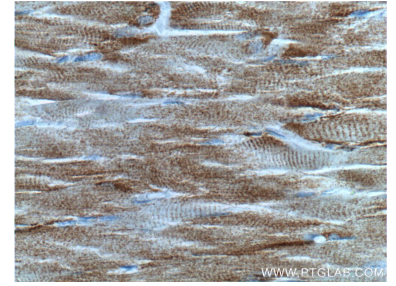
## Données de validation sélectionnées



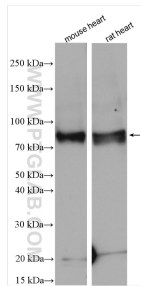
HEK-293 cells were subjected to SDS PAGE followed by western blot with 25979-1-AP (JPH1 Antibody) at dilution of 1:2000 incubated at room temperature for 1.5 hours.



Immunohistochemical analysis of paraffin-embedded human skeletal muscle tissue slide using 25979-1-AP (JPH1 antibody) at dilution of 1:200 (under 10x lens).



Immunohistochemical analysis of paraffin-embedded human skeletal muscle tissue slide using 25979-1-AP (JPH1 antibody) at dilution of 1:200 (under 40x lens).



Various lysates were subjected to SDS PAGE followed by western blot with 25979-1-AP (JPH1 antibody) at dilution of 1:1000 incubated at room temperature for 1.5 hours.