

À des fins de recherche uniquement

Anticorps Polyclonal de lapin anti-RSF1



Numéro de catalogue: 26011-1-AP **Phare**

Informations de base

Numéro de catalogue: 26011-1-AP	Numéro d'acquisition GenBank: BC153210	Méthode de purification: Purification par affinité contre l'antigène
Taille: 150ul , Concentration: 850 µg/ml by Nanodrop and 280 µg/ml by Bradford method using BSA as the standard;	Identification du gène (NCBI): 51773	Dilutions recommandées: WB 1:1000-1:4000
Hôte: Lapin	Nom complet: remodeling and spacing factor 1	
Isotype: IgG	MW calculé 1441 aa, 164 kDa	
Immunogen Catalog Number: AG22456	MW observés: 250 kDa	

Applications

Applications testées: WB, ELISA	Contrôles positifs: WB : cellules COLO 320, cellules HEK-293, cellules HeLa, cellules U-251
Spécificité de l'espèce: Humain	

Informations générales

RSF1, remodelling and spacing factor 1, is an important interphase centromere protein and is overexpressed in many types of cancers and correlated with poor overall survival. RSF1 has functions mainly in maintaining chromosome stability, facilitating DNA repair, maintaining the protein homeostasis of RSF1 and suppressing the transcription of some oncogenes when RSF1 protein is expressed at an optimal level; however, RSF1 overexpression facilitates drug resistance and cell cycle checkpoint inhibition to prompt cancer proliferation and survival. The RSF1 expression level and gene background are crucial for RSF1 functions, which may explain why RSF1 has different functions in different cancer types. The calculated molecular weight of RSF1 is 163 kDa, but 26011-1-AP can detect a band around 250 kDa, we validated the specificity by knock down. (PMID: 34147108)

Stockage

Stockage:
Stocker à -20°C. Stable pendant un an après l'expédition.
Tampon de stockage:
PBS avec azoture de sodium à 0,02 % et glycérol à 50 % pH 7,3
L'aliquotage n'est pas nécessaire pour le stockage à -20C

***** Les 20ul contiennent 0,1% de BSA.**

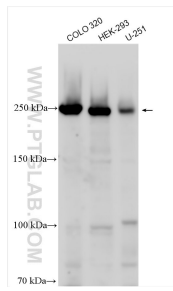
For technical support and original validation data for this product please contact:

T: 1 (888) 4PTGLAB (1-888-478-4522) (toll free in USA), or 1(312) 455-8498 (outside USA)

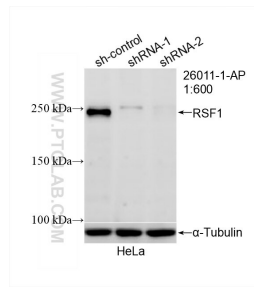
E: proteintech@ptglab.com
W: ptglab.com

This product is exclusively available under Proteintech Group brand and is not available to purchase from any other manufacturer.

Données de validation sélectionnées



Various lysates were subjected to SDS PAGE followed by western blot with 26011-1-AP (RSF1 antibody) at dilution of 1:2000 incubated at room temperature for 1.5 hours.



WB result of RSF1 antibody (26011-1-AP; 1:600; incubated at room temperature for 1.5 hours) with sh-Control and sh-RSF1 transfected HeLa cells.