

À des fins de recherche uniquement

Anticorps Polyclonal de lapin anti-C20orf20



Numéro de catalogue: 26040-1-AP

Phare

1 Publications

Informations de base

Numéro de catalogue:

26040-1-AP

Taille:

150ul, Concentration: 500 µg/ml by Nanodrop and 287 µg/ml by Bradford method using BSA as the standard;

Hôte:

Lapin

Isotype:

IgG

Immunogen Catalog Number:

AG22840

Numéro d'acquisition GenBank:

BC014235

Identification du gène (NCBI):

55257

Nom complet:

chromosome 20 open reading frame 20

MW calculé

204 aa, 22 kDa

MW observés:

30 kDa

Méthode de purification:

Purification par affinité contre l'antigène

Dilutions recommandées:

WB 1:500-1:1000

IP 0.5-4.0 ug for IP and 1:200-1:1000 for WB

IHC 1:50-1:500

IF 1:50-1:500

Applications

Applications testées:

IF, IHC, IP, WB, ELISA

Demandes citées:

WB

Spécificité de l'espèce:

Humain, souris

Espèces citées:

Humain

Remarque-IHC: il est suggéré de démasquer l'antigène avec un tampon de TE buffer pH 9,0; (*) À défaut, le démasquage de l'antigène peut être effectué avec un tampon citrate pH 6,0.

Contrôles positifs:

WB : cellules HepG2, tissu testiculaire de souris

IP : cellules HepG2,

IHC : tissu de cancer du côlon humain,

IF : cellules HepG2,

Informations générales

C20orf20, also named as MRG/MORF4L-binding protein or Up-regulated in colon cancer 4 (Urc4), is a 204 amino acid protein, which belongs to the EAF7 family. C20orf20 localizes in the nucleus and is a Component of the NuA4 histone acetyltransferase (HAT) complex which is involved in transcriptional activation of select genes principally by acetylation of nucleosomal histones H4 and H2A. This modification may both alter nucleosome - DNA interactions and promote interaction of the modified histones with other proteins which positively regulate transcription. This complex may be required for the activation of transcriptional programs associated with oncogene and proto-oncogene mediated growth induction, tumor suppressor mediated growth arrest and replicative senescence, apoptosis, and DNA repair. C20orf20 is modified through phosphorylation and acetylation, so the molecular weight of C20orf20 might be 25-30 kDa.

Publications notables

Autrice	Pubmed ID	Journal	Application
Saya Ito	30076933	Biochim Biophys Acta	WB

Stockage

Stockage:

Stocker à -20°C. Stable pendant un an après l'expédition.

Tampon de stockage:

PBS avec azoture de sodium à 0,02 % et glycérol à 50 % pH 7,3

L'aliquotage n'est pas nécessaire pour le stockage à -20C

*** Les 20ul contiennent 0,1% de BSA.

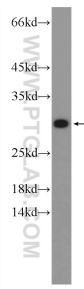
For technical support and original validation data for this product please contact:

T: 1 (888) 4PTGLAB (1-888-478-4522) (toll free in USA), or 1(312) 455-8498 (outside USA)

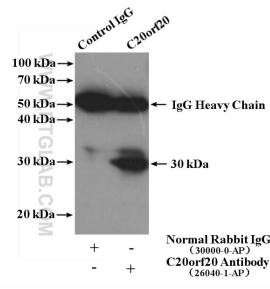
E: proteintech@ptglab.com
W: ptglab.com

This product is exclusively available under Proteintech Group brand and is not available to purchase from any other manufacturer.

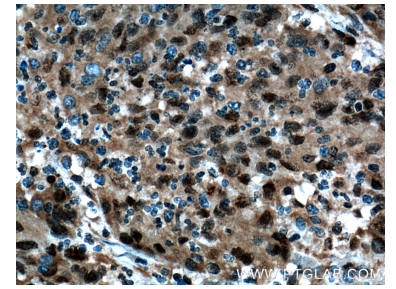
Données de validation sélectionnées



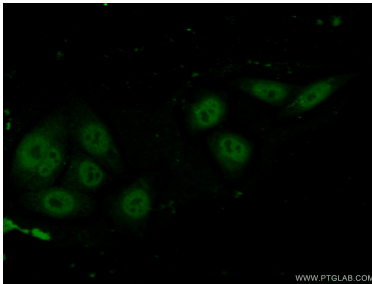
HepG2 cells were subjected to SDS PAGE followed by western blot with 26040-1-AP (C20orf20 Antibody) at dilution of 1:600 incubated at room temperature for 1.5 hours.



IP Result of anti-C20orf20 (IP:26040-1-AP, 4ug; Detection:26040-1-AP 1:300) with HepG2 cells lysate 2640ug.



Immunohistochemical analysis of paraffin-embedded human colon cancer tissue slide using 26040-1-AP (C20orf20 Antibody) at dilution of 1:200 (under 40x lens). Heat mediated antigen retrieval with Tris-EDTA buffer (pH 9.0).



Immunofluorescent analysis of (10% Formaldehyde) fixed HepG2 cells using 26040-1-AP (C20orf20 antibody) at dilution of 1:50 and Alexa Fluor 488-conjugated AffiniPure Goat Anti-Rabbit IgG(H+L).