

À des fins de recherche uniquement

Anticorps Polyclonal de lapin anti-PEDF



Numéro de catalogue: 26045-1-AP

3 Publications

Informations de base

Numéro de catalogue: 26045-1-AP	Numéro d'acquisition GenBank: BC013984	Méthode de purification: Purification par affinité contre l'antigène
Taille: 150ul , Concentration: 350 µg/ml by Nanodrop and 233 µg/ml by Bradford method using BSA as the standard;	Identification du gène (NCBI): 5176	Dilutions recommandées: WB 1:500-1:2000
Hôte: Lapin	Nom complet: serpin peptidase inhibitor, clade F (alpha-2 antiplasmin, pigment epithelium derived factor), member 1	
Isotype: IgG	MW calculé 418 aa, 46 kDa	
Immunogen Catalog Number: AG23296	MW observés: 46 kDa	

Applications

Applications testées: WB, ELISA	Contrôles positifs: WB : cellules A375, human serum
Demandes citées: IF, WB	
Spécificité de l'espèce: Humain	
Espèces citées: Humain	

Informations générales

PEDF also known as serpin F1 (SERPINF1), is a multifunctional secreted protein that has anti-angiogenic, anti-tumorigenic, and neurotrophic functions. It is an approximately 50-kDa secreted protein that is widely expressed, including by osteoblasts and osteoclasts. PEDF is also one of the most abundant secretory products of adipocytes, and circulating concentrations of PEDF correlate positively with body fat mass and INS resistance. PEDF is a neurotrophic factor involved in neuronal differentiation in retinoblastoma cells. Mutations in this gene were found in individuals with osteogenesis imperfecta, type VI.

Publications notables

Autrice	Pubmed ID	Journal	Application
Xiaoyan Fu	31113934	Cell Death Dis	WB
Hao Zhang	34278806	Hum Gene Ther	WB
Lele Li	37070131	J Cell Mol Med	WB,IF

Stockage

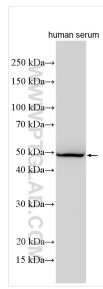
Stockage:
Stocker à -20°C. Stable pendant un an après l'expédition.
Tampon de stockage:
PBS avec azoture de sodium à 0,02 % et glycérol à 50 % pH 7,3
L'aliquotage n'est pas nécessaire pour le stockage à -20C

*** Les 20ul contiennent 0,1% de BSA.

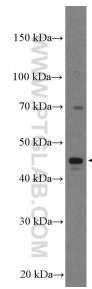
For technical support and original validation data for this product please contact:
T: 1 (888) 4PTGLAB (1-888-478-4522) (toll free in USA), or 1(312) 455-8498 (outside USA)
E: proteintech@ptglab.com
W: ptglab.com

This product is exclusively available under Proteintech Group brand and is not available to purchase from any other manufacturer.

Données de validation sélectionnées



human serum were subjected to SDS PAGE followed by western blot with 26045-1-AP (PEDF antibody) at dilution of 1:1000 incubated at room temperature for 1.5 hours.



A375 cells were subjected to SDS PAGE followed by western blot with 26045-1-AP (PEDF antibody) at dilution of 1:1000 incubated at room temperature for 1.5 hours.