

À des fins de recherche uniquement

Anticorps Polyclonal de lapin anti-IL-1 beta



Numéro de catalogue: 26048-1-AP

58 Publications

Informations de base

Numéro de catalogue: 26048-1-AP	Numéro d'acquisition GenBank: NM_008361	Méthode de purification: Purification par affinité contre l'antigène
Taille: 150ul , Concentration: 850 µg/ml by Nanodrop;	Identification du gène (NCBI): 16176	Dilutions recommandées: WB 1:1000-1:6000
Hôte: Lapin	Nom complet: interleukin 1 beta	
Isotype: IgG	MW calculé: 31 kDa	
Immunogen Catalog Number: AG23461	MW observés: 31 kDa	

Applications

Applications testées: FC, WB, ELISA	Contrôles positifs: WB : cellules RAW 264.7,
Demandes citées: ELISA, IF, IHC, WB	
Spécificité de l'espèce: souris	
Espèces citées: Humain, rat, souris	

Informations générales

Interleukin-1, produced mainly by blood monocytes, mediates the panoply of host reactions collectively known as acute phase response. It is identical to endogenous pyrogen. The multiple biologic activities that define IL1 are properties of a 15- to 18-kD protein that is derived from a 30- to 35-kD precursor. Interleukin 1 β (IL-1B) is a member of the interleukin 1 cytokine family. It is a pro-inflammatory cytokine against infection, playing an important role in the pathogenesis of cancers. It signals through various adaptor proteins and kinases that lead to activation of numerous downstream targets.

Publications notables

Autrice	Pubmed ID	Journal	Application
Tung-Sheng Chen	36116531	Life Sci	IHC
Liang Wang	34594215	Front Pharmacol	ELISA
Meng-Ting Zhang	28843150	Biomed Pharmacother	WB

Stockage

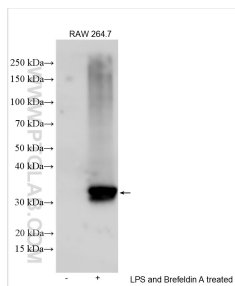
Stockage:
Stocker à -20°C. Stable pendant un an après l'expédition.
Tampon de stockage:
PBS avec azoture de sodium à 0,02 % et glycérol à 50 % pH 7,3
L'aliquotage n'est pas nécessaire pour le stockage à -20C

*** Les 20ul contiennent 0,1% de BSA.

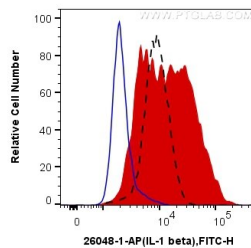
For technical support and original validation data for this product please contact:
T: 1 (888) 4PTGLAB (1-888-478-4522) (toll free in USA), or 1(312) 455-8498 (outside USA)
E: proteintech@ptglab.com
W: ptglab.com

This product is exclusively available under Proteintech Group brand and is not available to purchase from any other manufacturer.

Données de validation sélectionnées



LPS and Brefeldin A treated RAW 264.7 cells were subjected to SDS PAGE followed by western blot with 26048-1-AP (IL-1 beta antibody) at dilution of 1:3000 incubated at room temperature for 1.5 hours.



1×10^6 RAW 264.7 cells untreated (dashed lines) and LPS and Brefeldin A treated (red) were intracellularly stained with 0.4 ug Anti-Mouse IL-1 beta (26048-1-AP) and CoraLite®488-Conjugated AffiniPure Goat Anti-Rabbit IgG(H+L) at dilution 1:1000, or 0.4 ug Control Antibody (blue). Cells were fixed with 4% PFA and permeabilized with Flow Cytometry Perm Buffer (PF00011-C).